

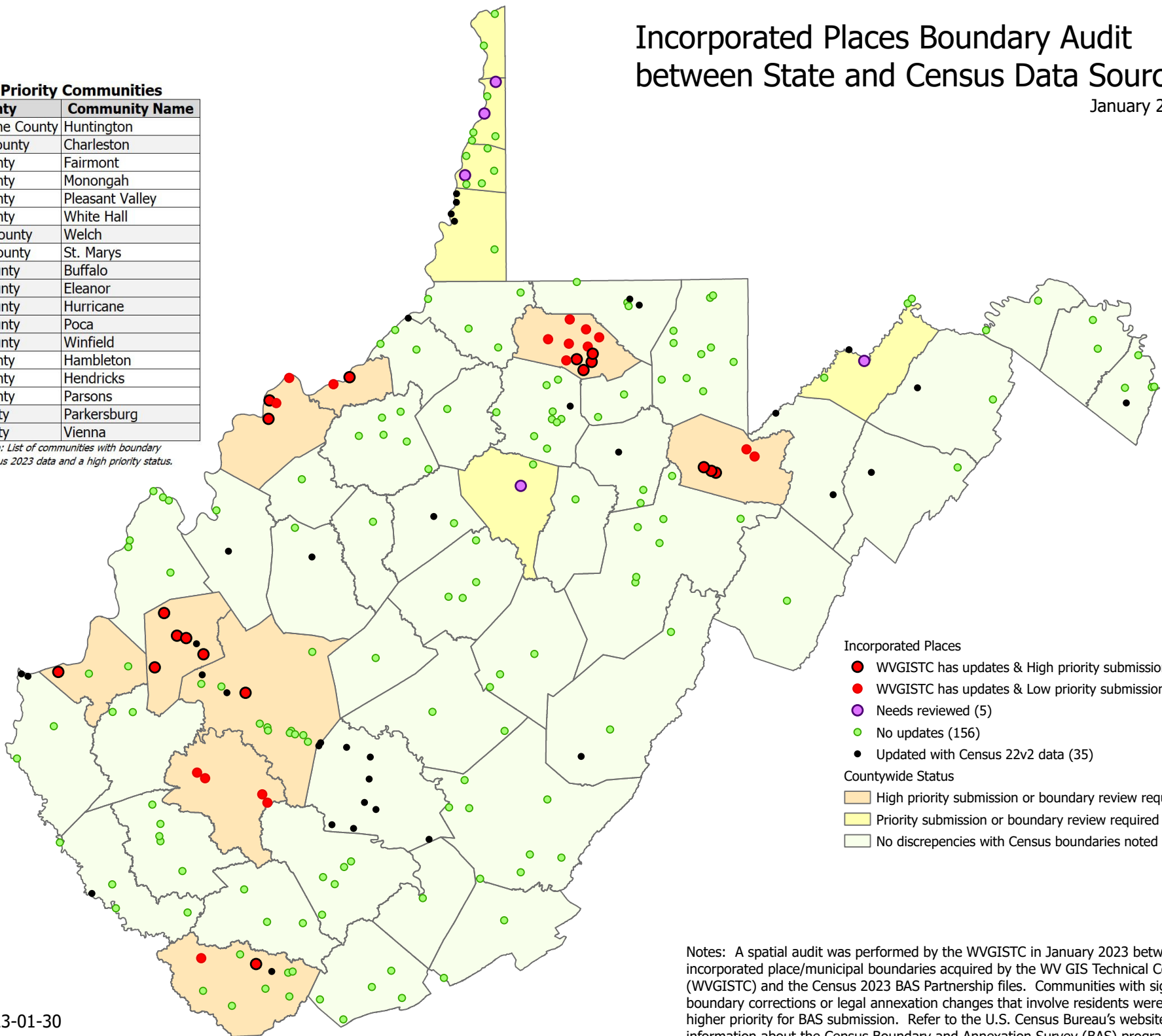
Incorporated Places Boundary Audit between State and Census Data Sources

January 2023

● High Priority Communities

County	Community Name
Cabell/Wayne County	Huntington
Kanawha County	Charleston
Marion County	Fairmont
Marion County	Monongah
Marion County	Pleasant Valley
Marion County	White Hall
McDowell County	Welch
Pleasants County	St. Marys
Putnam County	Buffalo
Putnam County	Eleanor
Putnam County	Hurricane
Putnam County	Poca
Putnam County	Winfield
Tucker County	Hambleton
Tucker County	Hendricks
Tucker County	Parsons
Wood County	Parkersburg
Wood County	Vienna

Table description: List of communities with boundary updates to Census 2023 data and a high priority status.



Incorporated Places

- WVGISTC has updates & High priority submission (18)
- WVGISTC has updates & Low priority submission (17)
- Needs reviewed (5)
- No updates (156)
- Updated with Census 22v2 data (35)

Countywide Status

- High priority submission or boundary review required
- Priority submission or boundary review required
- No discrepancies with Census boundaries noted

Notes: A spatial audit was performed by the WVGISTC in January 2023 between incorporated place/municipal boundaries acquired by the WV GIS Technical Center (WVGISTC) and the Census 2023 BAS Partnership files. Communities with significant boundary corrections or legal annexation changes that involve residents were marked a higher priority for BAS submission. Refer to the U.S. Census Bureau's website for more information about the Census Boundary and Annexation Survey (BAS) program.