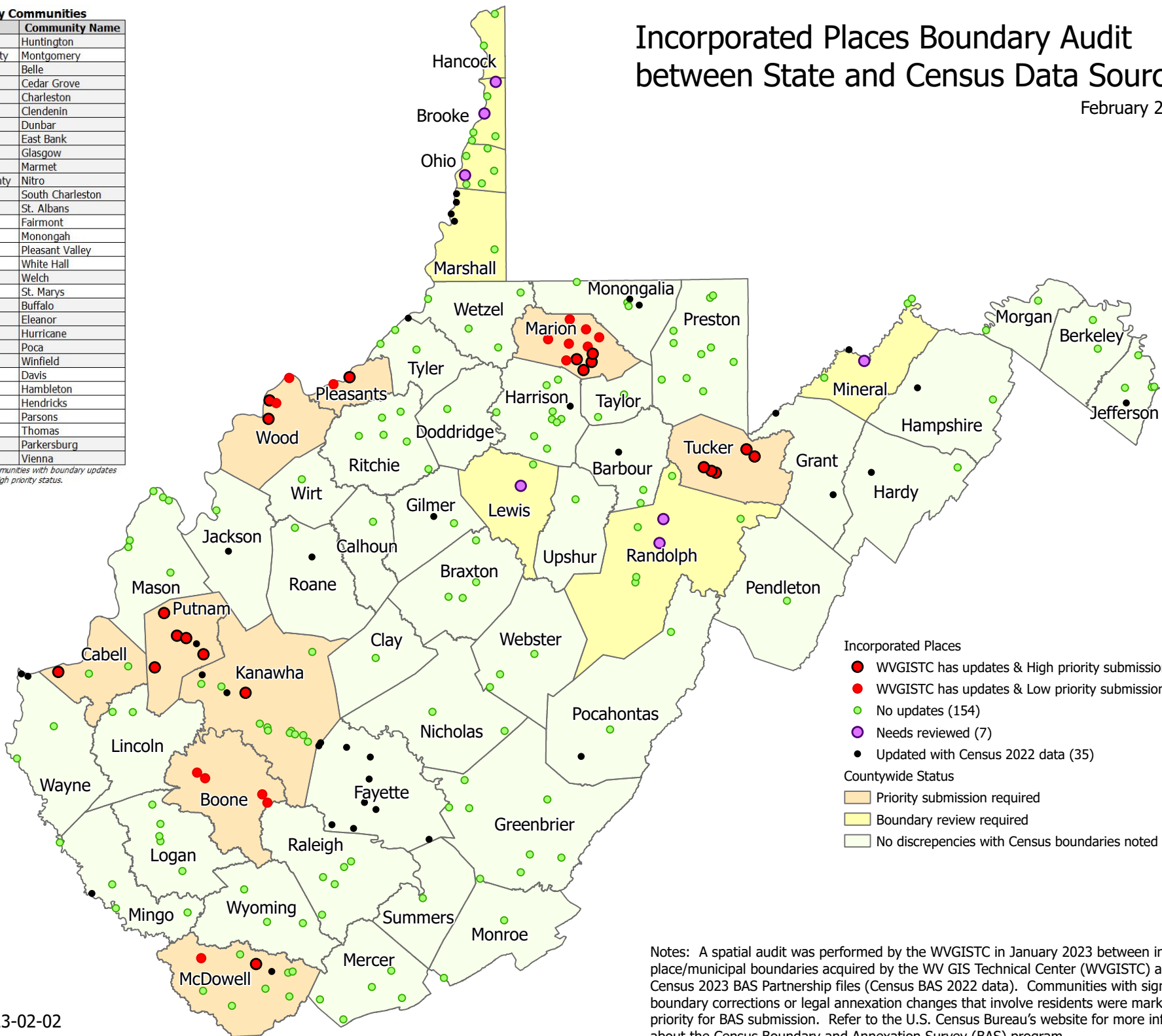


# Incorporated Places Boundary Audit between State and Census Data Sources

February 2023

| County                 | Community Name   |
|------------------------|------------------|
| Cabell/Wayne County    | Huntington       |
| Fayette/Kanawha County | Montgomery       |
| Kanawha County         | Belle            |
| Kanawha County         | Cedar Grove      |
| Kanawha County         | Charleston       |
| Kanawha County         | Clendenin        |
| Kanawha County         | Dunbar           |
| Kanawha County         | East Bank        |
| Kanawha County         | Glasgow          |
| Kanawha County         | Marmet           |
| Kanawha/Putnam County  | Nitro            |
| Kanawha County         | South Charleston |
| Kanawha County         | St. Albans       |
| Marion County          | Fairmont         |
| Marion County          | Monongah         |
| Marion County          | Pleasant Valley  |
| Marion County          | White Hall       |
| McDowell County        | Welch            |
| Pleasants County       | St. Marys        |
| Putnam County          | Buffalo          |
| Putnam County          | Eleanor          |
| Putnam County          | Hurricane        |
| Putnam County          | Poca             |
| Putnam County          | Winfield         |
| Tucker County          | Davis            |
| Tucker County          | Hambleton        |
| Tucker County          | Hendricks        |
| Tucker County          | Parsons          |
| Tucker County          | Thomas           |
| Wood County            | Parkersburg      |
| Wood County            | Vienna           |

Table description: List of communities with boundary updates to Census 2023 data and a high priority status.



**Incorporated Places**

- WVGISTC has updates & High priority submission (20)
- WVGISTC has updates & Low priority submission (15)
- No updates (154)
- Needs reviewed (7)
- Updated with Census 2022 data (35)

**Countywide Status**

- Priority submission required
- Boundary review required
- No discrepancies with Census boundaries noted

Notes: A spatial audit was performed by the WVGISTC in January 2023 between incorporated place/municipal boundaries acquired by the WV GIS Technical Center (WVGISTC) and the Census 2023 BAS Partnership files (Census BAS 2022 data). Communities with significant boundary corrections or legal annexation changes that involve residents were marked a higher priority for BAS submission. Refer to the U.S. Census Bureau's website for more information about the Census Boundary and Annexation Survey (BAS) program.