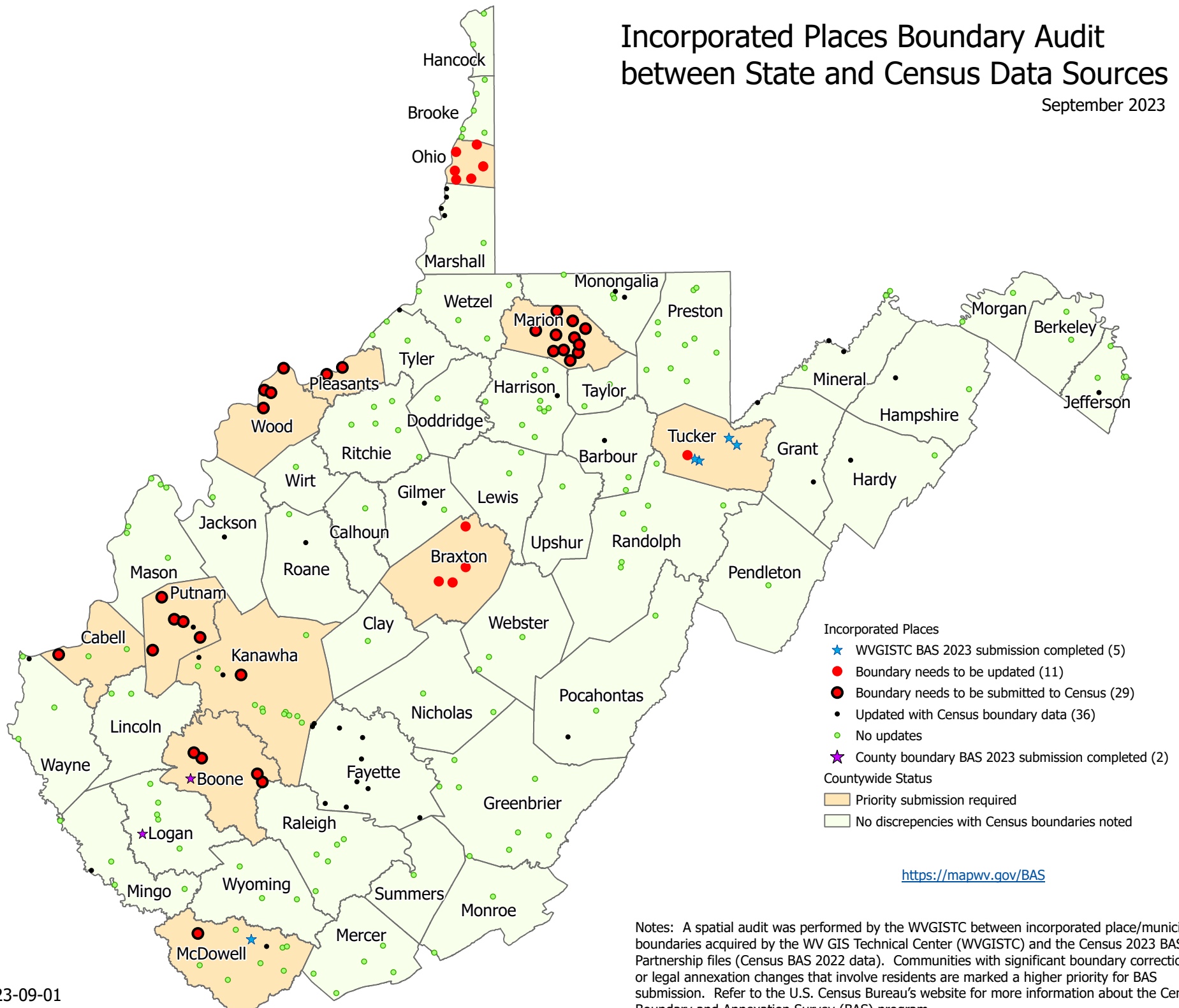


# Incorporated Places Boundary Audit between State and Census Data Sources

September 2023



Notes: A spatial audit was performed by the WVGISTC between incorporated place/municipal boundaries acquired by the WV GIS Technical Center (WVGISTC) and the Census 2023 BAS Partnership files (Census BAS 2022 data). Communities with significant boundary corrections or legal annexation changes that involve residents are marked a higher priority for BAS submission. Refer to the U.S. Census Bureau's website for more information about the Census Boundary and Annexation Survey (BAS) program.