

THRASHER

2019 Pocahontas County Aerial Triangulation And Ground Control Report

Prepared by:

Craig Fry, CP

The Thrasher Group

10125 Mason Dixon Highway

Burton, WV 26562

Phone: (304) 662-2626

cfry@thethrashergroup.com

The Thrasher Group (TTG) has successfully completed the aerial triangulation (AT) for the countywide spring flight.

Using semi-automatic analytical aerial triangulation procedures, TTG determined the exterior orientation parameters for each exposure in the photography that covers the project area.

The results of the final adjustments are sufficient to enable TTG to photogrammetrically produce orthophotos from the photography. The AT solution ensures that the project data will meet or exceed the accuracy expectation as outlined in the contract.

Ground Control

The ground control network was designed to provide a geometrically strong horizontal and vertical control system within the project area.

Sufficiently identified ground control points (GCPS) were surveyed within the block to provide horizontal and vertical control.

Aerial Photography

Aerial photography for the project was captured between April 1, 2019 and April 10, 2019.

The photography was acquired with an approximate 60 percent overlap and an approximate 30 percent side lap. The flight altitude of the photography was approximately 7,700 feet above mean terrain.

Airborne GPS

Airborne-GPS (ABGPS) data was captured during the acquisition of the aerial photography. An appropriate GPS antenna was mounted on each aircraft used on the project, and the relationship between the antenna phase centers and the camera perspective centers was then determined through close-range survey techniques. Dual frequency, geodetic quality receivers were utilized for the data collection.

The GPS data was post-processed, and the appropriate interpolations, transformations and reductions were applied to derive the camera's spatial position referenced to the World Geodetic System of 1984 (WGS84) at each instant of exposure.

Flight

The flight plan was comprised of 33 flight lines. The designed ground sample distance per pixel was 10 centimeters.

The block consisted of a total of 3,187 images.

A fully equipped aircraft was employed for the photographic mission. In the aircraft, the instrumentation utilized in the acquisition of aerial photography and ABGPS data comprised of a Zeiss DMC III aerial camera featuring forward motion compensation, and a GPS Novatel Span Receiver with a collection rate of one half-second.

During each flight, every exposure triggered by each camera was recorded in the associated GPS data file as an external event. A time stamp for each event later allowed the interpolation of the camera position at each instant or exposure.

Aerial Triangulation

Aerial triangulation is the simultaneous space resection of image rays projected and recorded at one source, the perspective center of the aerial camera. These image rays projected from two or more overlapping images (stereo-models) intersect at the corresponding ground location to determine the three-dimensional coordinates of each point measured. This collection of image rays is fit to known ground survey control in a simultaneous three-dimensional least squares adjustment. After the completion of this adjustment, coordinates of the 'unknown' ground points are derived by the intersection of the adjusted image points.

The aerial triangulation was performed utilizing the ground control and the airborne GPS-assisted techniques. These data are then introduced along with the reduced image coordinates, as observations, into a combined three-dimensional simultaneous least squares adjustment by bundles. This approach allows a substantial reduction in the amount of ground control required for the AT solutions.

The purpose of aerial triangulation is to densify horizontal and vertical control from relatively few ground control points (GCPs). Since obtaining GCPs is a relatively significant expense in any mapping project, AT procedures are used to reduce the amount of field survey required by extending control to all stereo-models.

Internal software checks were performed to detect gross errors in the photo measurements.

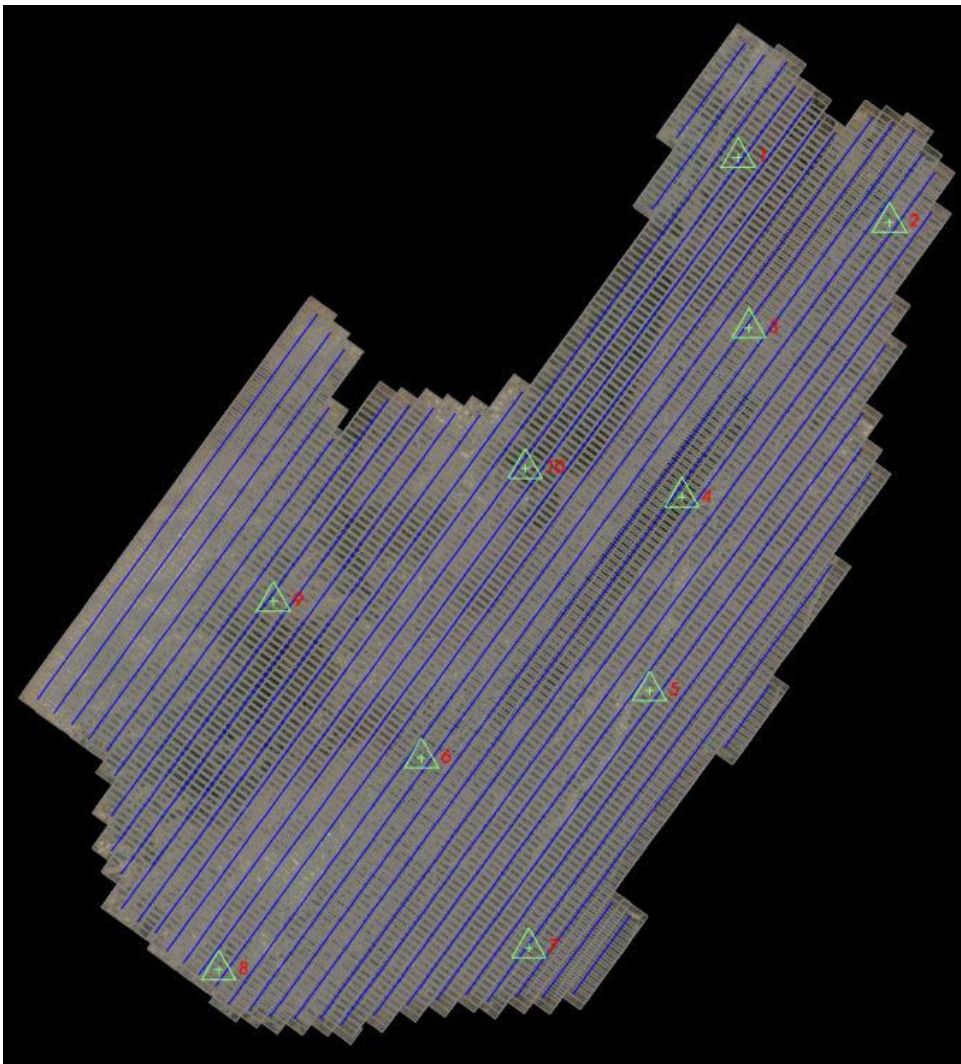
Bundle Adjustment

The surveyed control, along with the reduced image coordinates, served as input into the 'combined' block adjustment. Three-dimensional, simultaneous least squares adjustments by bundles, were undertaken using Match-AT bundle adjustment software. This bundle block adjustment software has proven to be a very rigorous and stable platform.

Ten control points were used to constrain the AT solution. The sigma naught is a significant indicator of the quality of the adjustment. The sigma value derived by the block adjustment is the root mean square of all photo measurement residuals for the entire block. The lower the sigma naught, the less tension within the AT solution. The sigma naught for this adjustment was 0.5 microns. The residuals of the control points from measured position to surveyed position are as follows:

Residual point x y z (ft.)

1	0.140	-0.108	0.375
2	-0.008	-0.024	-0.006
3	0.090	0.060	0.101
4	0.003	0.096	0.005
5	-0.038	-0.030	-0.072
6	-0.057	0.030	-0.085
7	-0.058	-0.039	-0.023
8	0.030	0.033	0.046
9	0.048	-0.086	0.026
10	0.231	-0.007	0.176



CONTROL POINT LOCATION SHEET

VERTICAL DATUM: GEOID 12B COORDINATE DATUM: NAD 83 (FT), WV SOUTH ZONE

ORDER OF ACCURACY: RTK GPS 1/100,000

YEAR: 2019

ADDRESS: POCAHONTAS COUNTY, WEST VIRGINIA – GERTRUDE, WV CO. RT. 44

ESTABLISHED BY: THE THRASHER GROUP

CHIEF OF PARTY: MARK GALLAGHER

1

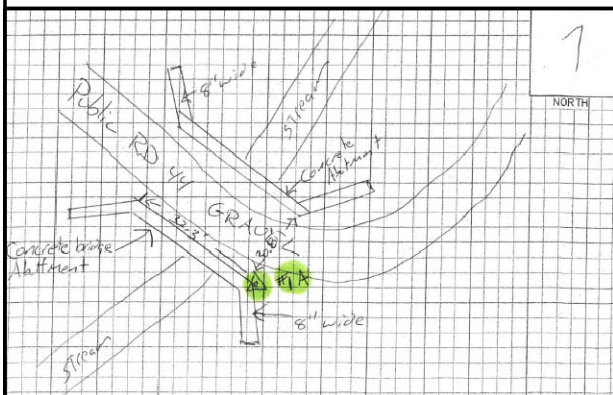
NORTHING (Y) = 609979.484

EASTING (X) = 2315104.957

ELEVATION (Z) = 3009.387

DETAILED DESCRIPTION:

NE CORNER OF SOUTH CONCRETE BRIDGE ABUTMENT ALONG CO. RT. 44, GETRUDE, WV; APPROX. 100' NE OF GERTRUDE RUN RD. AND CO. RT. 44 INTERSECTION.



CONTROL POINT LOCATION SHEET

VERTICAL DATUM: GEOID 12B COORDINATE DATUM: NAD 83 (FT), WV SOUTH ZONE

ORDER OF ACCURACY: RTK GPS 1/100,000

YEAR: 2019

ADDRESS: POCAHONTAS COUNTY, WEST VIRGINIA—NEAR THORNWOOD, WV JOHNSON RD

ESTABLISHED BY: THE THRASHER GROUP

CHIEF OF PARTY: BUD BARGY

2

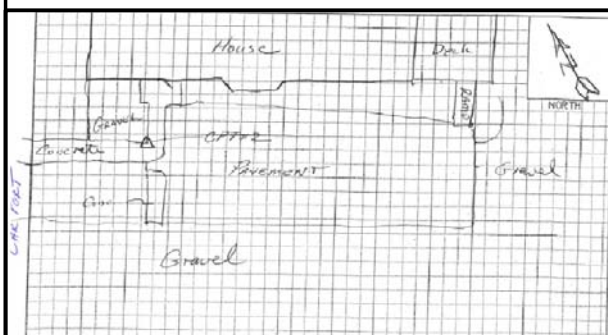
NORTHING (Y) = 592377.613

EASTING (X) = 2356302.116

ELEVATION (Z) = 3622.364

DETAILED DESCRIPTION:

NORTHERN INSIDE CORNER OF
CONCRETE SIDEWALK, SW OF
HOUSE AND SE OF CARPORT;
OFF OF JOHNSON ROAD.



CONTROL POINT LOCATION SHEET

VERTICAL DATUM: GEOID 12B COORDINATE DATUM: NAD 83 (FT), WV SOUTH ZONE

ORDER OF ACCURACY: RTK GPS 1/100,000

YEAR: 2019

ADDRESS: POCAHONTAS COUNTY, WEST VIRGINIA – BARTOW, WV; WV RT. 92

ESTABLISHED BY: THE THRASHER GROUP

CHIEF OF PARTY: BUD BARGY

3

NORTHING (Y) = 563542.054

EASTING (X) = 2318019.143

ELEVATION (Z) = 2778.08

DETAILED DESCRIPTION:

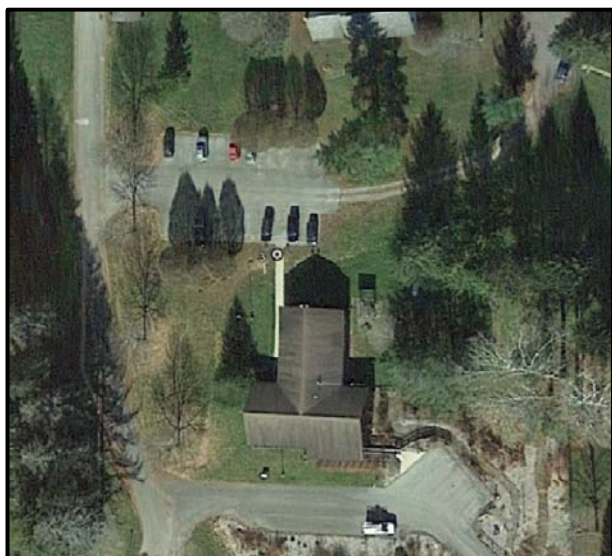
NW CORNER OF CONCRETE

SIDEWALK AT EDGE OF PAVED

PARKING LOT, OF DEPT. OF

FOREST SERVICE BUILDING, OFF

OF WV RT. 92.



CONTROL POINT LOCATION SHEET

VERTICAL DATUM: GEOID 12B COORDINATE DATUM: NAD 83 (FT), WV SOUTH ZONE

ORDER OF ACCURACY: RTK GPS 1/100,000

YEAR: 2019

ADDRESS: POCAHONTAS COUNTY, WEST VIRGINIA – GREEN BANK, WV, WV RT. 28

ESTABLISHED BY: THE THRASHER GROUP

CHIEF OF PARTY: BUD BARGY

4

NORTHING (Y) = 517495.944

EASTING (X) = 2299765.736

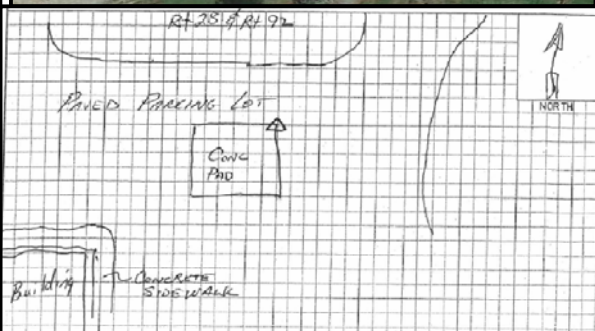
ELEVATION (Z) = 2597.347

DETAILED DESCRIPTION:

NE CORNER OF CONCRETE PAD

INSIDE OF PAVED PARKING LOT

FOR FIRE DEPT., ALONG POTOMAC
HIGHLANDS TRAIL (WV RT. 28).



CONTROL POINT LOCATION SHEET

VERTICAL DATUM: GEOID 12B COORDINATE DATUM: NAD 83 (FT), WV SOUTH ZONE

ORDER OF ACCURACY: RTK GPS 1/100,000

YEAR: 2019

ADDRESS: POCAHONTAS COUNTY, WEST VIRGINIA – FROST, WV; WV RT. 84

ESTABLISHED BY: THE THRASHER GROUP

CHIEF OF PARTY: BUD BARGY

5

NORTHING (Y) = 464744.681

EASTING (X) = 2290952.868

ELEVATION (Z) = 2597.882

DETAILED DESCRIPTION:

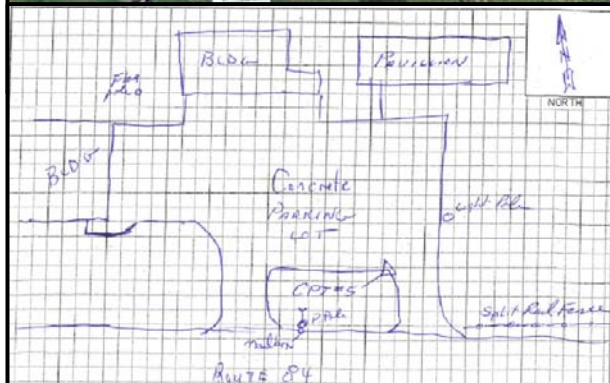
SE CORNER OF CONCRETE

PARKING AREA AND WEST SIDE

OF EASTERN ENTRANCE, AT

FROST FIRE DEPARTMENT; ALONG

WV RT. 84.



CONTROL POINT LOCATION SHEET

VERTICAL DATUM: GEOID 12B COORDINATE DATUM: NAD 83 (FT), WV SOUTH ZONE

ORDER OF ACCURACY: RTK GPS 1/100,000

YEAR: 2019

ADDRESS: POCAHONTAS COUNTY, WEST VIRGINIA—MARLINTON, WV 8TH ST.(WV RT. 39)

ESTABLISHED BY: THE THRASHER GROUP

CHIEF OF PARTY: ROBERT STARK

6

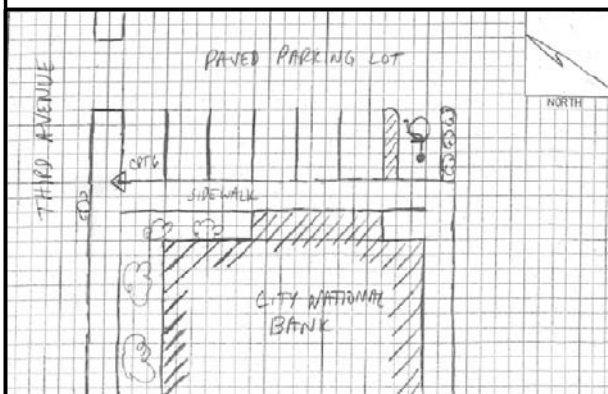
NORTHING (Y) = 446507.340

EASTING (X) = 2228839.859

ELEVATION (Z) = 2124.186

DETAILED DESCRIPTION:

NW CORNER OF PAVED PARKING LOT AND CONCRETE SIDEWALK AT CITY NATIONAL BANK, ALONG 8TH STREET (WV RT. 39).



CONTROL POINT LOCATION SHEET

VERTICAL DATUM: GEOID 12B COORDINATE DATUM: NAD 83 (FT), WV SOUTH ZONE

ORDER OF ACCURACY: RTK GPS 1/100,000

YEAR: 2019

ADDRESS: POCAHONTAS COUNTY, WEST VIRGINIA - RIMEL, WV; WV RT. 92

ESTABLISHED BY: THE THRASHER GROUP

CHIEF OF PARTY: MARK GALAGHER

7

NORTHING (Y) = 394779.991

EASTING (X) = 2258067.664

ELEVATION (Z) = 2423.104

DETAILED DESCRIPTION:

NE CORNER OF CONCRETE

SIDEWALK, AT HOUSE #4299

ANTHONY CREEK RD (WV RT. 92)



CONTROL POINT LOCATION SHEET

VERTICAL DATUM: GEOID 12B COORDINATE DATUM: NAD 83 (FT), WV SOUTH ZONE

ORDER OF ACCURACY: RTK GPS 1/100,000

YEAR: 2019

ADDRESS: POCAHONTAS COUNTY, WEST VIRGINIA – DROOP, WV BEAR TOWN RD

ESTABLISHED BY: THE THRASHER GROUP

CHIEF OF PARTY: CHRIS DEFINO

8

NORTHING (Y) = 388769.678

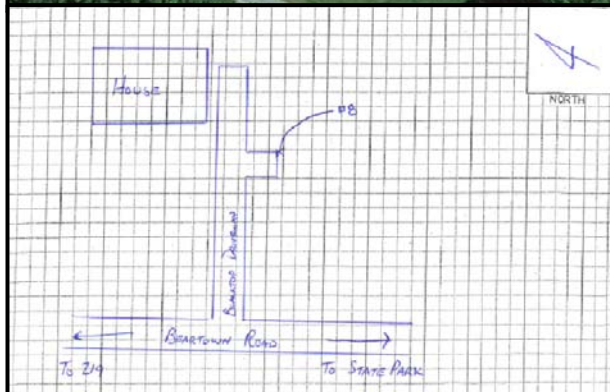
EASTING (X) = 2173605.915

ELEVATION (Z) = 3142.456

DETAILED DESCRIPTION:

SE CORNER OF PAVED

DRIVEWAY TURNAROUND, OFF OF
BEAR TOWN RD.



CONTROL POINT LOCATION SHEET

VERTICAL DATUM: GEOID 12B COORDINATE DATUM: NAD 83 (FT), WV SOUTH ZONE

ORDER OF ACCURACY: RTK GPS 1/100,000

YEAR: 2019

ADDRESS: POCAHONTAS COUNTY, WEST VIRGINIA – NEAR WOODROW, WV CO. RT. 86

ESTABLISHED BY: THE THRASHER GROUP

CHIEF OF PARTY: CHRIS DEFINO

9

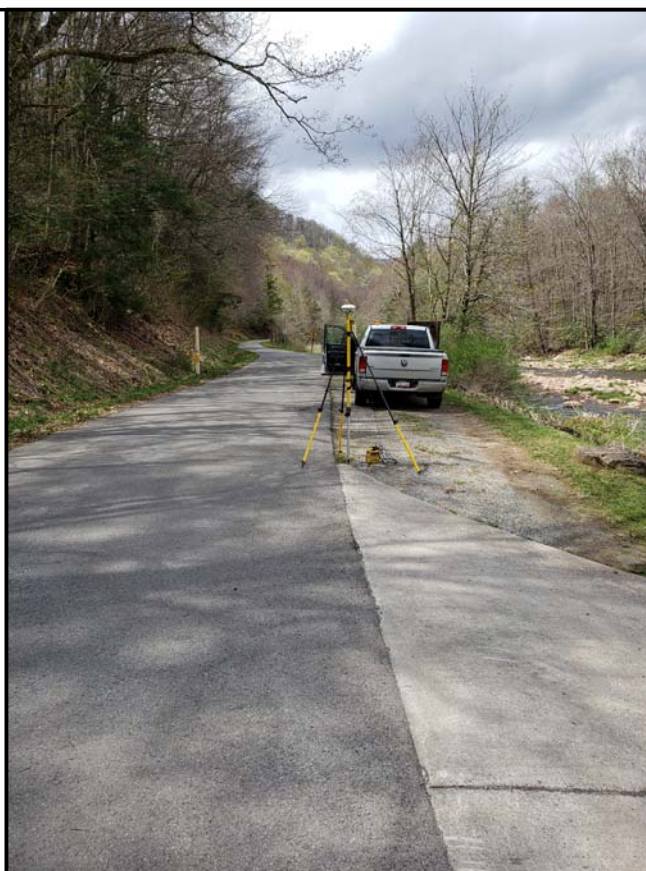
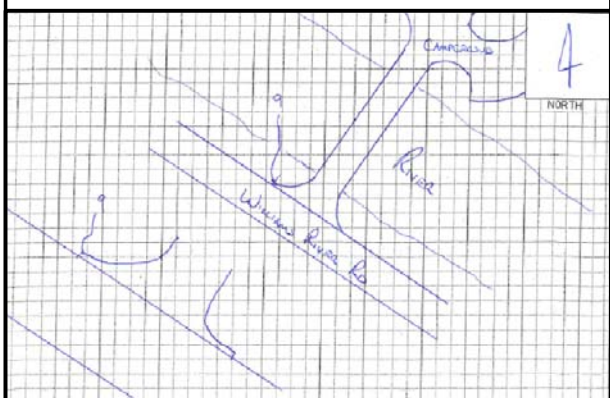
NORTHING (Y) = 489116.774

EASTING (X) = 2188502.780

ELEVATION (Z) = 2971.079

DETAILED DESCRIPTION:

NORTHERN MOST CORNER OF
CONCRETE DRIVEWAY APRON,
ALONG WILLIAMS RIVER RD.
(CO. RT. 86).



CONTROL POINT LOCATION SHEET

VERTICAL DATUM: GEOID 12B COORDINATE DATUM: NAD 83 (FT), WV SOUTH ZONE

ORDER OF ACCURACY: RTK GPS 1/100,000

YEAR: 2019

ADDRESS: POCAHONTAS COUNTY, WEST VIRGINIA- SNOWSHOE, WV CREEKSIDE DRIVE

ESTABLISHED BY: THE THRASHER GROUP

CHIEF OF PARTY: ROBERT STARK

10

NORTHING (Y) = 525306.374

EASTING (X) = 2257107.076

ELEVATION (Z) = 4438.278

DETAILED DESCRIPTION:

SE CORNER OF CONCRETE DRIVE

AT NE CORNER OF PAVED DRIVE;

AT CONDO #142, CREEK SIDE

VILLAS OFF OF CREEKSIDE DRIVE

WEST VIRGINIA WAY.

