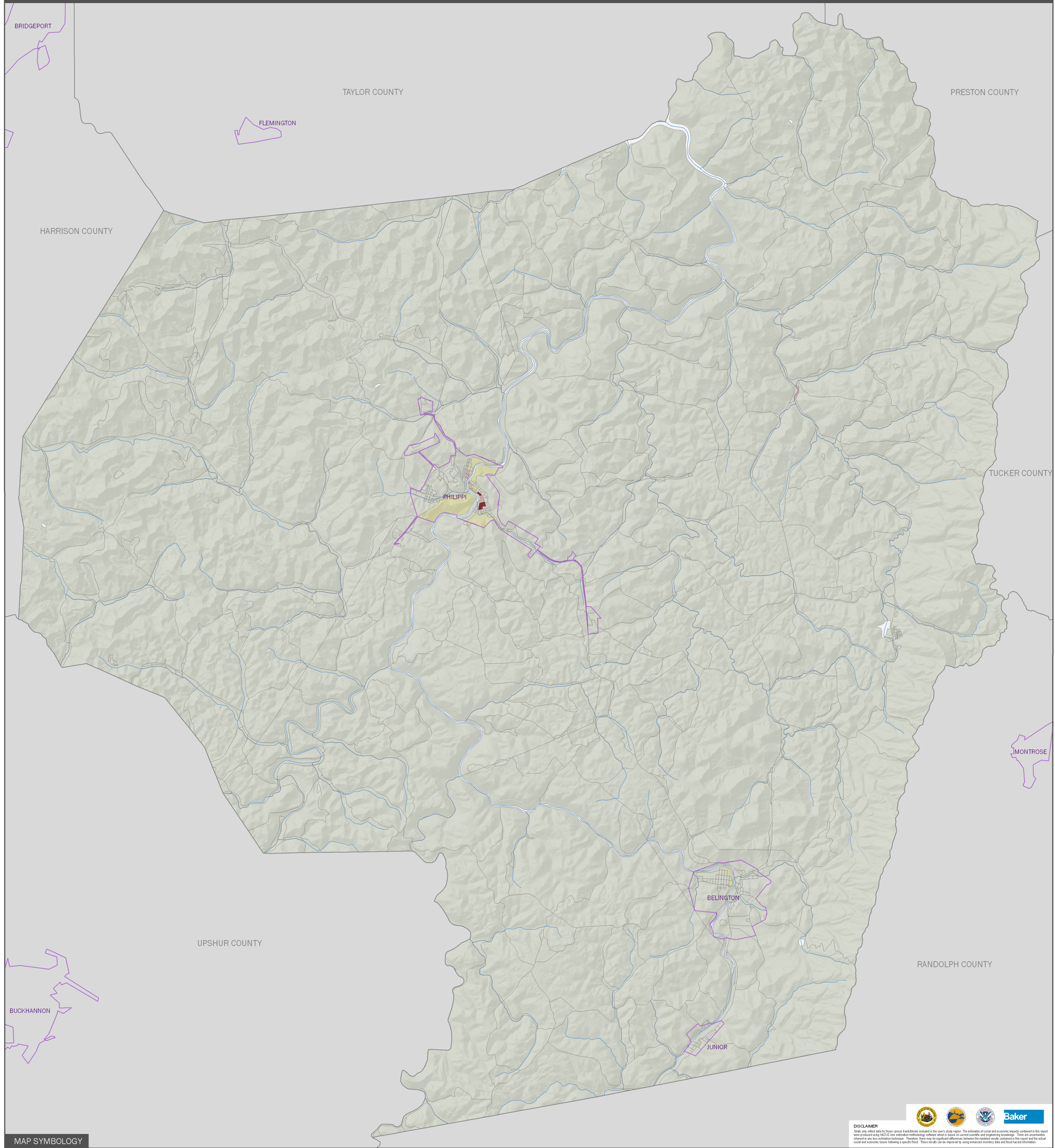


# Barbour County

WEST VIRGINIA



**MAP SYMBOLOGY**

- Census Block
- Community
- Stream
- Outside County

100 Year Return Period  
**SHELTER DISPLACEMENT**  
by census block (per person)

1 - 9	10 - 19	20 - 29	30 - 39	≥ 40
-------	---------	---------	---------	------

0 2 4 8  
Miles

**DISCLAIMER**  
 Note: only reflect data for those census tracts/blocks included in the user's study region. The estimates of social and economic impacts contained in this report were produced using HAZUS loss estimation methodology software which is based on current scientific and engineering knowledge. There are uncertainties inherent in any loss estimation technique. Therefore, there may be significant differences between the modeled results contained in this report and the actual social and economic losses following a specific flood. These results can be improved by using enhanced inventory data and flood hazard information.