

National Wetlands Inventory (Biota)

Description

West Virginia Wetlands Inventory is a record of wetlands location and classification as defined by the National Wetlands Inventory (NWI) of the U.S. Fish and Wildlife Service. This dataset is available as a single statewide coverage. The data provide consultants, planners, and resource managers with information on wetland location and type, however, not all wetlands are mapped as explained under "data limitations" below.

The originator of the inventory is the WV Department of Environmental Protection in coordination with the U.S. Fish and Wildlife Service. Time period of content ranges from Feb. 1971 to Dec. 1992, with updates to 6% of the data in 2018. Wetland point, line and area features are compiled through manual photo interpretation of aerial photography supplemented by soil surveys, digital elevation data, and field checking.

Data Limitations and Quality The quality of the wetland data is variable mainly due to source photography, ease or difficulty of interpreting specific wetland types, and survey methods (e.g., level of field effort and state-of-the-art of wetland delineation). Most of the mapping dates from the early 1980's, with only 6% of the dataset updated in 2019. Note that forested wetlands, smaller wetlands, and wetlands on the drier end of the moisture gradient can be difficult to discern on aerial photographs, and many of these are not mapped. WVDEP estimates that one-third to one-half of all wetlands in West Virginia have not yet been mapped.

Scale

1:24000

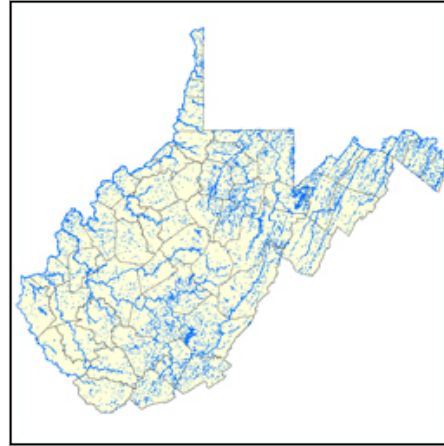
Extent

[Statewide](#)

Attribute Information

The wetland classification system is hierarchical, with wetlands and deepwater habitats divided among five major systems at the broadest level. Three of five systems occur in West Virginia including Riverine (rivers, creeks, and streams), Lacustrine (lakes and deep ponds), and Palustrine (shallow ponds, marshes, swamps, sloughs). Marine (open ocean and associated coastline) and Estuarine (salt marshes and brackish tidal water) do not occur in West Virginia. Map attribute codes can be downloaded from the National Wetlands Inventory website.

Data Preview



National Wetlands Inventory (Biota)

Data Download

[ESRI Geodatabase](#)

[Shapefile](#)

Keywords

[National Wetlands Inventory](#), [WVDEP](#), [NWI](#), [Wetlands](#), [_palustrine](#), [_riverine](#), [_lacustrine](#), [_emergent](#), [_forest](#), [_scrub-shrub](#), [_aquatic bed](#)

Data Source

WV DEP in coordination with U.S. Fish and Wildlife Service

Data Created

2019

Coordinate System

UTM NAD83 meters

File Format

shapefile, ESRI
geodatabase

Supplemental Information

On-line linkage: <http://wetlands.fws.gov/> (OFFSITE)

Full Metadata

[Click for metadata](#)