

NOTES TO USERS

This map is for use in administering the National Flood Insurance Program. It is not intended for use in any other manner. The community map repository should be consulted for possible updates or additional flood hazard information.

To obtain more detailed information in areas where **Base Flood Elevations** (BFEs) and/or **Floodway Data** and/or Summary of Stillwater Elevations (SSEs) are shown, users are encouraged to consult the Flood Profiles, Floodway Data and/or Summary of Stillwater Elevations (SSEs) for the community. Users should be aware that BFEs shown on the FIRM represent rounded whole-foot elevations. These BFEs are intended for flood insurance rating purposes. Accordingly, flood elevation data presented in the FIS report should be utilized in conjunction with the FIRM for purposes of construction and/or floodplain management.

Coastal Base Flood Elevations shown on this map apply only inlandward of 0.0 National Geodetic Vertical Datum of 1929 (NGVD 29). Users of this map should consult the National Geodetic Survey (NGS) website at www.ngs.noaa.gov for information regarding the datum conversion between the National Geodetic Vertical Datum of 1929 and the Mean American Vertical Datum of 1988, and the National Geodetic Survey website at www.ngs.noaa.gov to contact the National Geodetic Survey at the following address:

Geodetic Reference System Division
National Geodetic Survey
Silver Spring Metro Center
1315 East-West Highway
Silver Spring, Maryland 20910
(301) 763-9191

To obtain correct elevation, description, and/or location information for **bench marks** shown on this map, users should consult the National Geodetic Survey website at www.ngs.noaa.gov.

The **projection** used in the preparation of this map was Universal Transverse Mercator (UTM) Zone 18N. The datum is North American Datum of 1983 (NAD 83). Differences in datum, projection or UTM zones used in the production of FIRMs for adjacent jurisdictions may result in slight positional differences in map features across jurisdiction boundaries. These differences do not affect the accuracy of this FIRM.

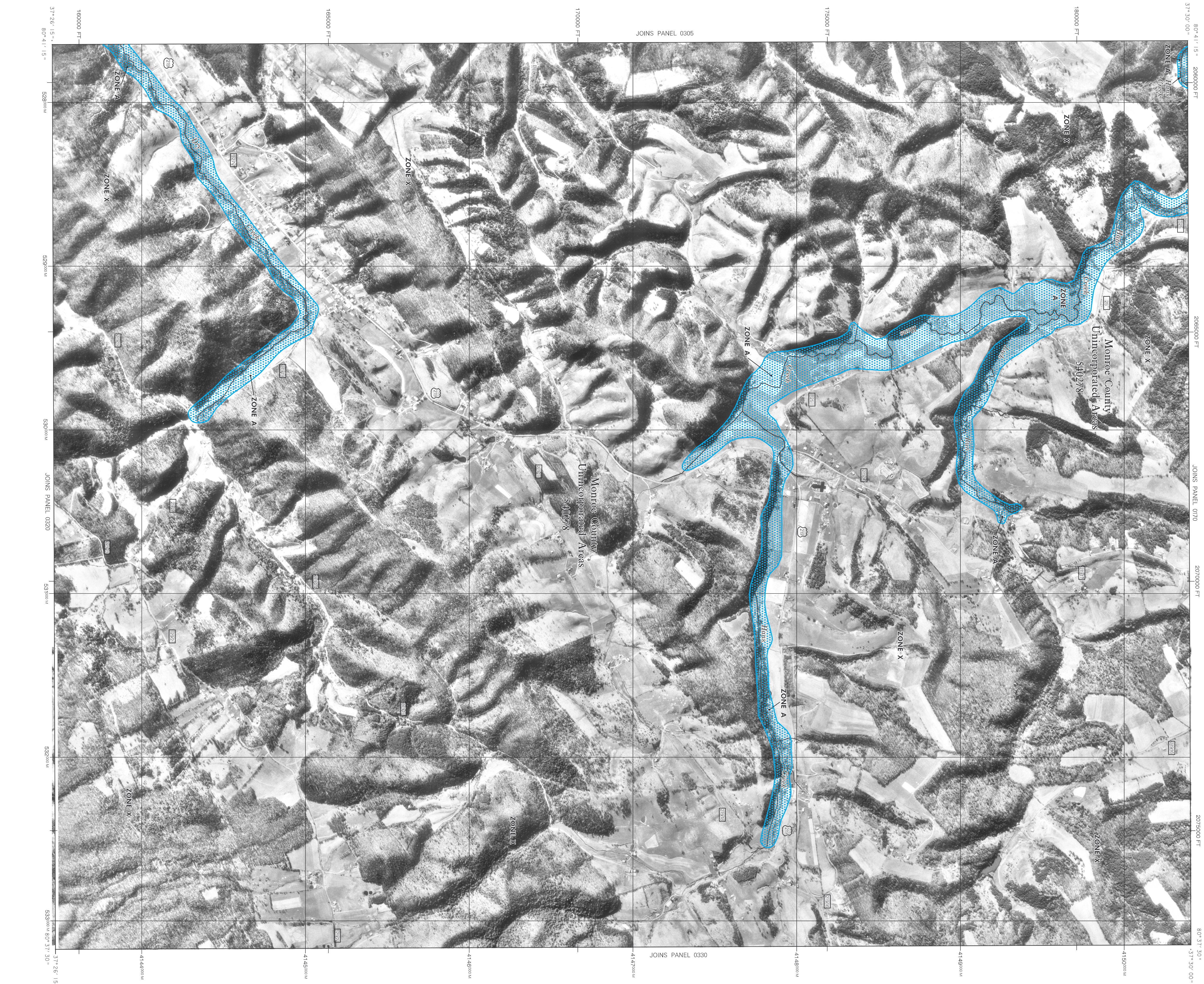
Flood elevations on this map are referenced to the National Geodetic Vertical Datum of 1929 (NGVD 29). Users of this map should consult the National Geodetic Survey website at www.ngs.noaa.gov for information regarding the datum conversion between the National Geodetic Vertical Datum of 1929 and the Mean American Vertical Datum of 1988, and the National Geodetic Survey website at www.ngs.noaa.gov to contact the National Geodetic Survey at the following address:

Geodetic Reference System Division
National Geodetic Survey
Silver Spring Metro Center
1315 East-West Highway
Silver Spring, Maryland 20910
(301) 763-9191

This map reflects more detailed and up-to-date stream channel configurations than those shown on the previous FIRM for this jurisdiction. The floodplains shown on this map were derived from the most current available data and are subject to change. Users are advised to consult with the local emergency management agency for the most current information regarding stream channel configurations. As a result, the Flood Profiles and Floodway Data tables for Brush Creek, Greenhorn River, Ron Creek, and Scott Branch in the Flood Insurance Study (FIS) report may differ from what is shown on this map.

Copyright Notice: This map is based on the best data available at the time of publication. Because changes due to amendments or discontinuities may have occurred after this map was published, map users should contact appropriate community officials to verify current corporate limit locations.

Please refer to the separately printed **Map Index** for an overview map of the county showing the layout of map panels, community map repository addresses, and/or other information. The FIRM Map Service Center may be contacted by fax at 1-800-368-5850 and 1-800-368-5852 and 1-800-368-5853 and 1-800-368-5854 and 1-800-368-5855 and 1-800-368-5856 and 1-800-368-5857 and 1-800-368-5858 and 1-800-368-5859 and 1-800-368-5860 and 1-800-368-5861 and 1-800-368-5862 and 1-800-368-5863 and 1-800-368-5864 and 1-800-368-5865 and 1-800-368-5866 and 1-800-368-5867 and 1-800-368-5868 and 1-800-368-5869 and 1-800-368-5870 and 1-800-368-5871 and 1-800-368-5872 and 1-800-368-5873 and 1-800-368-5874 and 1-800-368-5875 and 1-800-368-5876 and 1-800-368-5877 and 1-800-368-5878 and 1-800-368-5879 and 1-800-368-5880 and 1-800-368-5881 and 1-800-368-5882 and 1-800-368-5883 and 1-800-368-5884 and 1-800-368-5885 and 1-800-368-5886 and 1-800-368-5887 and 1-800-368-5888 and 1-800-368-5889 and 1-800-368-5890 and 1-800-368-5891 and 1-800-368-5892 and 1-800-368-5893 and 1-800-368-5894 and 1-800-368-5895 and 1-800-368-5896 and 1-800-368-5897 and 1-800-368-5898 and 1-800-368-5899 and 1-800-368-5900 and 1-800-368-5901 and 1-800-368-5902 and 1-800-368-5903 and 1-800-368-5904 and 1-800-368-5905 and 1-800-368-5906 and 1-800-368-5907 and 1-800-368-5908 and 1-800-368-5909 and 1-800-368-5910 and 1-800-368-5911 and 1-800-368-5912 and 1-800-368-5913 and 1-800-368-5914 and 1-800-368-5915 and 1-800-368-5916 and 1-800-368-5917 and 1-800-368-5918 and 1-800-368-5919 and 1-800-368-5920 and 1-800-368-5921 and 1-800-368-5922 and 1-800-368-5923 and 1-800-368-5924 and 1-800-368-5925 and 1-800-368-5926 and 1-800-368-5927 and 1-800-368-5928 and 1-800-368-5929 and 1-800-368-5930 and 1-800-368-5931 and 1-800-368-5932 and 1-800-368-5933 and 1-800-368-5934 and 1-800-368-5935 and 1-800-368-5936 and 1-800-368-5937 and 1-800-368-5938 and 1-800-368-5939 and 1-800-368-5940 and 1-800-368-5941 and 1-800-368-5942 and 1-800-368-5943 and 1-800-368-5944 and 1-800-368-5945 and 1-800-368-5946 and 1-800-368-5947 and 1-800-368-5948 and 1-800-368-5949 and 1-800-368-5950 and 1-800-368-5951 and 1-800-368-5952 and 1-800-368-5953 and 1-800-368-5954 and 1-800-368-5955 and 1-800-368-5956 and 1-800-368-5957 and 1-800-368-5958 and 1-800-368-5959 and 1-800-368-5960 and 1-800-368-5961 and 1-800-368-5962 and 1-800-368-5963 and 1-800-368-5964 and 1-800-368-5965 and 1-800-368-5966 and 1-800-368-5967 and 1-800-368-5968 and 1-800-368-5969 and 1-800-368-5970 and 1-800-368-5971 and 1-800-368-5972 and 1-800-368-5973 and 1-800-368-5974 and 1-800-368-5975 and 1-800-368-5976 and 1-800-368-5977 and 1-800-368-5978 and 1-800-368-5979 and 1-800-368-5980 and 1-800-368-5981 and 1-800-368-5982 and 1-800-368-5983 and 1-800-368-5984 and 1-800-368-5985 and 1-800-368-5986 and 1-800-368-5987 and 1-800-368-5988 and 1-800-368-5989 and 1-800-368-5990 and 1-800-368-5991 and 1-800-368-5992 and 1-800-368-5993 and 1-800-368-5994 and 1-800-368-5995 and 1-800-368-5996 and 1-800-368-5997 and 1-800-368-5998 and 1-800-368-5999 and 1-800-368-6000.



LEGEND

- SPECIAL FLOOD HAZARD AREAS (SFHA) SUBJECT TO INUNDATION BY THE 1% ANNUAL CHANCE FLOOD
- The 1% annual chance flood (100-year flood) also known as the base flood is the flood that has a 1% chance of being equaled or exceeded in any given year. The Special Flood Hazard Areas (SFHA) are the areas that are subject to inundation by the 1% annual chance flood. The SFHA includes Zone A, AE, AH, AO, AR, AP, V, and VE. The base flood elevation is the water-surface elevation of the 1% annual chance flood.
- No Base Flood Elevations determined.
- Base Flood Elevations determined.
- Flood depths of 1 to 3 feet (usually areas of penitents); these Flood depths are determined by a flood control system that was subsequently discontinued. Zone AE indicates that the former flood control system is a general flood.
- Area to be protected from 1% annual chance flood by a Federal Flood Control System under construction; no base flood elevations determined.
- Coastal flood zone with velocity hazard (wave action); no base flood elevations determined.
- Coastal flood zone with velocity hazard (wave action); base flood elevations determined.
- FLOODWAY AREAS IN ZONE AE
- The floodway is the channel of a stream, plus any adjacent floodplain areas that must be kept free of encroachment so that the 1% annual chance flood can be carried without increases in flood heights.
- OTHER FLOOD AREAS
- Areas of 0.2% annual chance flood; areas of 1% annual chance flood with average depths of less than 1 foot or with damage less than that of the 1% annual chance flood.
- OTHER AREAS
- Areas determined to be outside the 0.2% annual chance floodplain.
- Areas in which flood hazards are undetermined but possible.
- COASTAL BARRIER RESOURCES SYSTEM (CBRS) AREAS
- OTHERWISE PROTECTED AREAS (OPAs)
- CBRS areas and OPAs are normally located within or adjacent to Special Flood Hazard Areas.
- 1% annual chance floodplain boundary
- 0.2% annual chance floodplain boundary
- Floodway boundary
- Zone D boundary
- Zone D and OPAs boundary
- Boundary defining Special Flood Hazard Areas of different base flood elevations; flood depths or flood velocities.
- Base Flood Elevation line and value elevation in feet (EL 987)
- Base Flood Elevation value where uniform within zone; referenced to the National Geodetic Vertical Datum of 1929
- Cross section line
- Transect line
- Geographic coordinates referenced to the North American Datum of 1983 (NAD 83)
- 100-year Universal Transverse Mercator grid values; zone 17
- 500-foot grid ticks; West Virginia State Plane coordinate system projection
- UTM projection
- Bench mark; see explanation in Notes to Users section of this FIRM panel
- River mile
- MAP REPOSITORY
- Refer to Being of Map Repository on Map Index
- EFFECTIVE DATE OF COMPILED FLOOD INSURANCE RATE MAP
- JUNE 17, 2002
- EFFECTIVE DATES OF REVISIONS TO THIS PANEL

NFIP

FIRM

FLOOD INSURANCE RATE MAP

MONROE COUNTY, WEST VIRGINIA AND INCORPORATED AREAS

PANEL 300 OF 300

(SEE MAP INDEX FOR FIRM PANEL LAYOUT)

COMPANS

COMUNITY

MONROE COUNTY

NUMER, PANEL, SHEET

140209 0300 C

MAP NUMBER

540630330 C

EFFECTIVE DATE

JUNE 17, 2002

Federal Emergency Management Agency