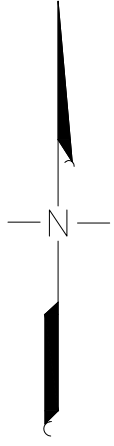
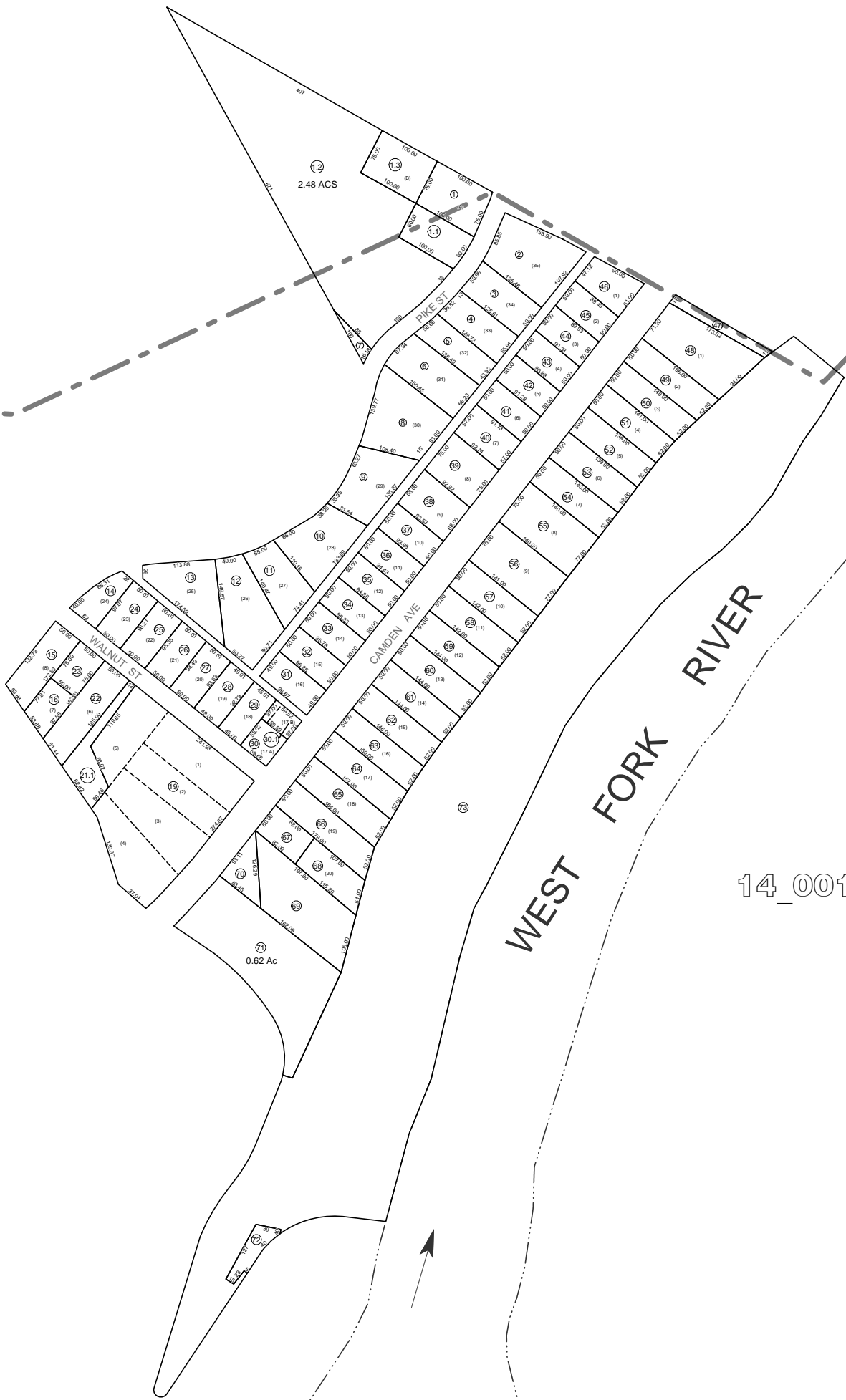


02\_0061

11\_0034



2.48 ACS



14\_0015

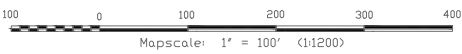
15\_0036

15\_0037

09\_0017

Monongah Lincoln  
15-35

All tax maps created under the provisions of reappraisal legislation are the property of the Marion County Reappraisal Program and the reproduction, copying, distribution or sale of such maps or any copies thereof without the written permission of the Marion County Assessor is prohibited by law. 03-14



LEGEND

Property Line	—————	Original Lot Line	- - - - -
Edge of roadway	—————	Lot number	12
Corporation Line	—————	Tax Parcel Number	17
Hydrography	~~~~~	Railroad	+++++

Office of the  
Marion County Assessor

Revision History	
Revision	Date
1	NEW MAP TN OCT, 2016
2	
3	
4	
5	

Monongah Lincoln  
15-35