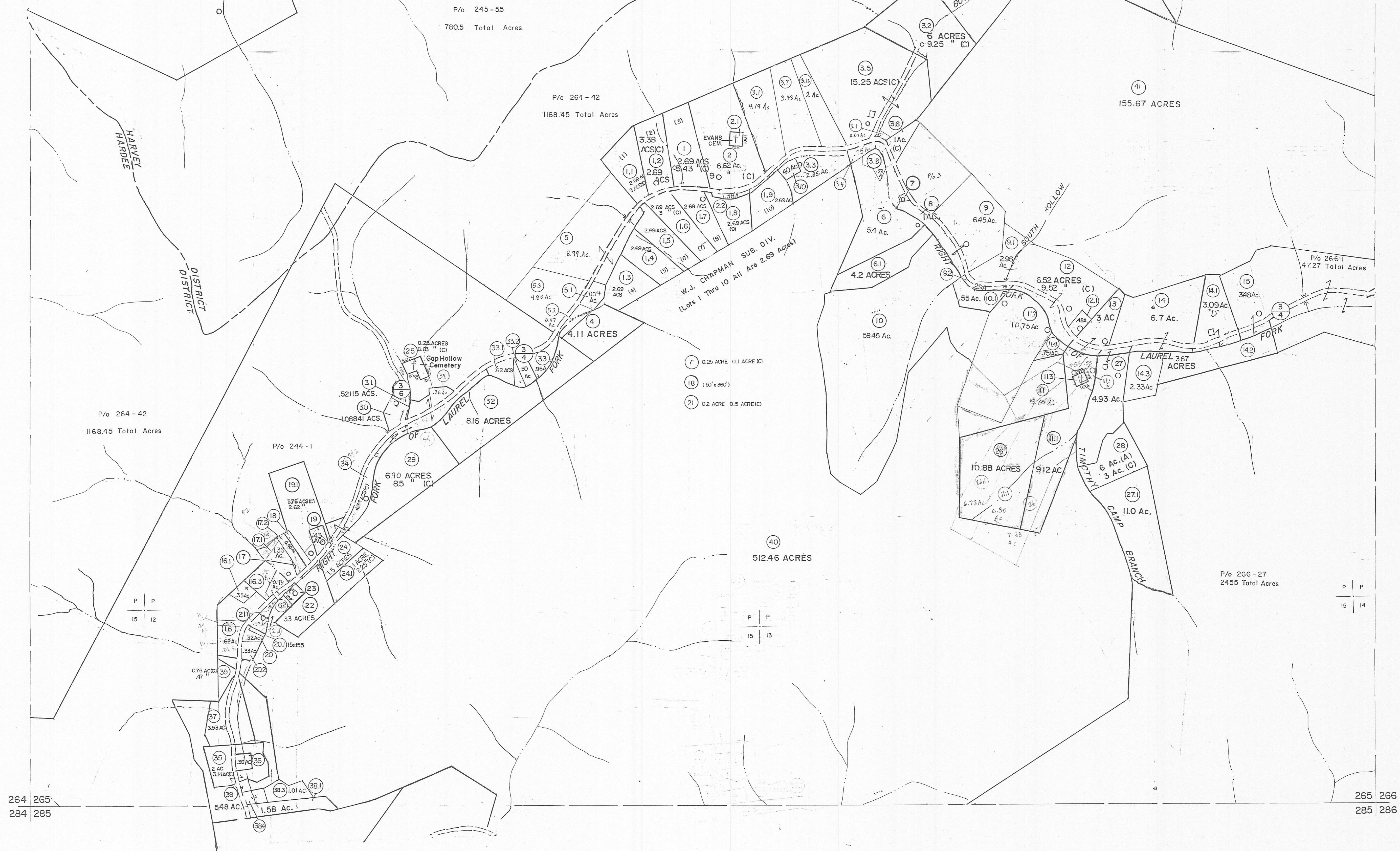


244 245
264 265

245 246
265 266



For Tax Purposes Only

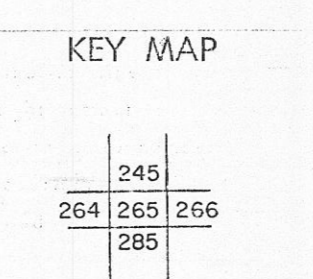
Prepared by
MICHAEL BAKER, JR., INC.
 Consulting Engineers
 Rochester, Pennsylvania

Legend

Property line	---	Original lot line	---
Edge of pavement or roadway	---	Dead lot number	(15)
Corporation line	---	Parcel or index number	(99)
District line	---	Improvement	o
County line	---	Railroad	---

Revisions

1	2-15-63	9	2-4-93 AM	17
2	10-1-63	10	1-97 AM	18
3	9/24/74	11	6-98 AM	19
4	3-31-84	12	1-00 AM	20
5	9/11/88	13	2-01 AM	21
6	6-1-87	14	3/05 BAM	22
7	Revised to 7-1-88	15	8-01 AM	23
8	Revised to 1-1-90	16	8/01 AM	24



MINGO COUNTY
 STATE OF WEST VIRGINIA
 Office of Assessor

DISTRICT
HARDEE

SHEET NO: 265

Date, Aerial Photography: April, 1961
 Photo No: _____
 Date, Map: July, 1962
 Scale: 1" = 400'