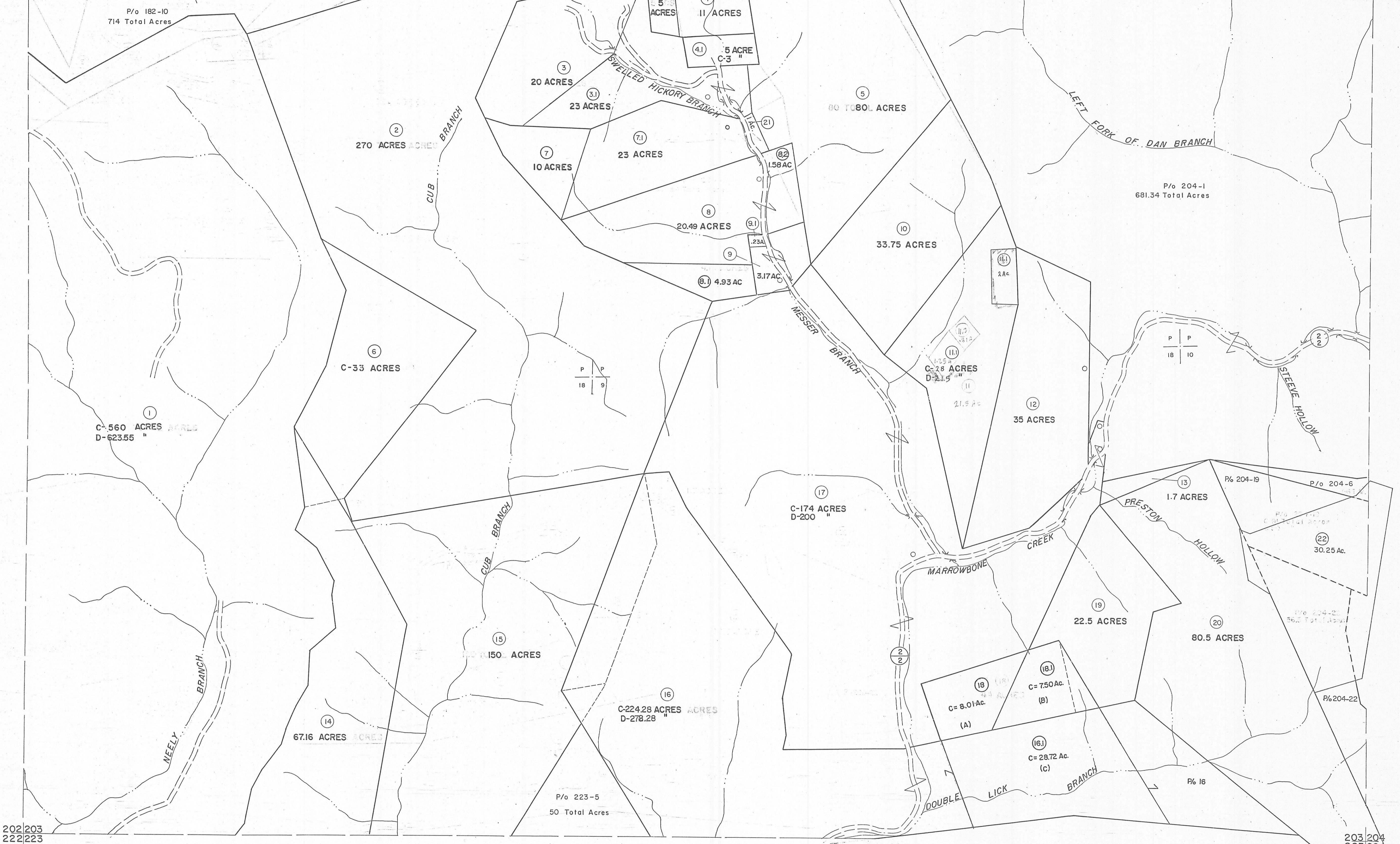


182 | 183
202 | 203

183 | 184
203 | 204



202 | 203
222 | 223

203 | 204
223 | 224

For Tax Purposes Only

Prepared by
MICHAEL BAKER, JR., INC.
Consulting Engineers
Rochester, Pennsylvania

| Legend | |
|-----------------------------|-------|
| Property line | ————— |
| Edge of pavement or roadway | ————— |
| Corporation line | ————— |
| District line | ————— |
| County line | ————— |
| Original lot line | ----- |
| Deed lot number | (15) |
| Parcel or index number | (22) |
| Improvement | o |
| Railroad | + |

| Revisions | |
|-----------|--------------------|
| 1 | 3-18-68 |
| 2 | 9-19-74 |
| 3 | 3-31-84 |
| 4 | 7-1-84 |
| 5 | 8-20-86 PENTREE |
| 6 | Revised to 2-15-89 |
| 7 | 1-97 AM |
| 8 | 5-98 AM |
| 9 | 1-99 AM |
| 10 | 3-01 AMM |
| 11 | 3/05 BMM |
| 12 | |
| 13 | |
| 14 | |
| 15 | |
| 16 | |
| 17 | |
| 18 | |
| 19 | |
| 20 | |
| 21 | |
| 22 | |
| 23 | |
| 24 | |

KEY MAP

MINGO COUNTY
STATE OF WEST VIRGINIA
Office of Assessor

DISTRICT
KERMIT

SHEET NO:203

Date, Aerial Photography: April, 1961
Date, Map: July, 1962
Scale: 1" = 400'