

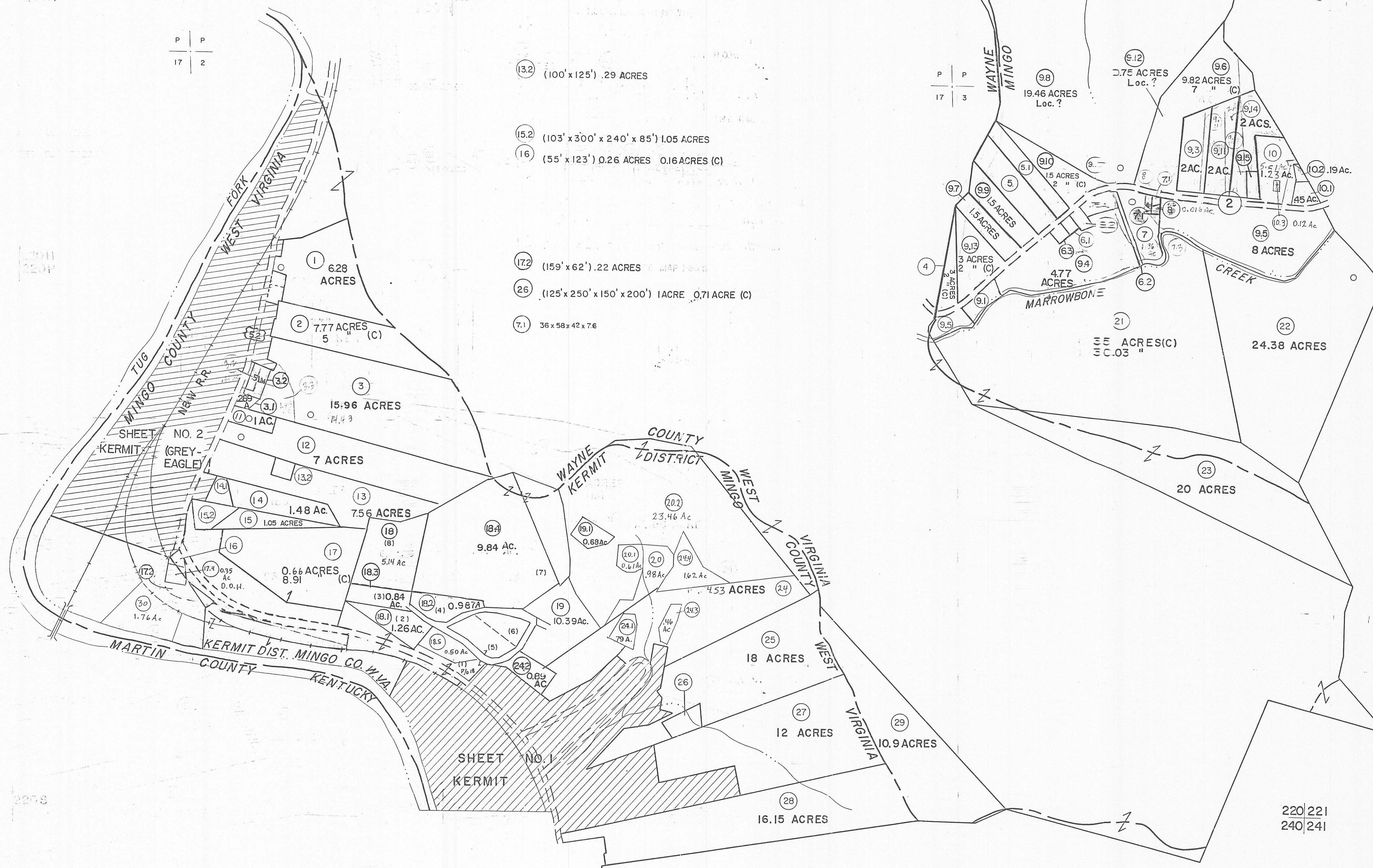
200  
220

200 201  
220 221

- 5 (170' x 500' x 170' x 600' s) 2.15 ACRES(C) 0.93 ACRES
- 5.1 (100' x 600' s x 100' x 700' s) 1.49 ACRES (C) 0.54 ACRES

- 6.1 (75' x 100') .17 ACRES
- 7.1 1.88 ACRES
- 8 (50' x 100') .11 ACRES
- 6.2 (45' x 289' x 195' x 45' x 195' x 289') 0.13 ACRES
- 6.3 (75' x 50' x 100' x 50' x 75' x 100') 0.23 ACRES
- 9.2 40 ACRES

- 13.2 (100' x 125') .29 ACRES
- 15.2 (103' x 300' x 240' x 85') 1.05 ACRES
- 16 (55' x 123') 0.26 ACRES 0.16 ACRES (C)
- 17.2 (159' x 62') .22 ACRES
- 26 (125' x 250' x 150' x 200') 1 ACRES 0.71 ACRES (C)
- 7.1 36 x 58 x 42 x 7.6



220  
240

220 221  
240 241

For Tax Purposes Only

Prepared by  
MICHAEL BAKER, JR., INC.  
Consulting Engineers  
Rochester, Pennsylvania

Legend

Property line	—	Original lot line	—
Edge of pavement or roadway	—	Dead lot number	(15)
Corporation line	—	Parcel or index number	(16)
District line	—	Improvement	o
County line	—	Railroad	—

Revisions

1	3-18-63	9	1-97 AM	17
2	10-2-63	10	5-98 AM	18
3	9/23/74	11	9-01 AM	19
4	3-31-84	12	3/05 BAM	20
5	7-1-84	13	8-02 AM	21
6	9-5-86 PENTREE	14	8/11 LM	22
7	Revised to 2/15/89	15		23
8	1/1/90	16		24

KEY MAP

200  
220 221  
240

MINGO COUNTY  
STATE OF WEST VIRGINIA  
Office of Assessor

DISTRICT

KERMIT

SHEET NO: 220

Date, Aerial Photography: April, 1961 Date, Map: July, 1962  
Photo No: Scale: 1" = 400'