

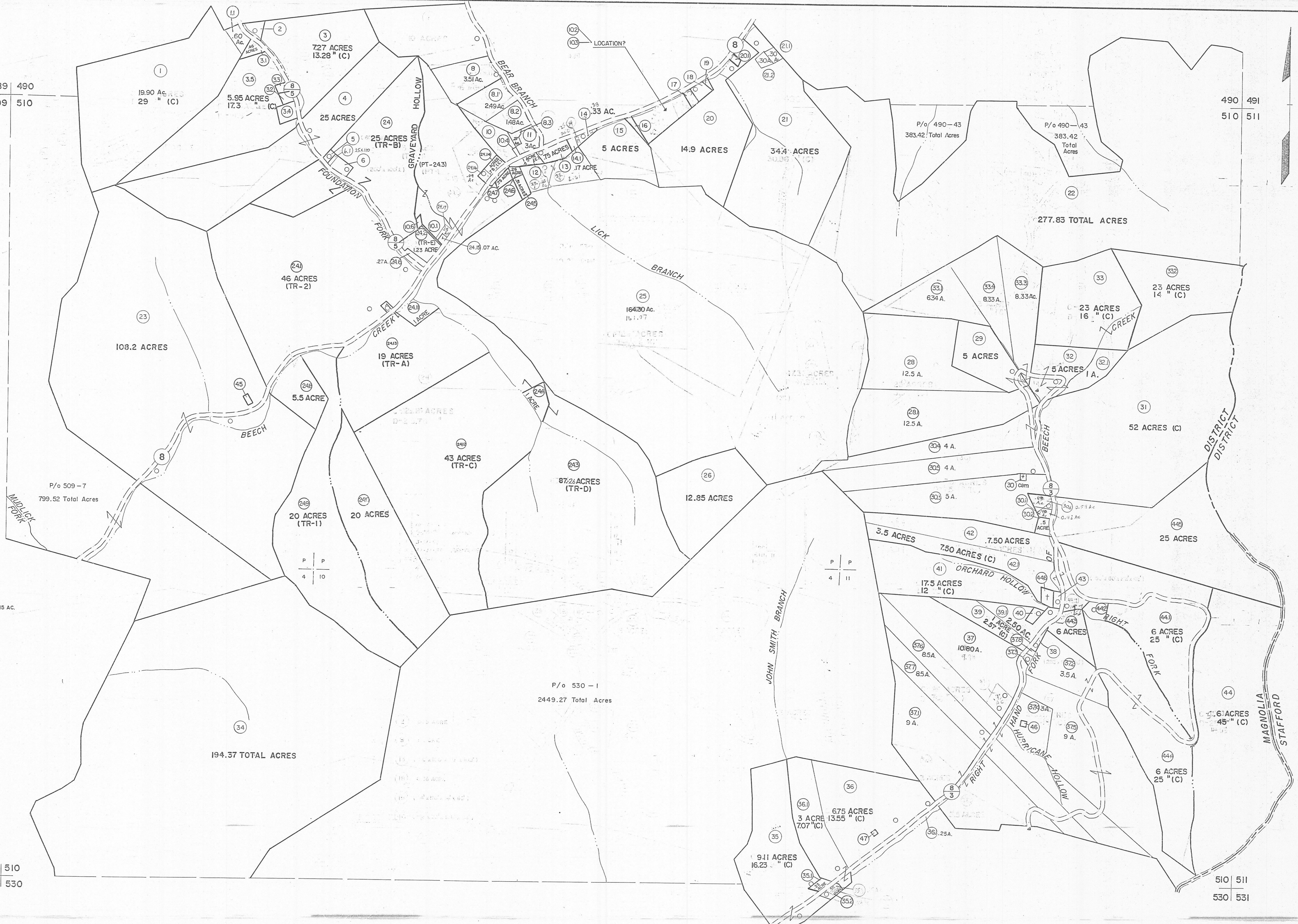
489 490
509 510

490 491
510 511

509 510
529 530

510 511
530 531

- ② .5 AC.
- ③② .23 AC.
- ③③ .18 AC.
- ③④ (170'x150') .59 AC.
- ⑤ .25 AC. .14 AC (C)
- ⑥ 1 AC. .46 AC. (C)
- ⑧ 1 AC. .78 AC. (C)
- ⑩① .125 AC.
- ⑩② (35'x 80') .06 AC.
- ⑩③ (50'x100')
- ⑬ .2 AC.
- ⑭ .25 AC.
- ⑮ .58 AC.
- ⑲ (54'x110'x14'x110')
- ⑳ (56'x92'x4'x92')
- ㉑ .20 AC.
- ㉒ (255'x186'x70') 1.5 AC. .15 AC.
- ④① (156'x72'x138'x96')
- ④③ 1 AC. .2 AC. (C)
- ④④ (245'x170'x67'x170')
- ④⑤ .39 AC. CEM.
- ④⑥ (50's x 100's) CEM.
- ④⑦ (50's x 50's) CEM.
- ④⑧ (50's x 50's) CEM.
- ⑤⑦⑧ .08 AC.
- ⑤⑦⑨ 0.12 AC.



100 mi. L.T. W.V. 45

For Tax Purposes Only

Prepared by
MICHAEL BAKER, JR., INC.
Consulting Engineers
Rochester, Pennsylvania

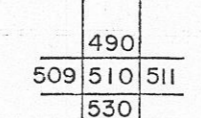
Legend

Property line	—	Original lot line	—
Edge of pavement or roadway	—	Deed lot number	(15)
Corporation line	—	Parcel or index number	(19)
District line	—	Improvement	o
County line	—	Railroad	—

Revisions

1	3-18-63	9	3-05 BAH	17
2	10-1-63	10	8/11 L.M.	18
3	9-24-74 GUNNOR B.S.	11		19
4	3-31-84	12		20
5	12-12-86 PENTREE	13		21
6	3-18-91 A.M.	14		22
7	4-27 A.M.	15		23
8	6-9-91 A.M.	16		24

KEY MAP



MINGO COUNTY
STATE OF WEST VIRGINIA
Office of Assessor

DISTRICT

MAGNOLIA

SHEET NO: 510

Date, Aerial Photography: April, 1961 Date, Map: July, 1962
Photo No: Scale: 1" = 400'