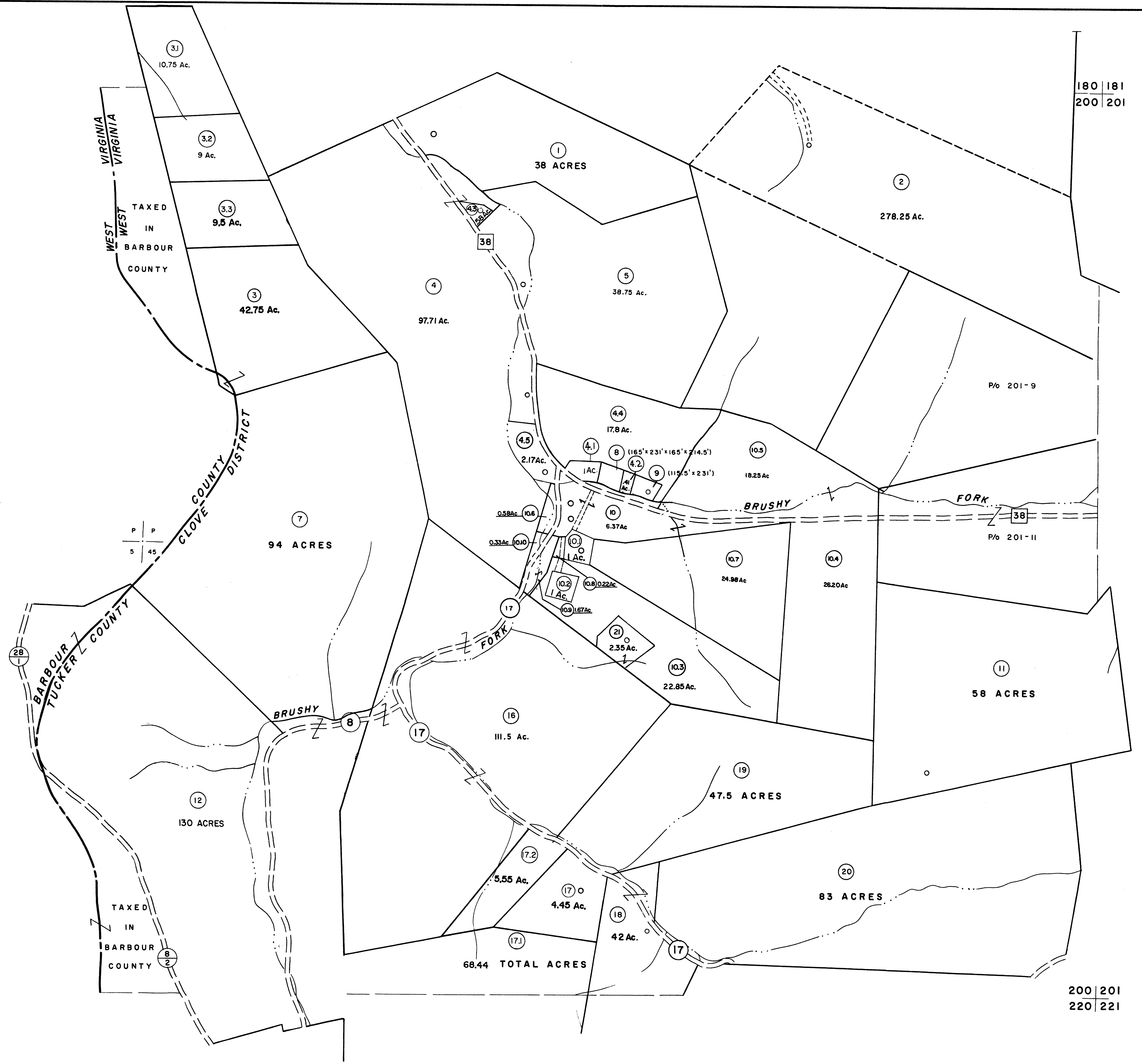


180  
200

180 | 181  
200 | 201



200  
220

200 | 201  
220 | 221

For Tax Purposes Only  
 Prepared by  
**MICHAEL BAKER, JR., INC.**  
 Consulting Engineers  
 Rochester, Pennsylvania

Legend	
Property line	—
Edge of pavement or roadway	— — — —
Corporation line	— · — · —
District line	- - - - -
County line	- - - - -
Original lot line	- - - - -
Deed lot number	(15)
Parcel or index number	(8)
Improvement	o
Railroad	— + — + —

Revisions			
1	6-3-64	9	SLS INC. - DDC 5/97
2	6-3-75	10	SLS INC. 2/19/98 DSW
3	1-1-88	11	SLS INC. 1/27/99 DSW
4	1-1-88	12	ESI 2/7/02 REK
5	OGIS 12/30/90 DSH	13	HBS 2/22/04
6	OGIS 3-19-92 TL	14	3/21/05 SBH
7	OGIS 2-95 HD	15	6-22-06 H-4-S
8	O.G.I.S 4-1-96 J.E.B	16	5-9-10 H-4-S
17	5-4-13	17	5-4-13 H-4-S
18	5/26/15	18	5/26/15 SBH
19	7-19-17	19	7-19-17 SLS
20		20	
21		21	
22		22	
23		23	
24		24	

KEY MAP

**TUCKER COUNTY**  
 STATE OF WEST VIRGINIA  
 Office of Assessor

DISTRICT  
**CLOVER**  
 SHEET NO: **200**  
 Date, Aerial Photography: Nov., 1961 Date, Map: Dec., 1962  
 Photo No: Scale: 1" = 400'