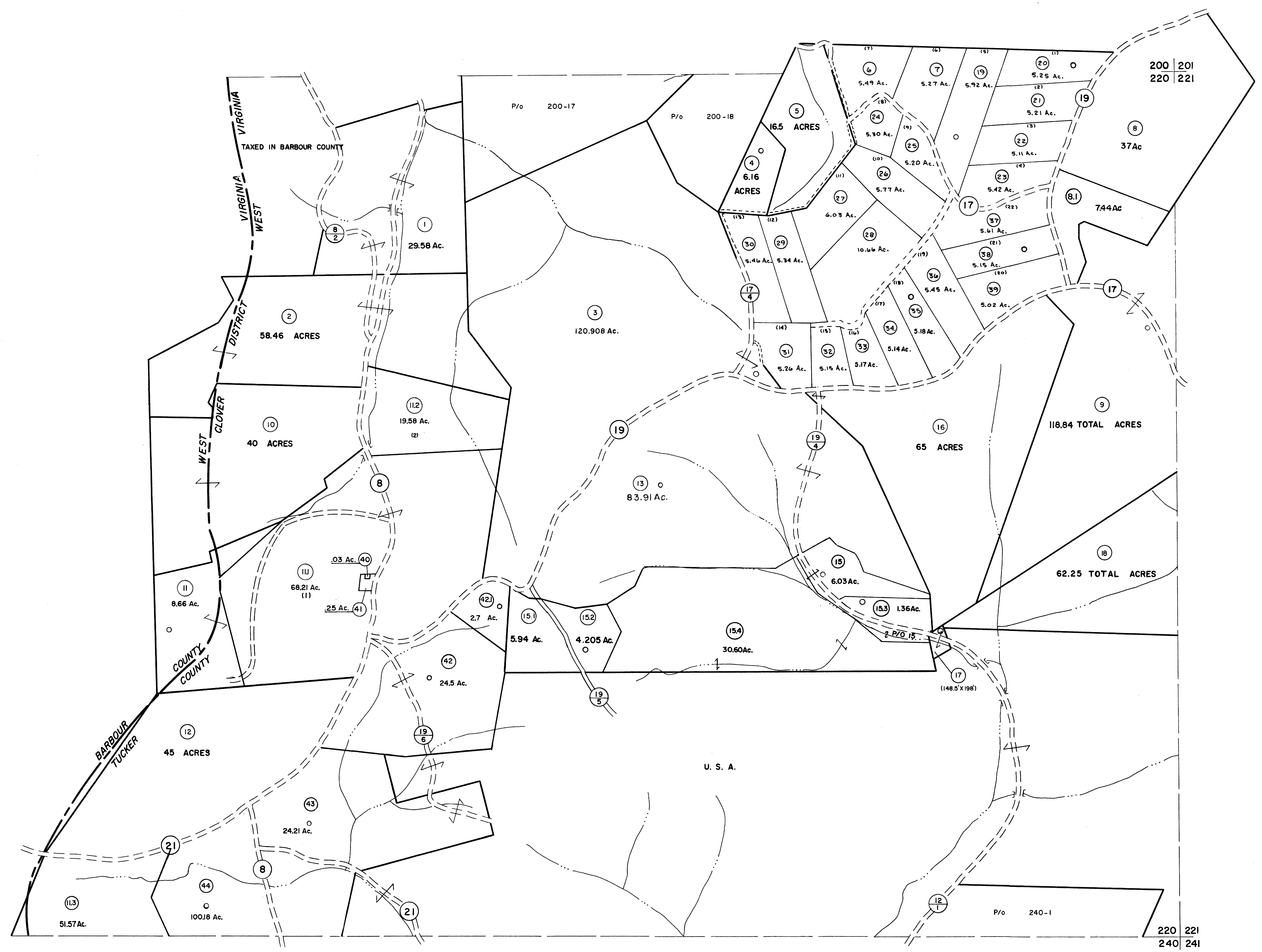


200  
220

220  
240



For Tax Purposes Only

Prepared by  
**MICHAEL BAKER, JR., INC.**  
 Consulting Engineers  
 Rochester, Pennsylvania

Legend	
Property line	—————
Edge of pavement or roadway	——— ———
Corporation line	————— —————
District line	————— —————
County line	————— —————
Original lot line	—————
Deed lot number	(15)
Parcel or index number	(19)
Improvement	○
Railroad	——+——

Revisions	
1 6-3-75 JC	9 OGIS 4-95 HD 17 5-8-10 H+S
2 REV TO 7-1-86 NCS	10 SLS INC. - DDC 5/97 18 6/23/11 S+B
3 REV TO 7-1-86 NCS	11 SLS INC. 2/23/98 JWM 19 5-4-13 H+S
4 REV TO 3-1-89 R.E.B.	12 SLS INC. 1/27/99 DSW 20 5/30/15 SBH
5 OGIS 3-19-92 T.L.	13 ES1 1/31/01 REK 21 7-19-17 SLS
6 OGIS 1/25/93 DSH	14 HBS 2/22/04 22
7 OGIS 12/11/93 SAJ	15 6-22-08 H+S 23
	16 6-21-09 H+S 24

KEY MAP

**TUCKER COUNTY**  
 STATE OF WEST VIRGINIA  
 Office of Assessor

DISTRICT **CLOVER**

SHEET NO: 220

Date, Aerial Photography: November, 1961 Date, Map: Dec., 1962  
 Photo No: Scale: 1" = 400'