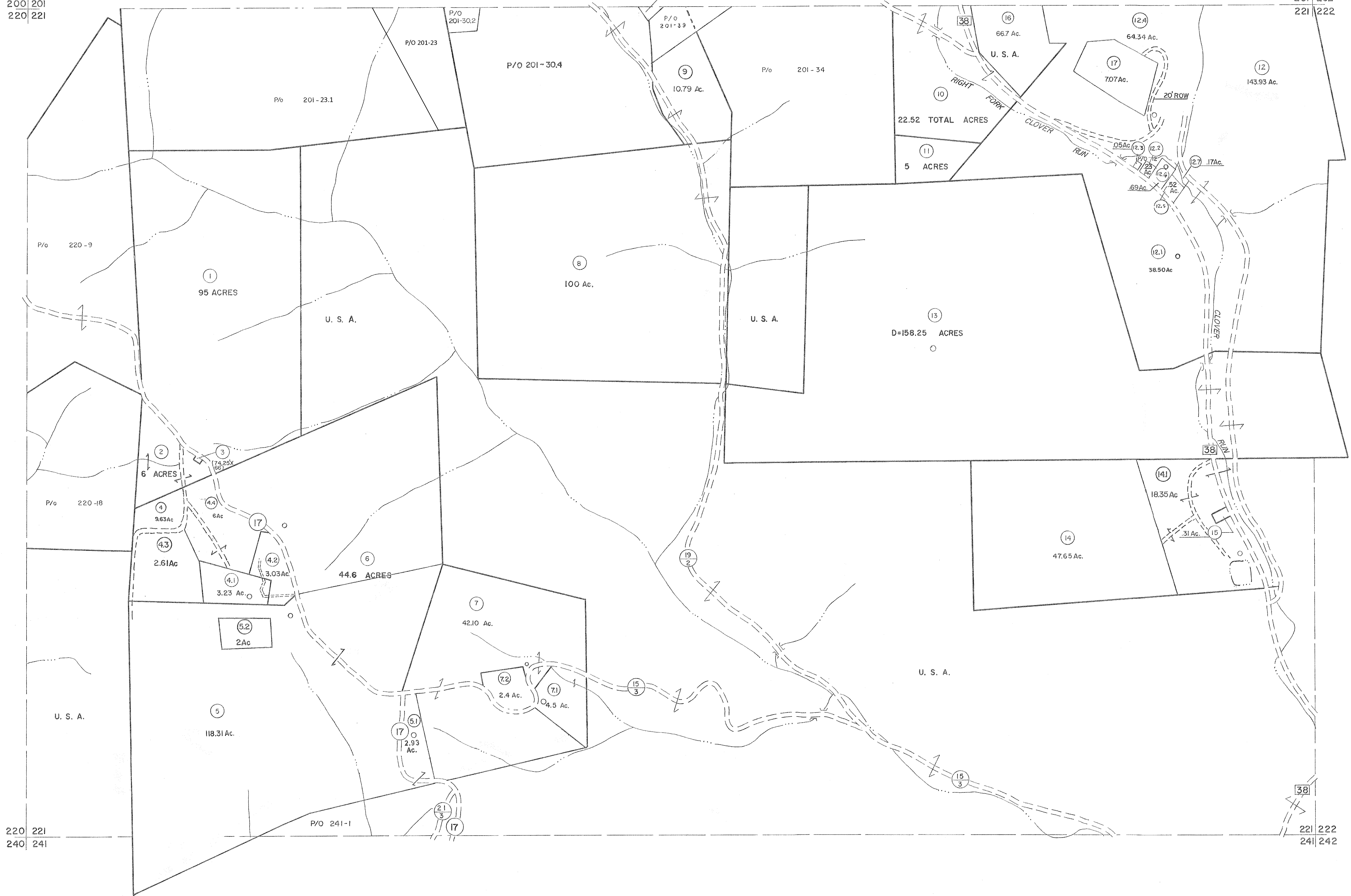


200 201
220 221

201 202
221 222



For Tax Purposes Only

Prepared by
MICHAEL BAKER, JR., INC.
Consulting Engineers
Rochester, Pennsylvania

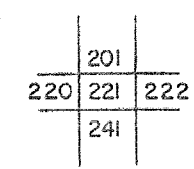
Legend

Property line	---	Original lot line	---
Edge of pavement or roadway	---	Deed lot number	(15)
Corporation line	---	Parcel or index number	(17)
District line	---	Improvement	○
County line	---	Railroad	—+—

Revisions

1	6-3-75	J.C.	9	OGIS	3-19-92	TL	17	6/23/11	S&H
2	11-20-78	D.G.	10	OGIS	1/25/93	DSH	18	5-4-13	H&S
3	11-20-78	DL	11	OGIS	12/11/93	SAJ	19	5/26/15	S&H
4	7-21-84	L.E.S.	12	SLS INC.	2/23/98	JWM	20	7-19-17	SLS
5	Revised to 7-1-85	DL	13	HBS	2/22/04		21	6-7-2017	Andrew Meador
6	Revised to 7-1-85	DL	14		6-22-08		22		
7	REV. TO 3-1-99	R.E.B.	15	C-21-09			23		
8	OGIS	12/31/90	DSH	5-B-10			24		

KEY MAP



TUCKER COUNTY
STATE OF WEST VIRGINIA
Office of Assessor

DISTRICT

CLOVER

SHEET NO: 221

Date, Aerial Photography: November, 1961 Date, Map: Dec., 1962
Photo No: Scale: 1" = 400'