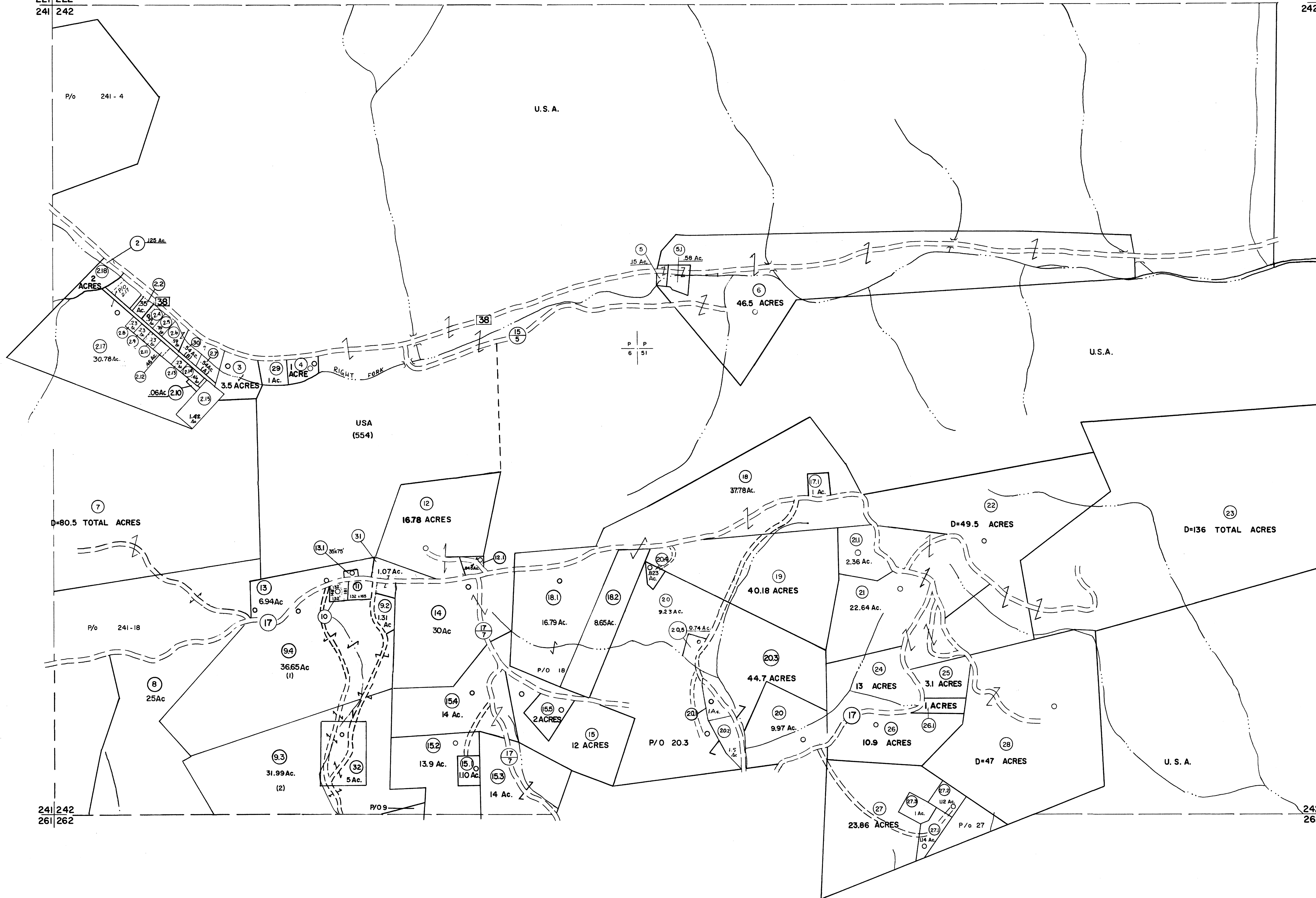


221 222
241 242

222 223
242 243



For Tax Purposes Only

Prepared by
MICHAEL BAKER, JR., INC.
Consulting Engineers
Rochester, Pennsylvania

Legend

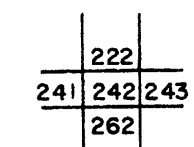
Property line ————
 Edge of pavement or roadway - - - - -
 Corporation line - - - - -
 District line - - - - -
 County line - - - - -

Original lot line - - - - -
 Deed lot number (15)
 Parcel or index number (22)
 Improvement (O)
 Railroad

Revisions

1	JUNE 75 PAM	9	OGIS	3-19-92	TL	17	ESI	2/8/02	REK
2	11-21-78	OG	OGIS	1/25/93	DSH	18	HBS	2/22/04	
3	Revised to 7-1-88		OGIS	12/11/93	SAJ	19		3/24/07	SBH
4	7-1-84	LES	O.G.I.S	4-1-96	J.E.B	20		5-8-10	H.S
5	Revised to 7-1-85		SLS INC.	DDC	5/97	21		6/23/11	SBH
6	REV. TO 7-1-86	NCS	SLS INC.	2/23/98	JWM	22		5-4-13	H.S
7	REV. TO 3-1-89	R.E.B	SLS INC.	1/27/99	D.S.W	23		5/30/15	SBH
8	OGIS	12/31/90	DSH	1/31/01	REK	24		7-19-17	S.L.S

KEY MAP



TUCKER COUNTY
 STATE OF WEST VIRGINIA
 Office of Assessor

DISTRICT

CLOVER

SHEET NO: 242

Date, Aerial Photography: November, 1961 Date, Map: Dec, 1962
Photo No: Scale: 1" = 400'