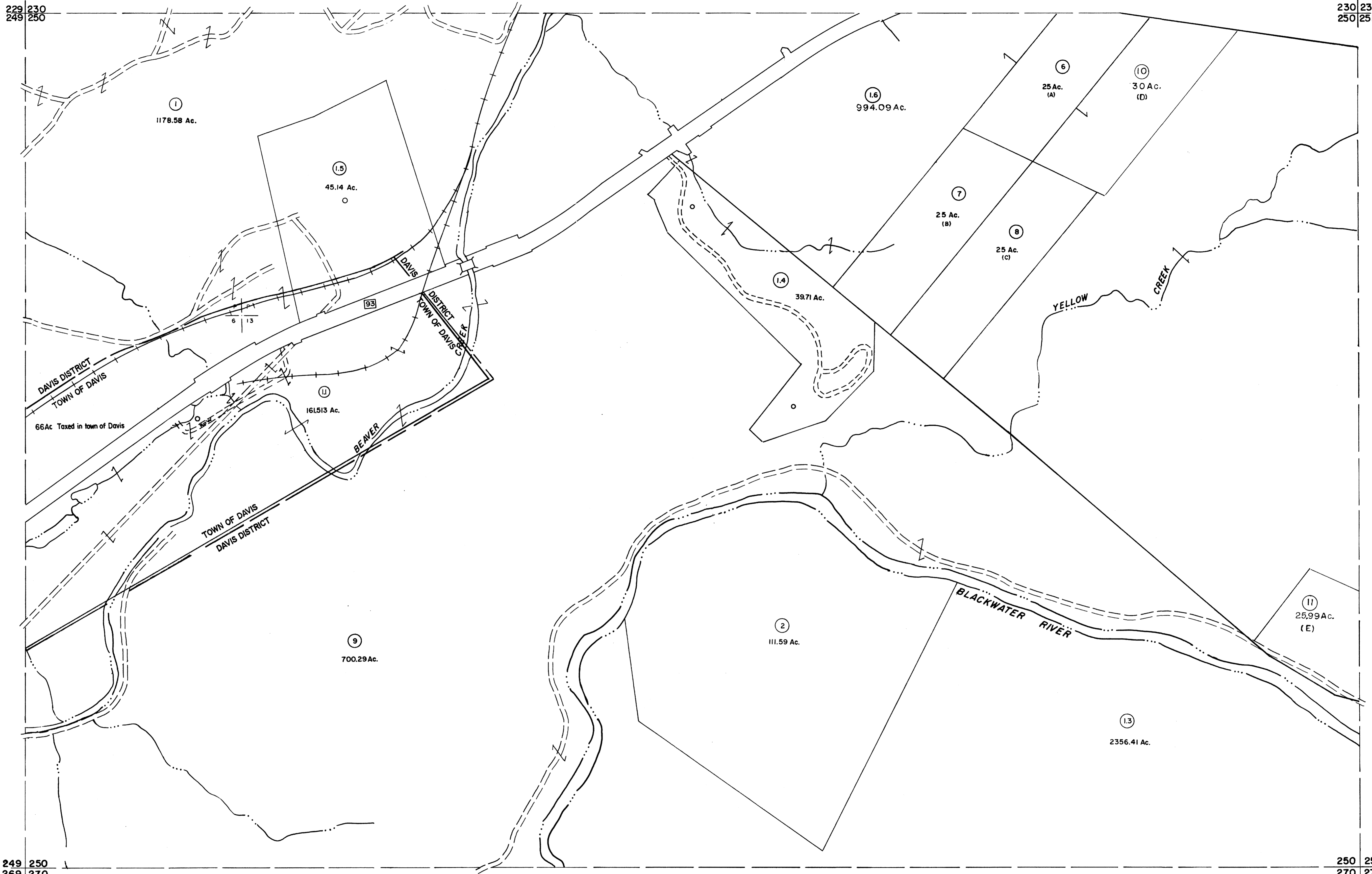


229 230
249 250

230 231
250 251



249 250
269 270

250 251
270 271

For Tax Purposes Only

Prepared by
MICHAEL BAKER, JR., INC.
Consulting Engineers
Rochester, Pennsylvania

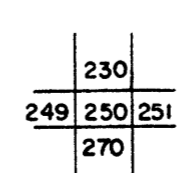
Legend

Property line	—	Original lot line	—
Edge of pavement or roadway	—	Deed lot number	(15)
Corporation line	—	Parcel or index number	(2)
District line	—	Improvement	○
County line	—	Railroad	—

Revisions

1	Revised 6-7-89	9	6-22-02	HAS	17
2	REV. TO 3-1-89	10	5-8-10	HAS	18
3	SLS INC. 2/23/98	11	6/24/11	SBH	19
4	SLS INC. 3/2/00	12	5/29/15	SBH	20
5	HBS 2/19/04	13	8-8-17	SLS	21
6	3/21/05	14			22
7	3/28/06	15			23
8	3/24/07	16			24

KEY MAP



TUCKER COUNTY
STATE OF WEST VIRGINIA
Office of Assessor

DISTRICT

DAVIS

SHEET NO: 250

Date, Aerial Photography: Nov. 1961
Photo No: _____
Date, Map: Dec. 1962
Scale: 1" = 400'