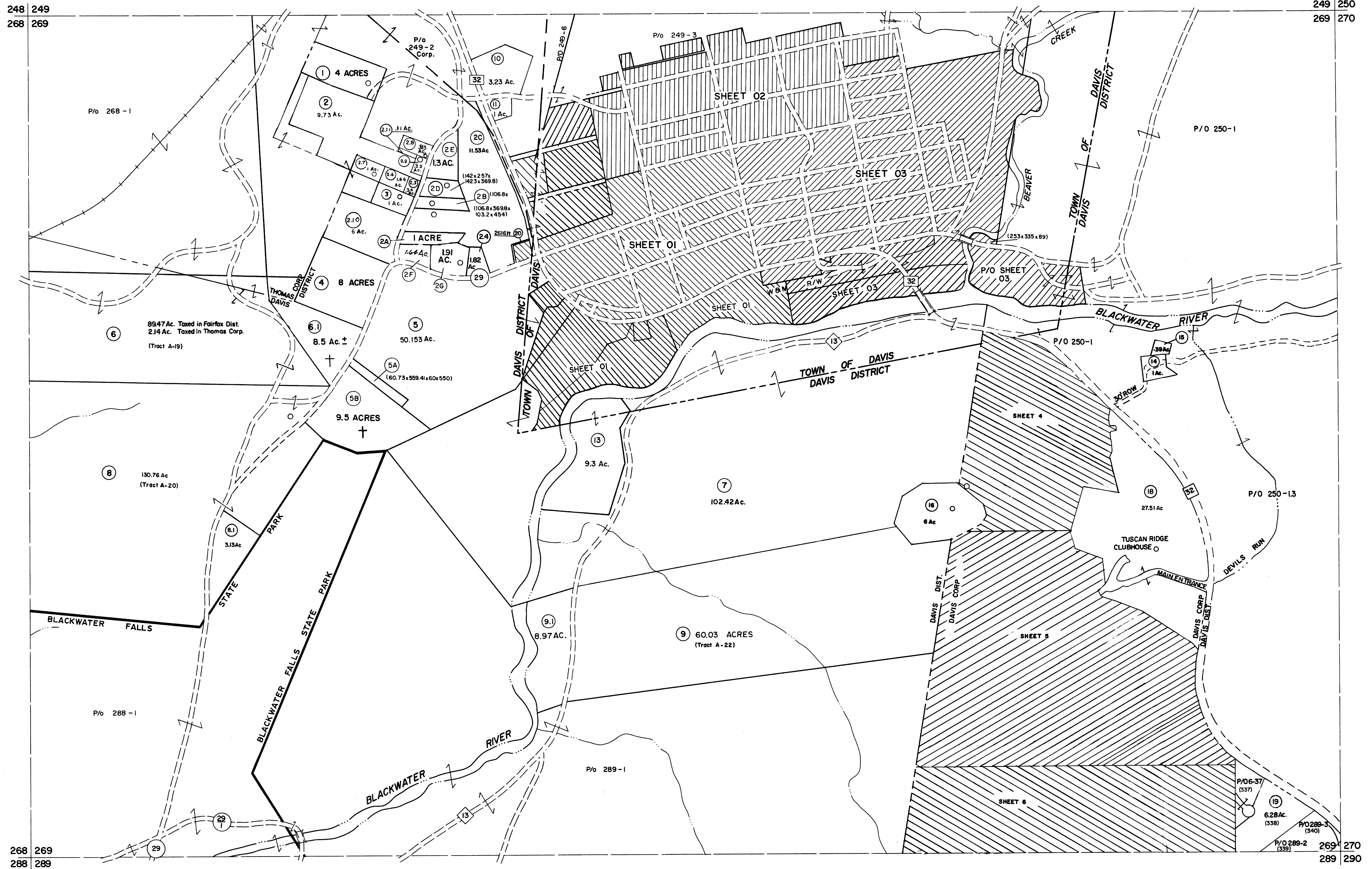


248 249  
268 269

249 250  
269 270



For Tax Purposes Only

Prepared by  
MICHAEL BAKER, JR., INC.  
Consulting Engineers  
Rochester, Pennsylvania

Legend	
Property line	Original lot line
Edge of pavement or roadway	Dead lot number
Corporation line	Parcel or index number
District line	Improvement
County line	Railroad

Revisions			
1	10-3-63	9	OGIS 1/27/93 DSH
2	11-78 BAH	10	OGIS 2-95 HD
3	12-1-88	11	O.G.I.S 4-1-96 J.E.B
4	1-1-88	12	SLS INC. - DDC 5/97
5	July, 1986	13	SLS INC. 2/23/98 JWM
6	REV. TO 3-1-89	14	SLS INC. 1/27/99 DSW
7	OGIS 1/1/91	15	SLS INC. 3/2/00 JWM
8		16	E.S.I 1/31/01 REK

KEY MAP			
5-4-13-11-15	5/28/15	SBH	
8-7-17		SLS	

TUCKER COUNTY  
STATE OF WEST VIRGINIA  
Office of Assessor

DISTRICT	
DAVIS	
SHEET NO: 269	
Date, Aerial Photography: November, 1961	Date, Map: Dec., 1962
Photo No:	Scale: 1" = 400'