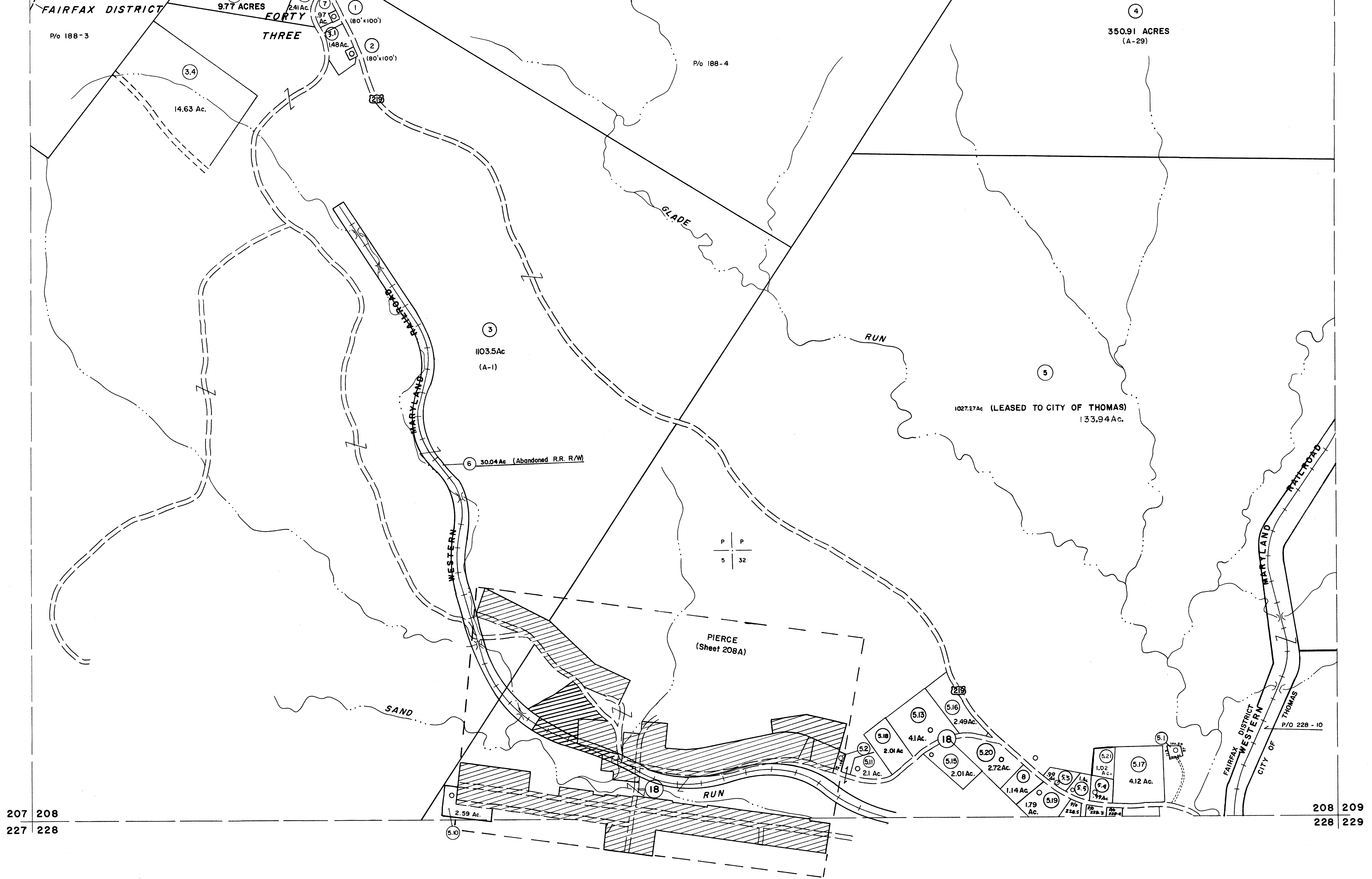


187 188
207 208

188 189
208 209



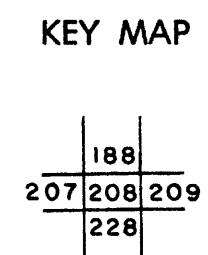
207 208
227 228

208 209
228 229

For Tax Purposes Only
Prepared by
MICHAEL BAKER, JR., INC.
Consulting Engineers
Rochester, Pennsylvania

Legend	
Property line	—————
Edge of pavement or roadway	———
Corporation line	-----
District line	-----
County line	-----
Original lot line	-----
Deed lot number	(15)
Parcel or index number	(20)
Improvement	○
Railroad	—+—

Revisions								
1	JUNE 75	PAM	9	SLS INC. 2/23/98	JWM	17	3/28/06	SBH
2	11/20/78	DG	10	SLS INC. 1/27/99	DSW	18	6-22-08	TT 4.5
3	REV. TO 7-1-86	NCS	11	SLS INC. 3/1/00	JWM	19	6-21-09	TT 4.5
4	REV. TO 3-1-89	REB.	12	ESI 1/31/01	REK	20	5-8-10	TT 4.5
5	OGIS 3-19-92	TL	13	ESI 2/7/02	REK	21	6/23/11	SBH
6	OGIS 2-95	HD	14	ESI 2/20/03	REK	22	5-4-13	TT 4.5
7	O.G.I.S 4-1-96	J.E.B	15	H&S 2/22/04		23	5/26/15	SBH
8	SLS INC. - DDC 5/97		16	SBH 3/21/05		24	8-3-17	SLS



TUCKER COUNTY
STATE OF WEST VIRGINIA
Office of Assessor

DISTRICT	FAIRFAX
SHEET NO:	208
Date, Aerial Photography:	Nov., 1961
Photo No:	
Date, Map:	Dec., 1962
Scale:	1" = 400'