

227 228  
247 248

228 229  
248 249

P/O 227-2

P/O 208-5

P/O 208-5

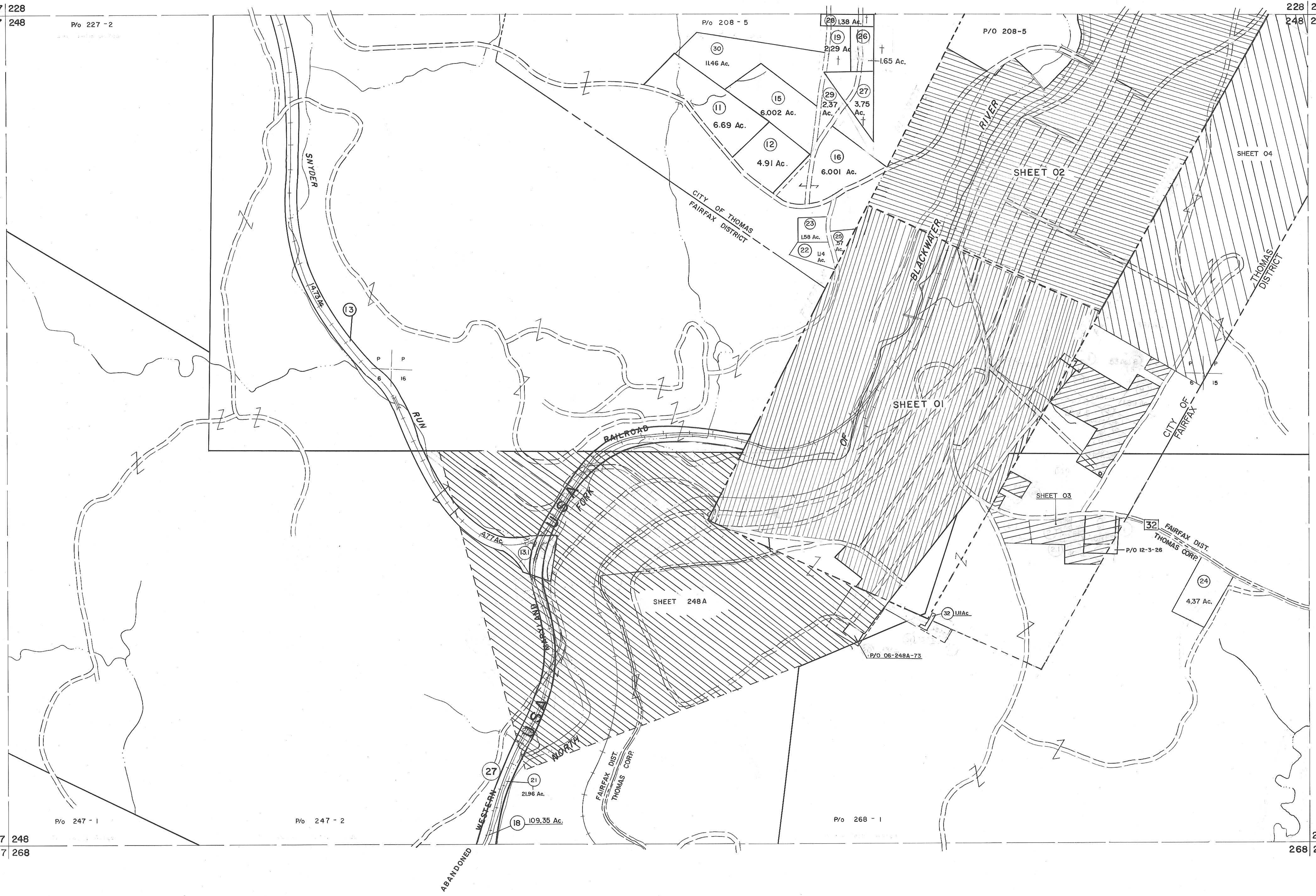
P/O 247-1

P/O 247-2

P/O 268-1

247 248  
267 268

249  
268 269



For Tax Purposes Only  
Prepared by  
**MICHAEL BAKER, JR., INC.**  
Consulting Engineers  
Rochester, Pennsylvania

Legend	
Property line	—————
Edge of pavement or roadway	- - - - -
Corporation line	—————
District line	—————
County line	—————
Original lot line	-----
Dead lot number	(15)
Parcel or index number	(29)
Improvement	○
Railroad	—————

Revisions									
1	11-27-78	T.G.	9	O.G.I.S.	4-1-96	J.E.B.	17	6-22-02	11-4-5
2	Revised to 7-1-85	J.P.	10	SLS INC.	- DDC	5/97	18	6-21-09	11-4-5
3	REV. TO 7-1-86	NCS	11	SLS INC.	- DDC	7/97	19	5-4-13	11-4-5
4	REV. TO 3-1-89	R.E.B.	12	SLS INC.	2/23/98	J.W.M.	20		
5	OGIS 1/1/91	DSH	13	SLS INC.	1/27/99	DSW	21		
6	OGIS 3-19-92	TL	14	SLS INC.	3/1/00	J.W.M.	22		
7	OGIS 1/25/93	DSH	15	ESI	2/8/02	REK	23		
8	OGIS 2-95	HD	16	3/21/05		S.B.H.	24		

KEY MAP  
228  
247 248 249  
268

**TUCKER COUNTY**  
STATE OF WEST VIRGINIA  
Office of Assessor

DISTRICT  
**FAIRFAX - DAVIS**  
SHEET NO: 248  
Date, Aerial Photography: November, 1961 Date, Map: Dec. 1962  
Photo No: Scale: 1" = 400'