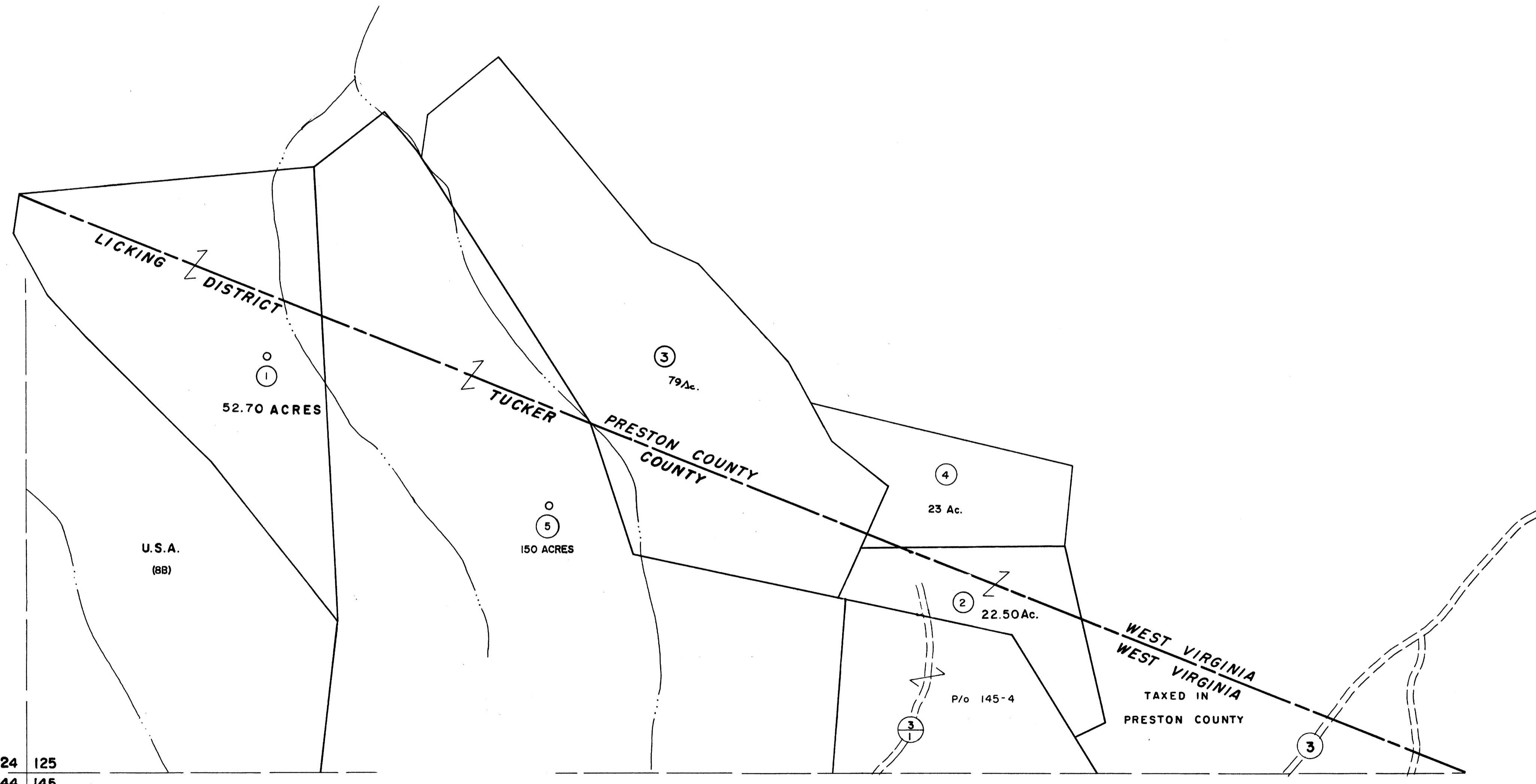


124 | 125

125 |



124 | 125  
144 | 145

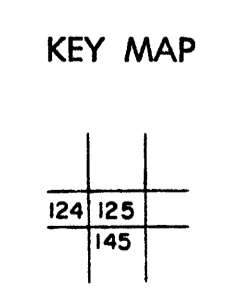
125 | 146  
145 | 146

For Tax Purposes Only

Prepared by  
MICHAEL BAKER, JR., INC.  
Consulting Engineers  
Rochester, Pennsylvania

| Legend                      |                        |
|-----------------------------|------------------------|
| Property line               | Original lot line      |
| Edge of pavement or roadway | Deed lot number        |
| Corporation line            | Parcel or index number |
| District line               | Improvement            |
| County line                 | Railroad               |

| Revisions |                 |        |    |
|-----------|-----------------|--------|----|
| 1         | 11/16/78        | DG     | 9  |
| 2         | Revised 7-88    | IF     | 10 |
| 3         | 7-1-84          | L.E.S. | 11 |
| 4         | Revised 12-1-87 | DSH    | 12 |
| 5         | OGIS 12/29/90   | DSH    | 13 |
| 6         | OGIS 1/23/93    | DSH    | 14 |
| 7         | OGIS 12/9/93    | SAJ    | 15 |
| 8         |                 |        | 16 |



**TUCKER COUNTY**  
STATE OF WEST VIRGINIA  
Office of Assessor

DISTRICT **LICKING**

**SHEET NO: 125**

Date, Aerial Photography: November, 1961 Date, Map: Dec, 1962  
Photo No: Scale: 1" = 400'