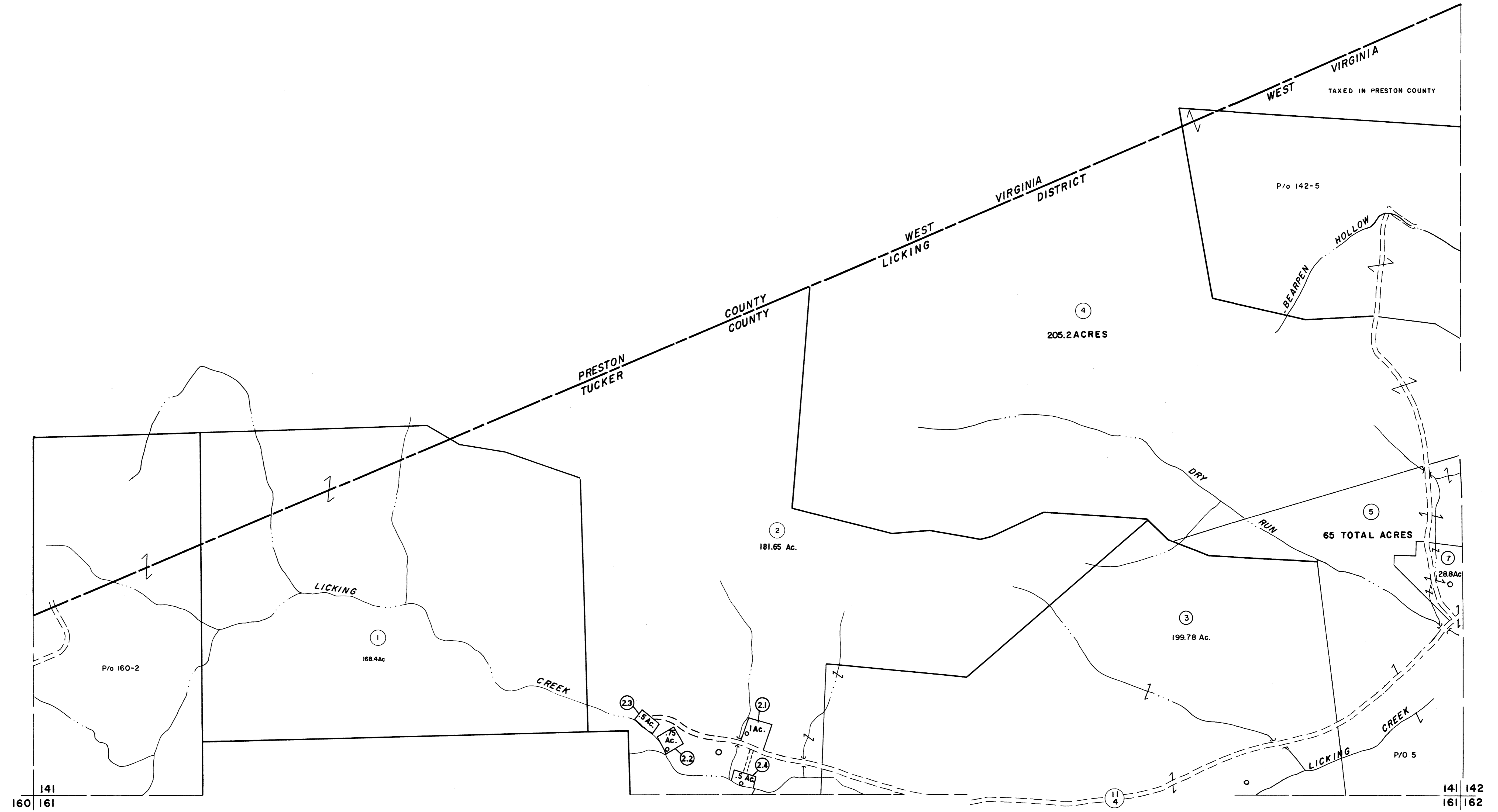


141

122  
141 142



For Tax Purposes Only

Prepared by  
MICHAEL BAKER, JR., INC.  
Consulting Engineers  
Rochester, Pennsylvania

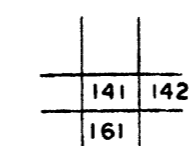
Legend

Property line	—————	Original lot line	-----
Edge of pavement or roadway	-----	Deed lot number	(15)
Corporation line	-----	Parcel or index number	(99)
District line	-----	Improvement	o
County line	-----	Railroad	+

Revisions

Revision	Date	Description	By	Check
1	7-1-84	L.E.S.	10	17
2	REV. TO 7-1-86	NCS	11	18
3	OGIS 12-29-90	DSH	12	19
4	OGIS 3-19-92	TL	13	20
5	OGIS 4-95	HD	14	21
6	7/3/11	SBH	15	22
7	5-4-13	TT	16	23
8				24

KEY MAP



TUCKER COUNTY  
STATE OF WEST VIRGINIA  
Office of Assessor

DISTRICT

LICKING

SHEET NO: 141

Date, Aerial Photography: November, 1961 Date, Map: Dec., 1962  
Photo No: Scale: 1" = 400'