

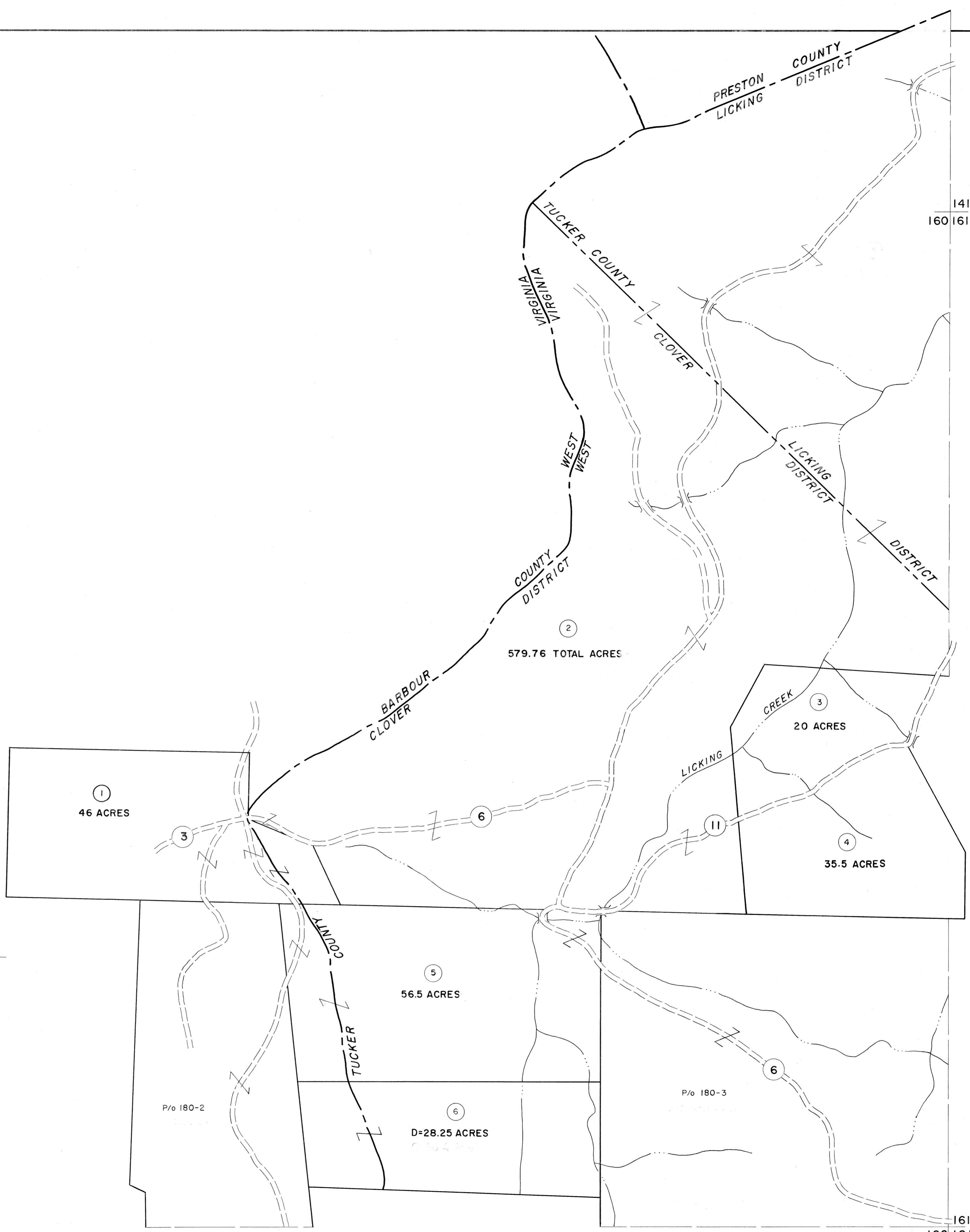
160

141
160 161

P
4 12

160
180

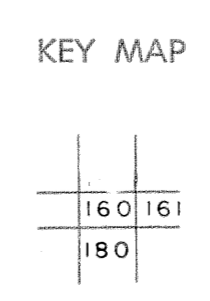
161
180 181



For Tax Purposes Only
 Prepared by
MICHAEL BAKER, JR., INC.
Consulting Engineers
 Rochester, Pennsylvania

| Legend | |
|-----------------------------|------|
| Property line | — |
| Edge of pavement or roadway | — |
| Corporation line | — |
| District line | — |
| County line | — |
| Original lot line | — |
| Deed lot number | (15) |
| Parcel or index number | (99) |
| Improvement | o |
| Railroad | — |

| Revisions | | |
|-----------|-------------------|----|
| 1 | REVISED TO 7-1-83 | 9 |
| 2 | OGIS 12/30/90 DSH | 10 |
| 3 | OGIS 3-19-92 TL | 11 |
| 4 | 3/24/07 SBH | 12 |
| 5 | | 13 |
| 6 | | 14 |
| 7 | | 15 |
| 8 | | 16 |
| 9 | | 17 |
| 10 | | 18 |
| 11 | | 19 |
| 12 | | 20 |
| 13 | | 21 |
| 14 | | 22 |
| 15 | | 23 |
| 16 | | 24 |



TUCKER COUNTY
 STATE OF WEST VIRGINIA
 Office of Assessor

DISTRICT **LICKING CLOVER**
SHEET NO: 160
 Date, Aerial Photography: November, 1961 Date, Map: Dec. 1962
 Photo No: Scale: 1" = 400'