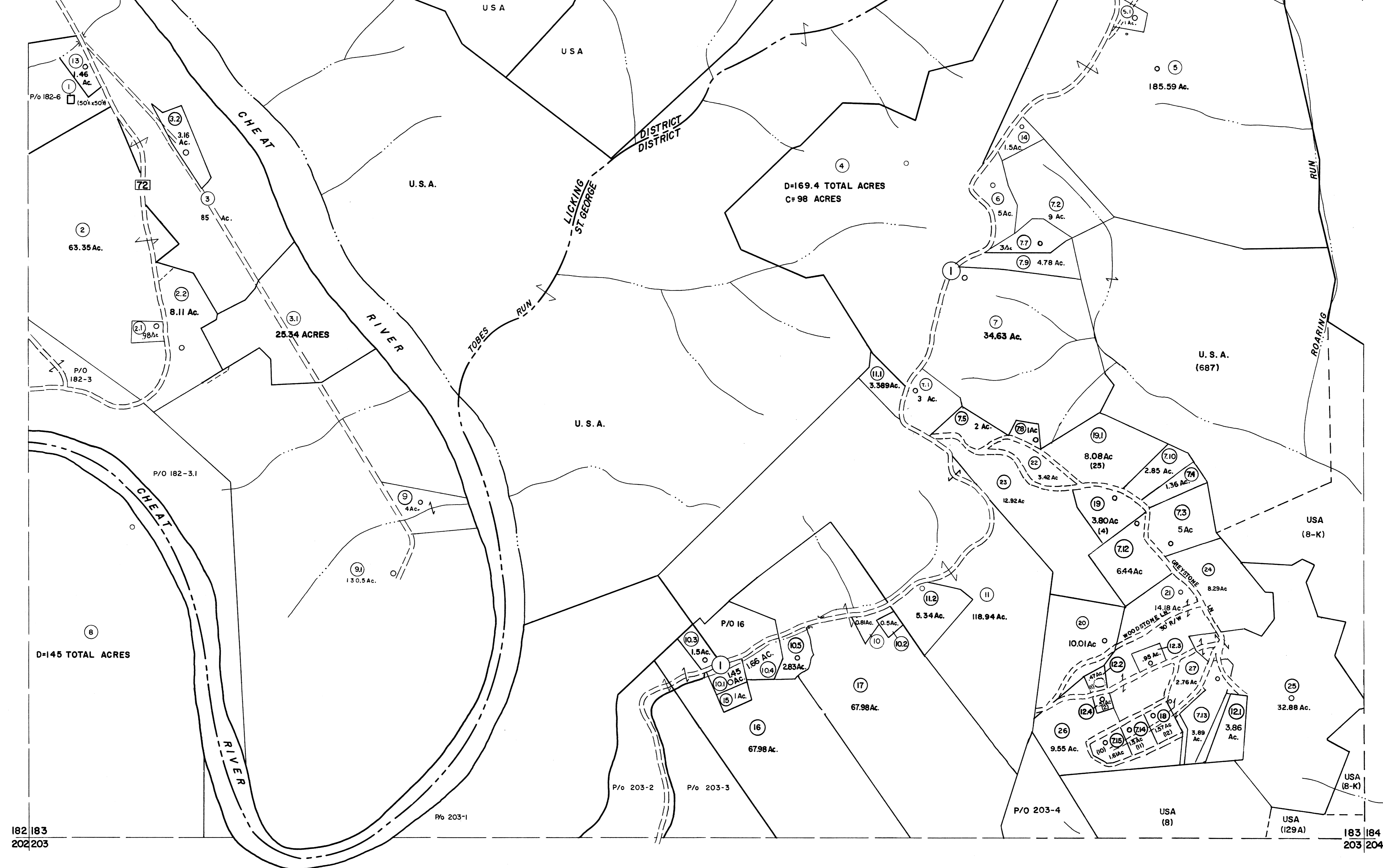


162 | 163
182 | 183

163 | 164
183 | 184



182 | 183
202 | 203

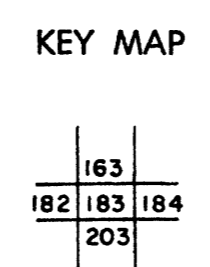
183 | 184
203 | 204

For Tax Purposes Only

Prepared by
MICHAEL BAKER, JR., INC.
 Consulting Engineers
 Rochester, Pennsylvania

Legend	
Property line	—
Edge of pavement or roadway	- - - -
Corporation line	— · — · —
District line	- - - -
County line	- - - -
Original lot line	- - - -
Dead lot number	(15)
Parcel or index number	(20)
Improvement	○
Railroad	—+—+—+—

Revisions					
1	6-6-75	JC	9	OGIS 3-19-92	TL
2	11/20/78	DG	10	OGIS 1/24/93	DSH
3	7-1-83	C.R.	11	OGIS 12/11/93	SAJ
4	7-1-84	L.E.S.	12	SLS INC. 2/19/98	DSW
5	REV TO 7-1-86	NCS	13	HBS 2/22/04	21
6	REV TO 7-1-87	DD	14	3/21/05	S&H
7	REV TO 3-1-89	NCS	15	3/24/07	S&H
8	OGIS 12/30/90	DSH	16	5-8-10	H&S



TUCKER COUNTY
 STATE OF WEST VIRGINIA
 Office of Assessor

DISTRICT **LICKING ST. GEORGE**

SHEET NO: 183

Date, Aerial Photography: Nov., 1961 Date, Map: Dec., 1962
 Photo No. Scale: 1" = 400'