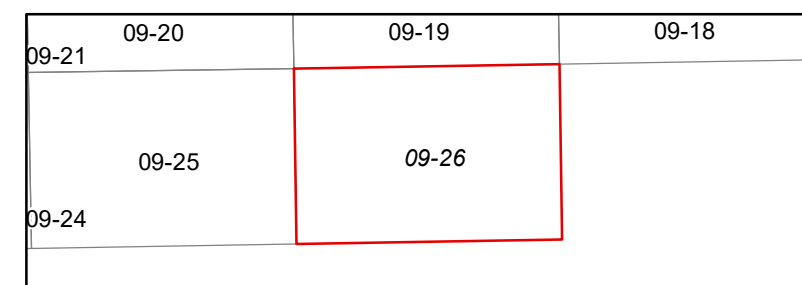


**FOR TAX PURPOSES ONLY**  
 Prepared By  
 Barbour County Assessor's Office  
 Philippi, West Virginia

This tax map was compiled for the purpose of taxation from available record evidence and has not been field verified. This map is not a valid survey plat and the data on the map does not imply any official status to such data. The State of West Virginia and the Barbour County Assessor's Office assume no liability that might result from the use of this map.

**Legend**  
 Property Line ——— Original Lot Line  
 Road Right of Way ——— Lot Number (15)  
 Corporation Line ——— Parcel Number (99)  
 District Line ——— Water  
 County Line ——— Railroad



**BARBOUR COUNTY**  
**WEST VIRGINIA**  
 Office of Assessor



**PLEASANT DISTRICT**  
 Map: 26  
 Date, Aerial Photography: 2010  
 Date, Map: 2/6/2024  
 Scale: 1" = 400'