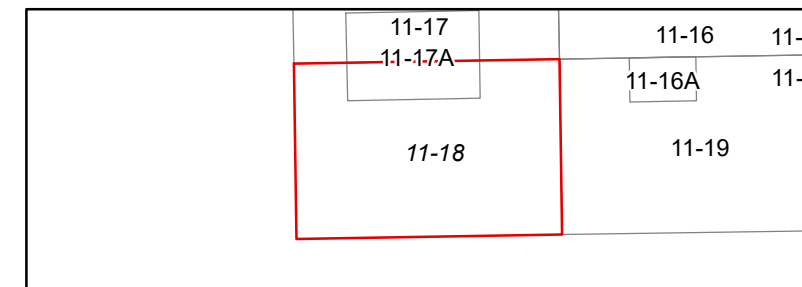


FOR TAX PURPOSES ONLY  
 Prepared By  
 Barbour County Assessor's Office  
 Philippi, West Virginia

This tax map was compiled for the purpose of taxation from available record evidence and has not been field verified. This map is not a valid survey plat and the data on the map does not imply any official status to such data. The State of West Virginia and the Barbour County Assessor's Office assume no liability that might result from the use of this map.

**Legend**  
 Property Line  
 Road Right of Way  
 Corporation Line  
 District Line  
 County Line  
 Original Lot Line  
 Lot Number  
 Parcel Number  
 Water  
 Railroad  
 (15)  
 (99)



**BARBOUR COUNTY  
 WEST VIRGINIA**  
 Office of Assessor



VALLEY DISTRICT  
 Map: 18  
 Date, Aerial Photography: 2010  
 Date, Map: 2/6/2024  
 Scale: 1" = 400'