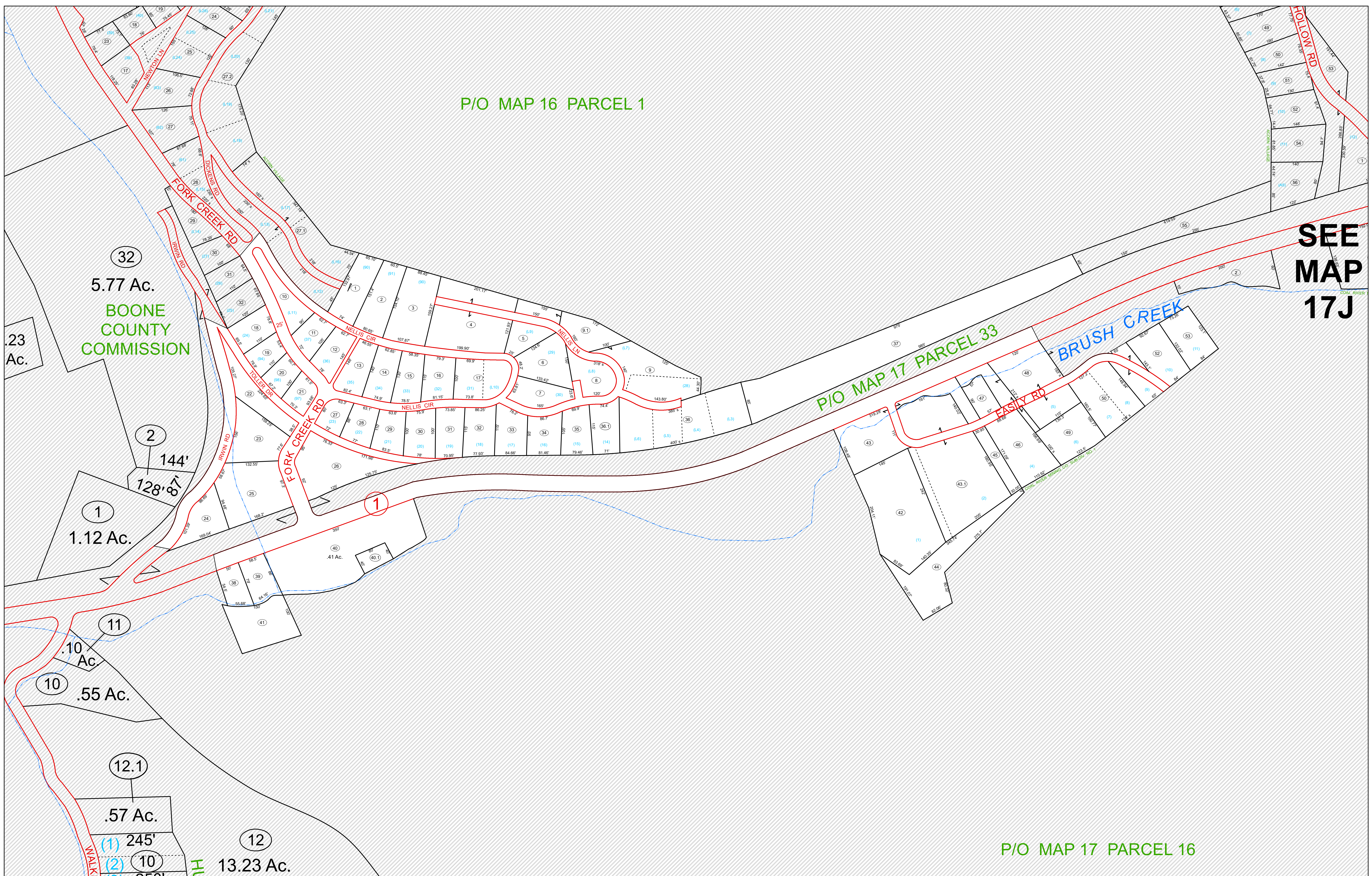


P/O MAP 16 PARCEL 1

SEE
MAP
17J

P/O MAP 17 PARCEL 33

P/O MAP 17 PARCEL 16



32
5.77 Ac.
BOONE
COUNTY
COMMISSION

.23
Ac.

2
144'
128' 6"

1
1.12 Ac.

11
.10
Ac.

10
.55 Ac.

12.1

.57 Ac.

(1) 245'
(2) 10
(3) 250'

12
13.23 Ac.

LEGEND

- Water
- Property
- Road Right of Way
- Railroad Right of Way
- Interior Lot Line
- Rail and Road ROW
- District Line

- Deed lot Number (15)
- Improvement (O)
- Parcel or Index Number (9)
- Parcel Hook (L)

REVISIONS

- 1
- 2
- 3
- 4
- 5
- 6
- 7

RESTRICTION

All tax maps created under the provisions of reappraisal legislation are the property of the Assessor of Boone County, West Virginia and the reproduction, copying, modification, distribution or sale of such tax maps or any copies thereof without the written permission of the Boone County Assessor is prohibited by law

KEY MAP

17F	17J
17G	17J

BOONE COUNTY
STATE OF WEST VIRGINIA
Office of Assessor

MAP No. 17G **PEYTONA**

Date, Aerial Photography: 1960 Date, Map: 10-31-63
Photo No: _____ Scale: 1" = 100'

For Tax Purposes Only
Prepared by
L.R. Kimball
ARCHITECTURE - ENGINEERING - COMMUNICATIONS TECHNOLOGY