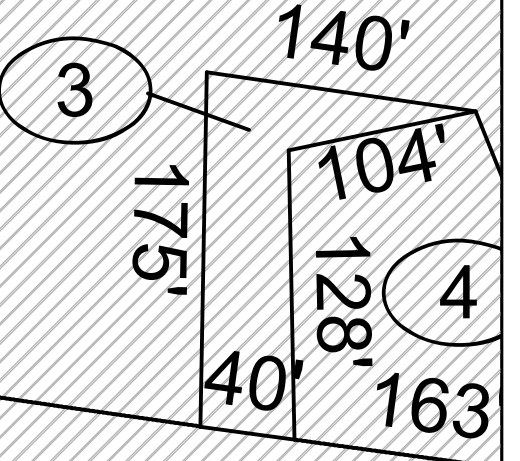


EL 1



SEE MAP 17G

PIO MAP 17 PARCEL 33

BRUSH CREEK

SEE MAP 17F

SEE MAP 17H

RIDGEVIEW NELLIS RD

JOHN SHOLTON RD

EASTLY RD

For Tax Purposes Only
Prepared by
L.R. Kimball
ARCHITECTURE-ENGINEERING-COMMUNICATIONS TECHNOLOGY

LEGEND	
	Water
	Property
	Road Right of Way
	Railroad Right of Way
	Interior Lot Line
	Rail and Road ROW
	District Line
	Deed lot Number (15)
	Improvement Parcel or Index Number (9)
	Parcel Hook

REVISIONS	
1	
2	
3	
4	
5	
6	
7	

RESTRICTION
All tax maps created under the provisions of reappraisal legislation are the property of the Assessor of Boone County, West Virginia and the reproduction, copying, modification, distribution or sale of such tax maps or any copies thereof without the written permission of the Boone County Assessor is prohibited by law

KEY MAP	
	17H
17G	17J

BOONE COUNTY
STATE OF WEST VIRGINIA
Office of Assessor

MAP No. **17J** **PEYTONA**
Date, Aerial Photography: 1960 Date, Map: 10-31-63
Photo No: _____ Scale: 1" = 100'