

P/O 35-5

P/O 35-5

03-35-5

GRANT

03-40-1

P/O 40-1

LEATHER

LAUREL FORK

LILLY FORK

FRANKS BRANCH

SUGARCAMP RUN

CLAY COUNTY
NICHOLAS COUNTY

CLAY COUNTY
MERCER'S COUNTY

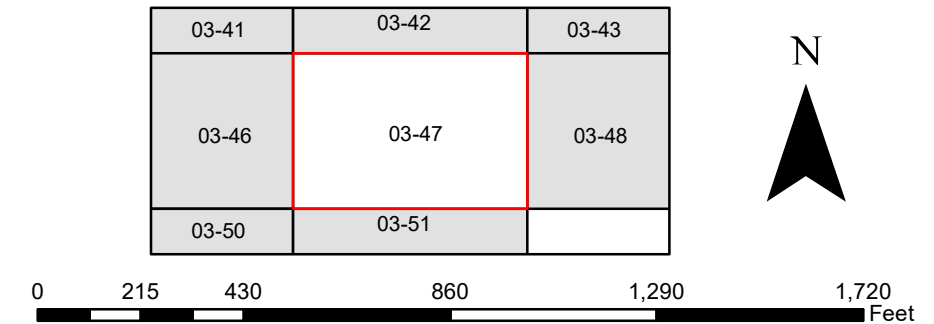
FOR TAX PURPOSES ONLY
Prepared By
Clay County Assessor's Office
Clay, West Virginia

This tax map was compiled for the purpose of taxation from available record evidence and has not been field verified. This map is not a valid survey plat and the data on the map does not imply any official status to such data. The State of West Virginia and the Clay County Assessor's Office assume no liability that might result from the use of this map.

Legend	
Property Line	Original Lot Line
Road Right of Way	Lot Number
Corporation Line	Parcel Number
District Line	Water
County Line	Railroad

Revisions	Revised 03/31/2021			
	Revised 01/25/2022			
	Revised 01/25/2023			
	Revised 01/16/2024			

CLAY COUNTY WEST VIRGINIA Office of Assessor



HENRY
Map: 47
Date, Aerial Photography: 2019
Date, Map: 1/16/2024
Scale: 1" = 400'