

FOR TAX PURPOSES ONLY
 Prepared By
 Clay County Assessor's Office
 Clay, West Virginia

This tax map was compiled for the purpose of taxation from available record evidence and has not been field verified. This map is not a valid survey plat and the data on the map does not imply any official status to such data. The State of West Virginia and the Clay County Assessor's Office assume no liability that might result from the use of this map.

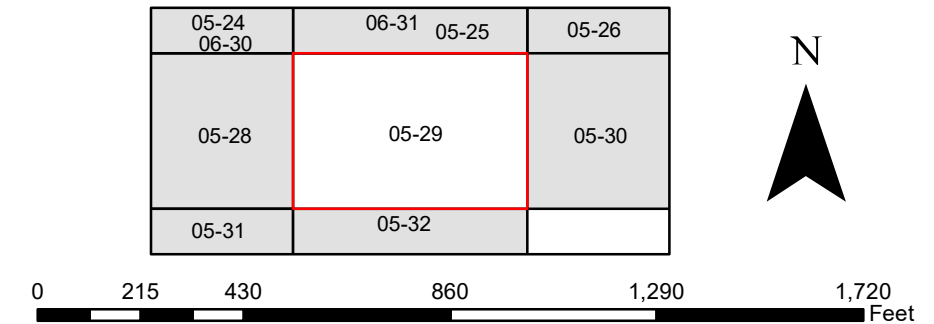
Legend

Property Line	Original Lot Line	(15)
Road Right of Way	Lot Number	(99)
Corporation Line	Parcel Number	
District Line	Water	
County Line	Railroad	

Revisions

Revised 03/31/2021			
Revised 01/25/2022			
Revised 01/25/2023			
Revised 01/16/2024			

CLAY COUNTY WEST VIRGINIA Office of Assessor



PLEASANT
 Map: 29
 Date, Aerial Photography: 2019
 Date, Map: 1/16/2024
 Scale: 1" = 400'