

SEE KANAWHA COUNTY

ELK RIVER

HARTS BRANCH

CLAY COUNTY KANAWHA COUNTY

UNION DISTRICT

JEEP TRAIL

QUEEN

QUEEN

QUEEN

FOR TAX PURPOSES ONLY
Prepared By
Clay County Assessor's Office
Clay, West Virginia

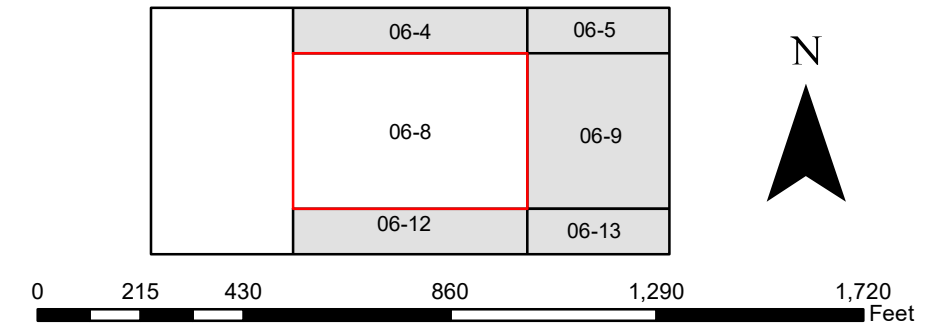
This tax map was compiled for the purpose of taxation from available record evidence and has not been field verified. This map does not imply any official status to such data. The State of West Virginia and the Clay County Assessor's Office assume no liability that might result from the use of this map.

Legend	
Property Line	Original Lot Line
Road Right of Way	Lot Number
Corporation Line	Parcel Number
District Line	Water
County Line	Railroad

Revised	03/31/2021		
Revised	01/25/2022		
Revised	01/25/2023		
Revised	01/16/2024		

CLAY COUNTY WEST VIRGINIA

Office of Assessor



UNION
Map: 8
Date, Aerial Photography: 2019
Date, Map: 1/16/2024
Scale: 1" = 400'