

SEE MAP 16

SEE MAP 16

Prepared By  
The Office Of The  
**Fayette County Assessor**  
100 Church Street  
Fayetteville, WV 25840  
**FOR TAX PURPOSES ONLY**

**DISCLAIMER**

This product is for tax purposes only and was not prepared for, nor is it suitable for, legal, engineering, or surveying purposes. Users of this information should review individual parcel records including deeds, survey maps or plats, and legal property descriptions for definitive parcel location information. This map is not a valid survey plat and the data on this map does not imply any official status to such data. The State of West Virginia and county assessor's office assume no liability that might result from the use of this map.

**LEGEND**

Property Line	—	Deed Lot Number	(15)
Roadway	— — — — —	Parcel or Index Number	Ⓜ
Water	~ ~ ~ ~ ~	Improvement	○
District/Corporation Line	— · — · — ·	Railroad	— + — + — +
County Line	— · — · — ·	Scaled Dimension	123s
Land Hook	— Z —	Deeded Acreage	12.34Ac.
Original Lot Line/Interior Tract	- - - - -	Calculated Area	12.34Ac.(C)

**REVISIONS**

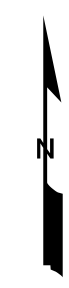
**RESTRICTIONS**

**MAP KEY**

02-9J	02-9K	02-9L
02-9N	02-9P	02-9R
02-16A	02-16B	
02-16E		02-16G
02-16K	02-16L	

All tax maps created under the provisions of reappraisal legislation are the property of the Assessor of Fayette County, West Virginia and the reproduction, copying, modification, distribution, or sale of such tax maps or any copies thereof without the written permission of the Fayette County Assessor is prohibited by law.

STATE OF WEST VIRGINIA  
**FAYETTE COUNTY**  
FAYETTEVILLE, WEST VIRGINIA  
Coordinate System: NAD 1983, WV State Plane South



**PLATEAU DISTRICT MAP 16B**  
Map Date: 11/01/2016  
Scale: 1inch = 100 feet