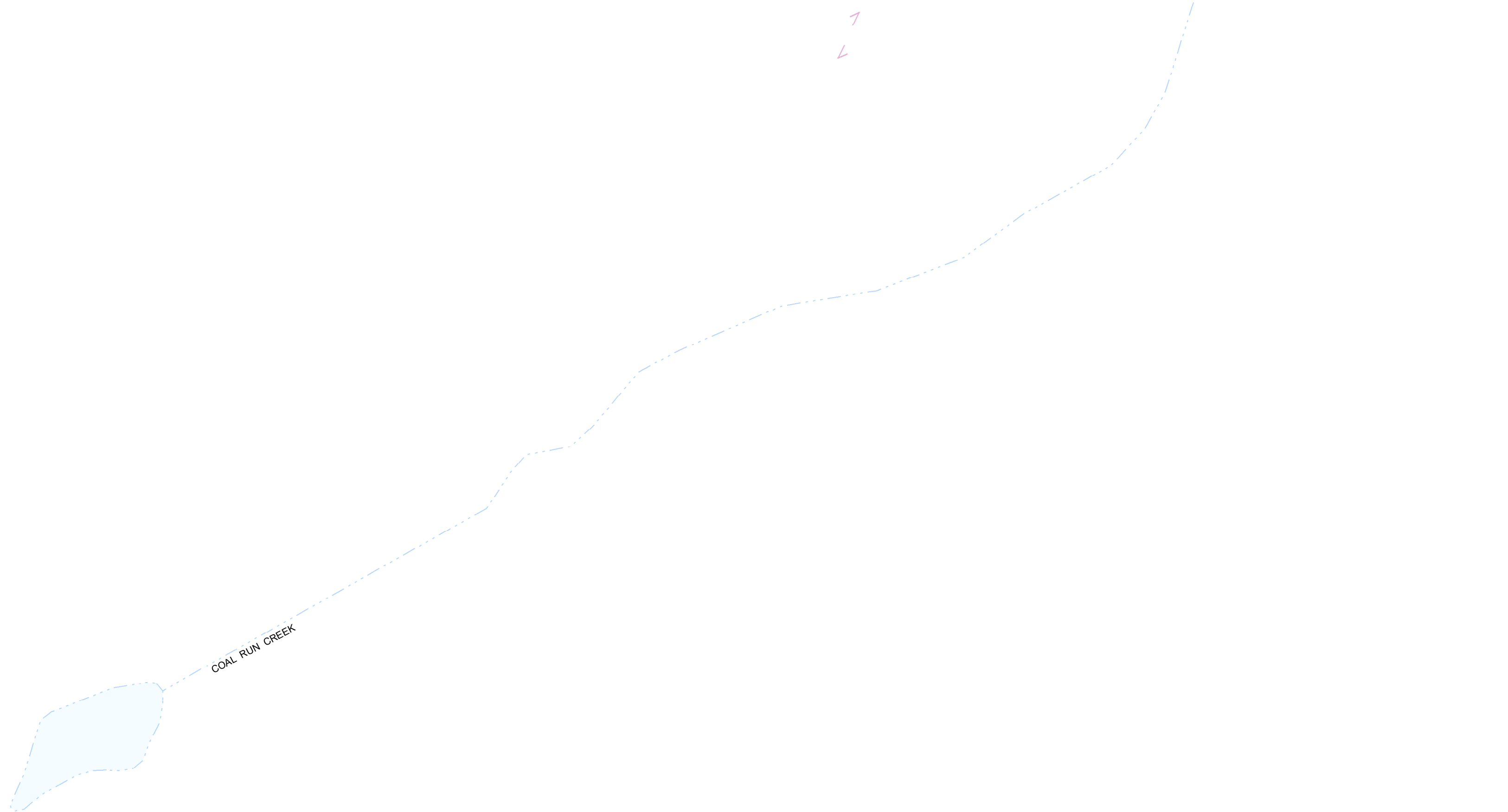


SEE MAP 16



Prepared By  
The Office Of The  
**Fayette County Assessor**  
100 Church Street  
Fayetteville, WV 25840  
**FOR TAX PURPOSES ONLY**

**DISCLAIMER**  
This product is for tax purposes only and was not prepared for, nor is it suitable for, legal, engineering, or surveying purposes. Users of this information should review individual parcel records including deeds, survey maps or plats, and legal property descriptions for definitive parcel location information. This map is not a valid survey plat and the data on this map does not imply any official status to such data. The State of West Virginia and county assessor's office assume no liability that might result from the use of this map.

**LEGEND**

Property Line	—
Roadway	— — — —
Water	~ ~ ~ ~
District/Corporation Line	- - - -
County Line	— — — —
Land Hook	— Z —
Original Lot Line/Interior Tract	- - - -

Deed Lot Number	(15)
Parcel or Index Number	Ⓜ
Improvement	○
Railroad	—+—+—+—+—
Scaled Dimension	123s
Deeded Acreage	12.34Ac.
Calculated Area	12.34Ac.(C)

**REVISIONS**

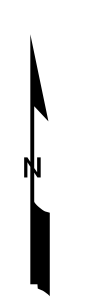

**RESTRICTIONS**

All tax maps created under the provisions of reappraisal legislation are the property of the Assessor of Fayette County, West Virginia and the reproduction, copying, modification, distribution, or sale of such tax maps or any copies thereof without the written permission of the Fayette County Assessor is prohibited by law.

**MAP KEY**

02-16K	02-16L
02-16P	02-16R
02-24B	

STATE OF WEST VIRGINIA  
**FAYETTE COUNTY**  
FAYETTEVILLE, WEST VIRGINIA  
Coordinate System: NAD 1983, WV State Plane South



**PLATEAU DISTRICT MAP 24B**  
Map Date: 9/7/2023  
Scale: 1inch = 100 feet