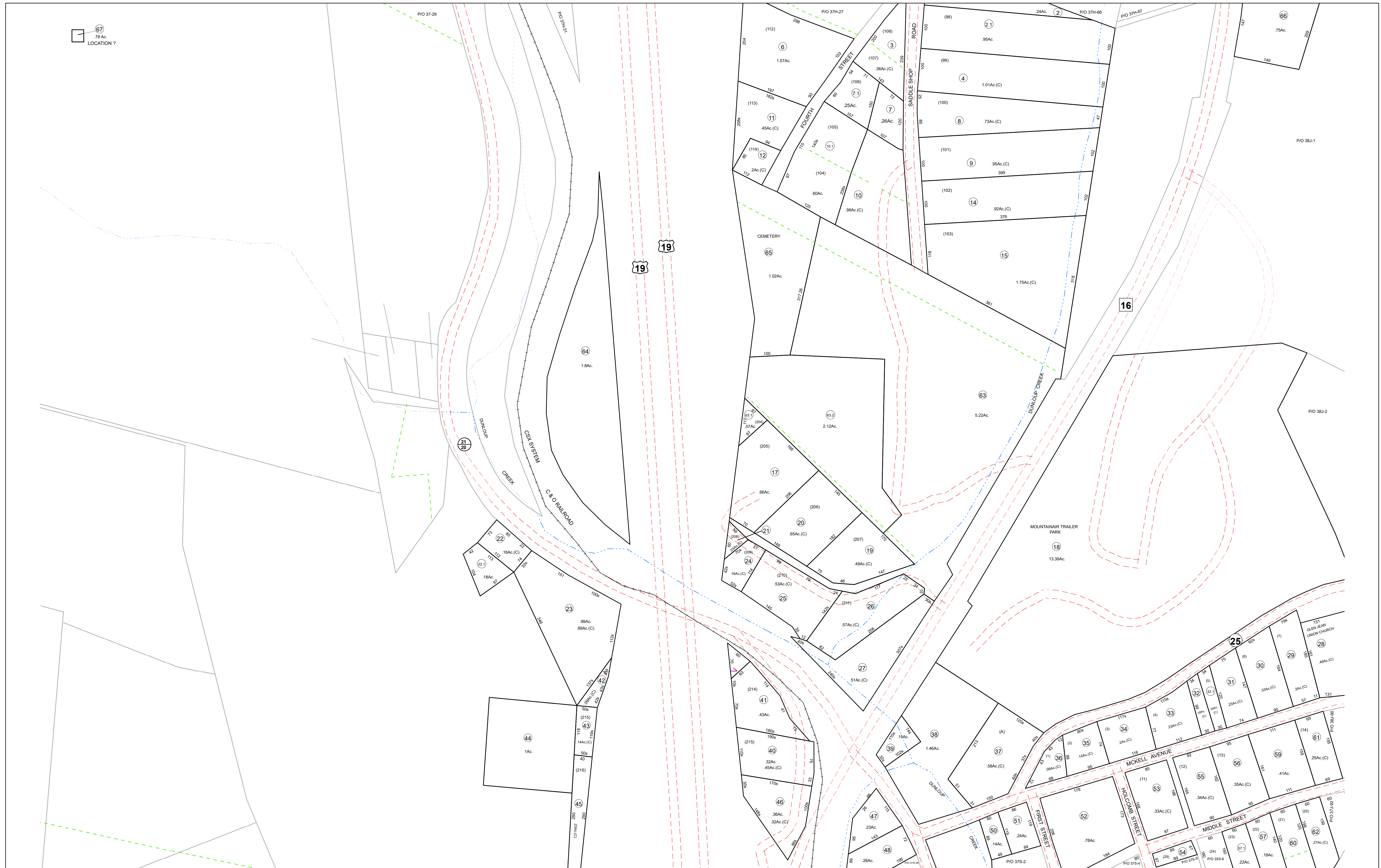


67
78 Ac.
LOCATION ?



Prepared By
The Office Of The
Fayette County Assessor
100 Church Street
Fayetteville, WV 25840
FOR TAX PURPOSES ONLY

DISCLAIMER
This product is for tax purposes only and was not prepared for, nor is it suitable for, legal, engineering, or surveying purposes. Users of this information should review individual parcel records including deeds, survey maps or plats, and legal property descriptions for definitive parcel location information. This map is not a valid survey plat and the data on this map does not imply any official status to such data. The State of West Virginia and county assessor's office assume no liability that might result from the use of this map.

LEGEND	
Property Line	—
Roadway	— — — — —
Water	— — — — —
District/Corporation Line	— — — — —
County Line	— — — — —
Land Hook	— — — — —
Original Lot Line/Interior Tract	— — — — —
Deed Lot Number	(15)
Parcel or Index Number	15
Improvement	—
Railroad	— — — — —
Scaled Dimension	123s
Deeded Acreage	12.34Ac.
Calculated Area	12.34Ac.(C)

REVISIONS	

RESTRICTIONS	

MAP KEY		
02-37G	02-37D	02-38A
02-37G	02-37H	02-38E
	02-37M	02-38J
02-37R	02-37S	02-38N
		02-45D

STATE OF WEST VIRGINIA
FAYETTE COUNTY
FAYETTEVILLE, WEST VIRGINIA
Coordinate System: NAD 1983, WV State Plane South

PLATEAU DISTRICT MAP 37M
Map Date: 11/16/2022
Scale: 1 inch = 100 feet