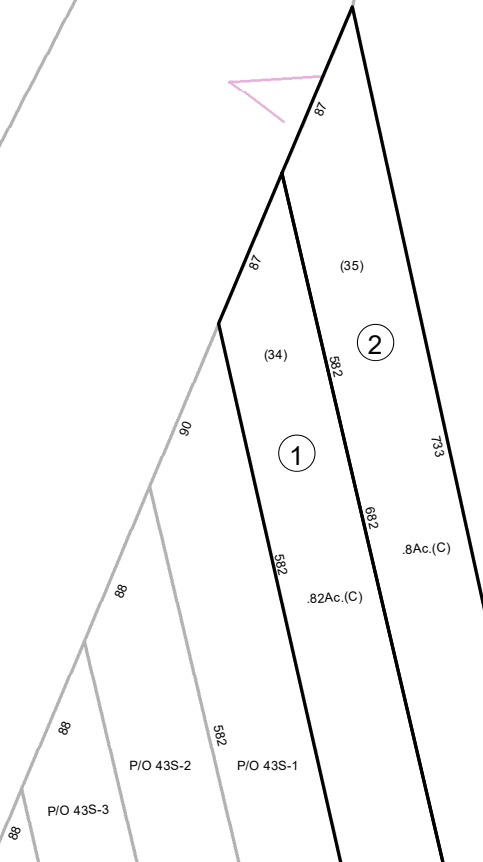


SEE MAP 43



Prepared By
The Office Of The
Fayette County Assessor
100 Church Street
Fayetteville, WV 25840
FOR TAX PURPOSES ONLY

DISCLAIMER
This product is for tax purposes only and was not prepared for, nor is it suitable for, legal, engineering, or surveying purposes. Users of this information should review individual parcel records including deeds, survey maps or plats, and legal property descriptions for definitive parcel location information. This map is not a valid survey plat and the data on this map does not imply any official status to such data. The State of West Virginia and county assessor's office assume no liability that might result from the use of this map.

LEGEND

Property Line	—
Roadway	— — — —
Water	~~~~~
District/Corporation Line	- - - - -
County Line	=====
Land Hook	Z
Original Lot Line/Interior Tract	- · - · -

Deed Lot Number	(15)
Parcel or Index Number	⑮
Improvement	○
Railroad	—+—+—+—
Scaled Dimension	123s
Deeded Acreage	12.34Ac.
Calculated Area	12.34Ac.(C)

REVISIONS

RESTRICTIONS

MAP KEY

02-43M
02-43S
02-51C

STATE OF WEST VIRGINIA
FAYETTE COUNTY
FAYETTEVILLE, WEST VIRGINIA
Coordinate System: NAD 1983, WV State Plane South

PLATEAU DISTRICT MAP 43M
Map Date: 1/17/2023
Scale: 1inch = 100 feet