

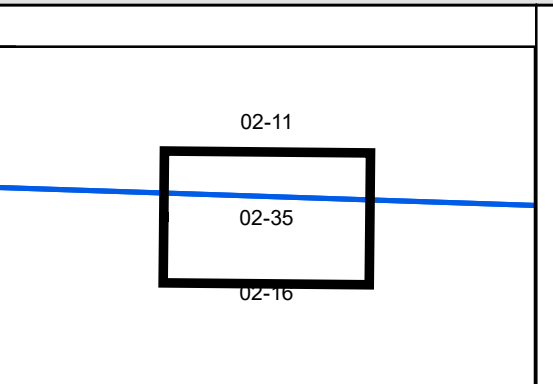
FOR TAX PURPOSES ONLY

Legend	
	District Boundary
	Previous Deed
	Property
	Road Easement
	Railroad Right of Way
	Road Right of Way
	River
	Deed lot Number (15)
	Parcel or Index Number (9)
	Unknown
	Improvement
	Cemetery
	Church
	Educational

Restriction

REPRODUCTION OF TAX MAPS PROHIBITED
 - It is unlawful to copy, photocopy, scan, photograph, or otherwise reproduce this tax map. Pursuant to the provisions of W.Va. CSR § 189-5-5 (2013) no person may reproduce, copy, distribute or sell copies of tax maps prepared by the counties without having first obtained the written permission of the Gilmer County Assessor. In addition to other penalties and civil remedies, any person who, without the written permission of the Gilmer County Assessor, reproduces, copies, distributes, or sells or who allows the reproduction, copying, distribution or sale of tax maps prepared by the Gilmer County Assessor, shall be refused permission by the Gilmer County Assessor or Assessor's agent to purchase tax maps in the future.

Revisions			
1	Revised 12/30/2016	10	28
2	Revised 12/30/2019	11	29
3	Revised 02/17/2021	12	30
4	Revised 03/21/2022	13	31
5	Revised 01/26/2023	14	32
6	Revised 01/16/2024	15	33
7		16	34
8		17	35
9		18	36



Gilmer County
 Assessor's Office
 Melissa Jedamski, Assessor
 Gilmer, WV

DE KALB

District: 02 Map No: 35
 Date of Publication: 3/14/2024
 Scale: 1" = 200'