

FOR TAX PURPOSES ONLY

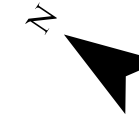
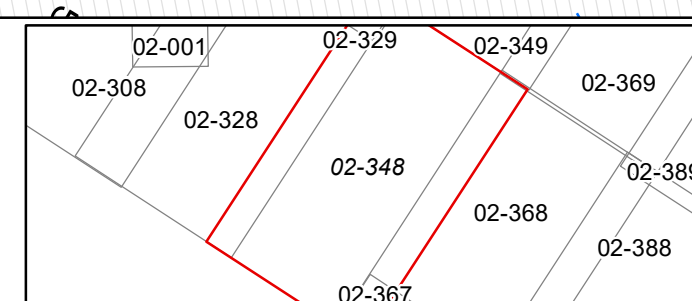
Prepared By:
Ralph Layton
 Grant County Assessor

Legend

Property Line	—	Original Lot Line	—
Road Right of Way	—	Lot Number (15)	—
Corporation Line	—	Parcel Number (99)	—
District Line	—	Water	—
County Line	—	Railroad	—

R	1	Revised 10/1/16	9	17
V	2	Revised 01/28/2022	10	18
I	3	Revised 01/18/2024	11	19
S	4		12	20
I	5		13	21
N	6		14	22
O	7		15	23
S	8		16	24

STATE OF WEST VIRGINIA
COUNTY OF GRANT
 Office of Assessor



GRANT
 Map: 348
 Date, Aerial Photography: 2015
 Date, Map: 1/26/2024
 Scale: 1" = 400'