

FOR TAX PURPOSES ONLY

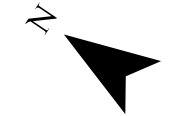
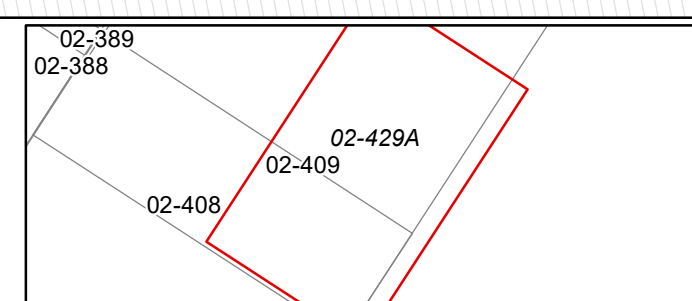
Prepared By:  
**Ralph Layton**  
 Grant County Assessor

**Legend**

Property Line	—	Original Lot Line	—
Road Right of Way	—	Lot Number	(15)
Corporation Line	—	Parcel Number	(99)
District Line	—	Water	—
County Line	—	Railroad	—

R	1	Revised 10/1/16	9	17
e	2	Revised 01/26/2022	10	18
v	3	Revised 01/16/2024	11	19
i	4		12	20
s	5		13	21
t	6		14	22
n	7		15	23
s	8		16	24

**STATE OF WEST VIRGINIA**  
**COUNTY OF GRANT**  
 Office of Assessor



**GRANT**  
 Map: 429A  
 Date, Aerial Photography: 2015  
 Date, Map: 1/26/2024  
 Scale: 1" = 200'