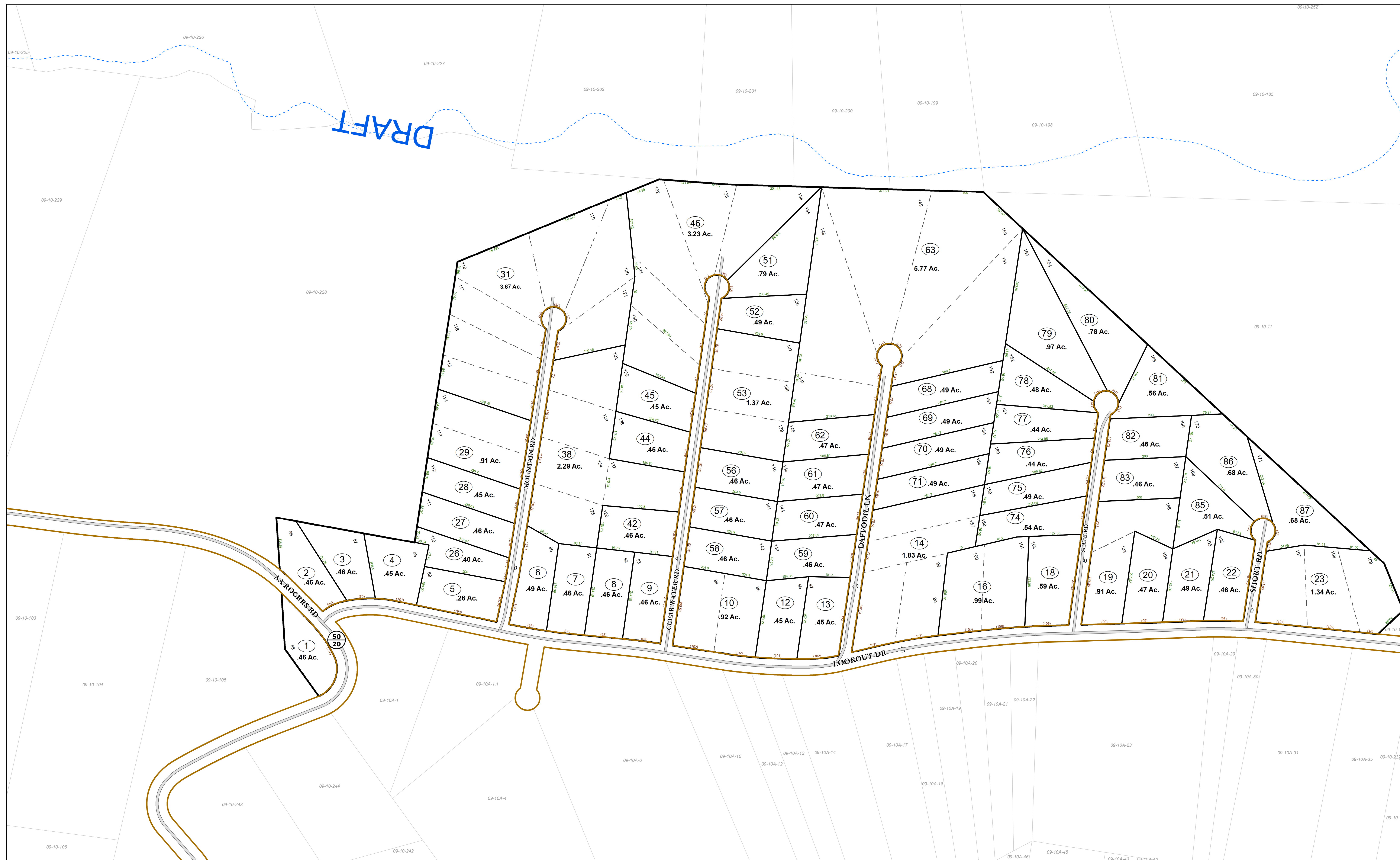
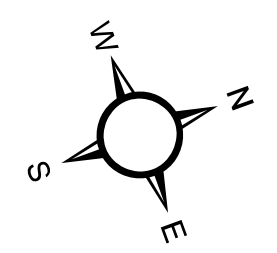


DRAFT



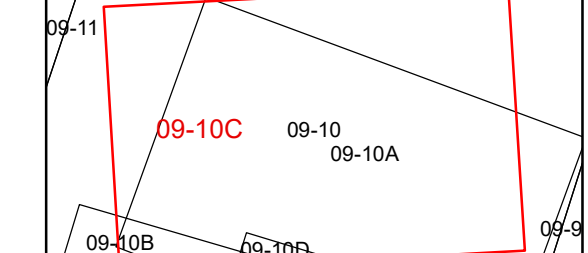
WV LEGISLATIVE REGULATION TITLE 189 SERIES 2009
Disclaimer: This tax map was compiled for purposes of taxation from available record evidence and has not been field verified.
Restrictions: All finished tax maps created under the provisions of legislation are the property of the county assessors who created them and the reproduction, copying, distribution, sale, or lease of such tax maps or copies thereof without the written permission of the respective county assessors is prohibited by law.



Legend table with symbols for Corporation line, District line, County line, State line, Property Line, Right of Way, Railroad, Lot line, Road Centerline, Streams, Trans Line, Cemetery, School, Church, Deed lot number, Parcel or index number, Parcel acreage.

Revisions table listing dates and assessors: 1 AS OF JULY 1 1996 KWS, 2 AS OF JULY 1 1997 KWS, 3 AS OF JULY 1 1998 JVB, 4 AS OF JULY 1 1999 JVB, 5 AS OF JULY 1 2000 JVB, 6 AS OF JULY 1 2001 JVB, 7 AS OF JULY 1 2002 JVB, 8 AS OF JULY 1 2003 JVB, 9 AS OF JULY 1 2004 JVB, 10 AS OF JULY 1 2005 JVB, 11 AS OF JULY 1 2007 JVB, 12 AS OF JULY 1 2008 RIR, 13 AS OF JULY 1 2011 ASC, 14 AS OF MAR 29 2012 ASC, 15 AS OF JAN 1 2013 ASC, 16 AS OF JAN 1 2014 ASC, 17 AS OF JAN 1 2015 ASC, 18 AS OF JAN 31 2019 AGD, 19 AS OF JAN 31 2020 AGD, 20 AS OF JAN 31 2022 AGD, 21 AS OF JAN 18 2024 AGD.

STATE OF WEST VIRGINIA
COUNTY OF HAMPSHIRE
Office of Assessor



Sherman
Map: 10C
Created: 1/19/2024
Scale: 1 in = 100 ft