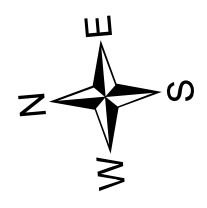
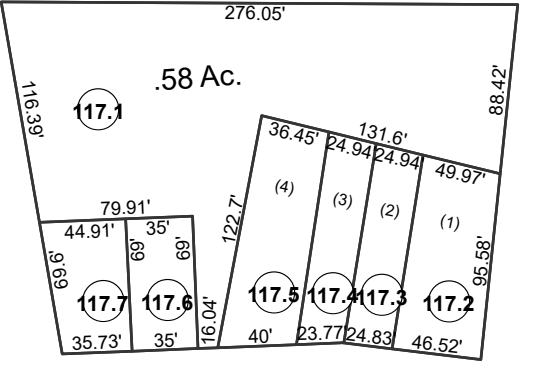


INTERSTATE 79 FWY
INTERSTATE 79 FWY

See Map
01-0348

See Map
02-0206

See Map
15-0328



FOR TAX PURPOSES ONLY
 Prepared By:
Joseph R. Romano
 Harrison County Assessor

Legend	
Property Line	—————
Edge of pavement or roadway	- - - - -
Corporation line	- · - · -
District line	- - - - -
County Line	- - - - -

Original Lot Line	—————
Deed lot number (in parenthesis)	(15)
Parcel or index number	○
Improvement	○
Railroad	—————
Water	—————

Restriction	
Latest Revision	5/28/2013 2:46:33 PM

All tax maps created under the provisions of reappraisal legislation are the property of the Assessor of Harrison County, West Virginia and the reproduction, copying, modification, distribution or sale of such tax maps or any copies thereof without the written permission of the Harrison County Assessor is prohibited by law.



HARRISON COUNTY - WEST VIRGINIA
 Office of Assessor

District: Clark Stonewood
 Map No: 02-0206
 Date: January 1, 2024
 Scale: 1:1,200

02-0206