

INTERSTATE 79 RAMP

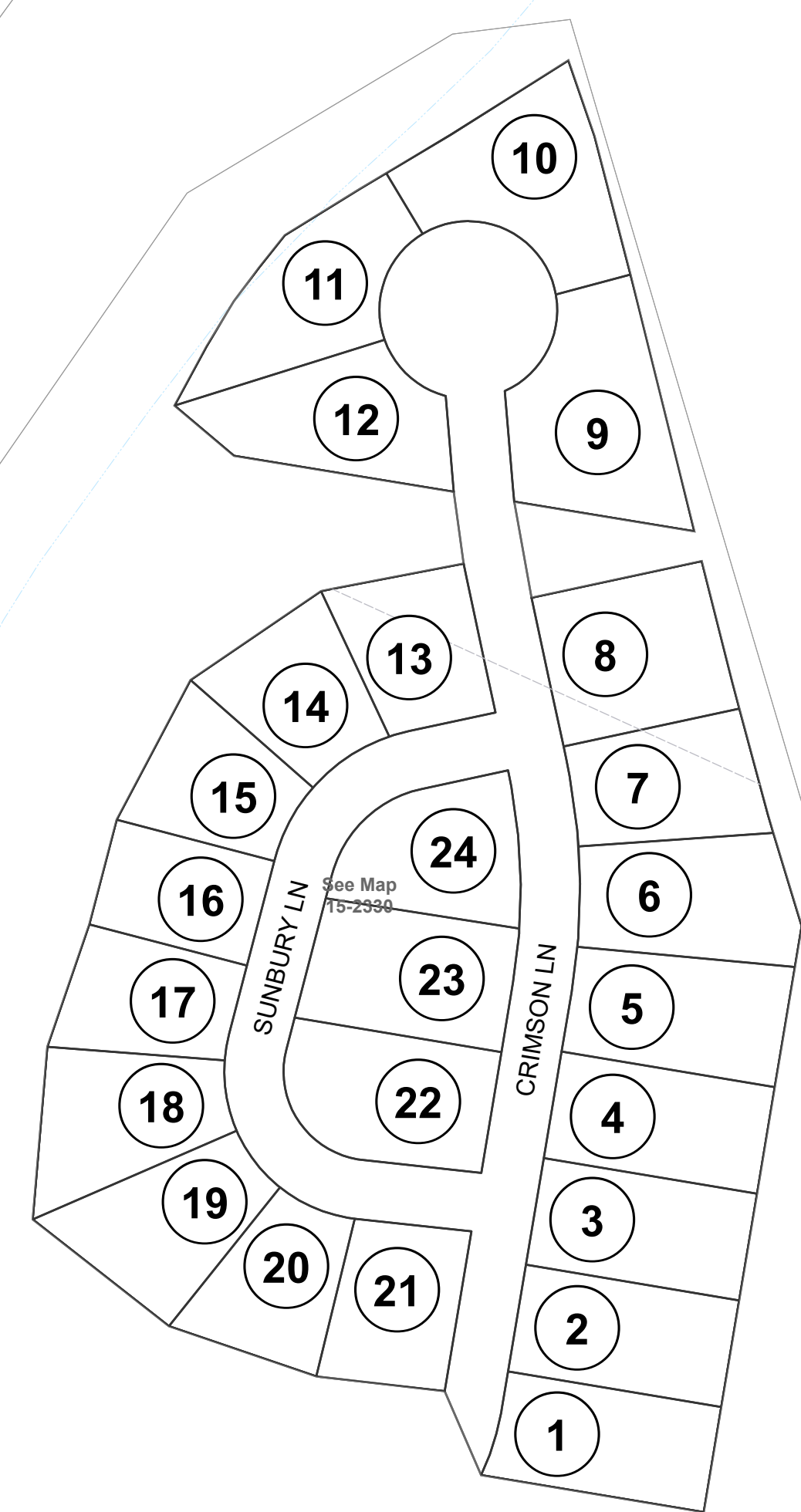
JOY LN

HILL RUN RD

BENEDUM DR

THREE GUYS DR

BLOOMFIELD LN



See Map 15-0250

See Map 15-0270

See Map 15-0270

See Map 15-0270



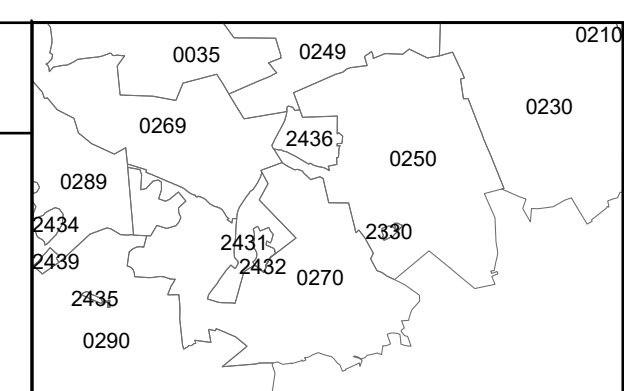
FOR TAX PURPOSES ONLY
 Prepared By:
Joseph R. Romano
 Harrison County Assessor

Legend	
Property Line	—————
Edge of pavement or roadway	- - - - -
Corporation line	· · · · ·
District line	· · · · ·
County Line	· · · · ·

Original Lot Line	—————
Deed lot number (in parenthesis)	(15)
Parcel or index number	15
Improvement	○
Railroad	—————
Water	~~~~~

Restriction	
Latest Revision	5/28/2013 2:46:33 PM

All tax maps created under the provisions of reappraisal legislation are the property of the Assessor of Harrison County, West Virginia and the reproduction, copying, modification, distribution or sale of such tax maps or any copies thereof without the written permission of the Harrison County Assessor is prohibited by law.



HARRISON COUNTY - WEST VIRGINIA
 Office of Assessor

District: Simpson District
 Map No: 15-2330
 Date: January 1, 2024
 Scale: 1:1,200

15-2330