



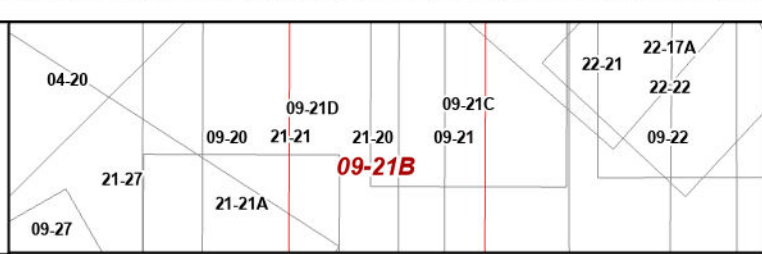
THIS DOCUMENT IS A TAX MAP: It was compiled for purposes of taxation from available record evidence and has not been field verified. It is not a valid survey plat. The existence of data on this map does not imply any "official" status to such data. The WV State Tax Dept. and the Marion County Assessor's Office assume no liability that might result from the use of this document.

REVISION HISTORY		
1	OCT. 2016 NEW MAP TN	6
2	OCT. 2018 NEW MAP TN	7
3	OCT. 2019 NEW MAP TN	8
4	OCT. 2021 NEW MAP TN	9
5	NOV. 2022 NEW MAP AGD	10
	JAN. 2024 NEW MAP AGD	11
		12
		13
		14
		15

Legend			
Property Line	—	County Line	—
Road Right of Way	—	Original Lot Line	—
Corporation Line	—	Lot Number (15)	—
District Line	—	Parcel Number 99	—
		Water	—
		Railroad	—

OFFICE OF THE MARION COUNTY ASSESSOR

All tax maps created under the provisions of reappraisal legislation are the property of Marion County. Reappraisal Program and the reproduction, copying, distribution or sale of such maps or any copies thereof without the written permission of the Marion County Assessor is prohibited by law. 03-14



GRANT DISTRICT
Map: 09-21B
Date of Map: 1/29/2024

1:1,200