

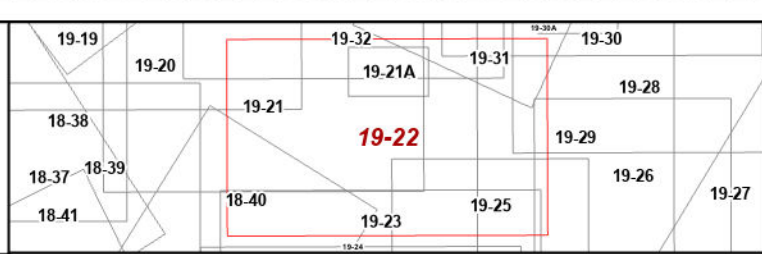
THIS DOCUMENT IS A TAX MAP: It was compiled for purposes of taxation from available record evidence and has not been field verified. It is not a valid survey plat. The existence of data on this map does not imply any "official" status to such data. The WV State Tax Dept. and the Marion County Assessor's Office assume no liability that might result from the use of this document.

REVISION HISTORY					
1	OCT. 2016	NEW MAP TN	6	JAN. 2024	NEW MAP AGD
2	OCT. 2018	NEW MAP TN	7		
3	OCT. 2019	NEW MAP TN	8		
4	OCT. 2021	NEW MAP TN	9		
5	NOV. 2022	NEW MAP AGD	10		

Legend			
Property Line	County Line	Parcel Number	99
Road Right of Way	Original Lot Line	Water	(15)
Corporation Line	Lot Number	Railroad	
District Line			

**OFFICE OF THE
MARION COUNTY ASSESSOR**

All tax maps created under the provisions of reappraisal legislation are the property of Marion County. Reappraisal Program and the reproduction, copying, distribution or sale of such maps or any copies thereof without the written permission of the Marion County Assessor is prohibited by law. 03-14



WINFIELD DISTRICT
Map: 19-22
Date of Map: 1/29/2024

1:4,800