



FOR TAX PURPOSES ONLY

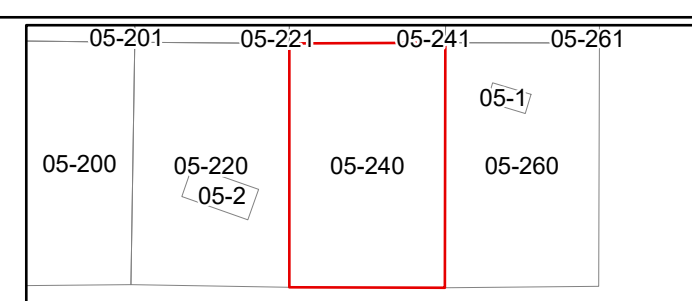
Prepared By:
Ramona Mahon
 Mingo County Assessor

Legend

Property Line	—	Original Lot Line	---
Road Right of Way	—	Lot Number	(15)
Corporation Line	—	Parcel Number	(99)
District Line	—	Water	---
County Line	—	Railroad	---

R	1	Revised 1/1/18	9	17
O	2	Revised 1/31/2022	10	18
V	3	Revised 3/24/2024	11	19
I	4		12	20
S	5		13	21
I	6		14	22
O	7		15	23
N	8		16	24

STATE OF WEST VIRGINIA
COUNTY OF MINGO
 Office of Assessor



KERMIT
 Map: 240
 Date, Aerial Photography: 2003
 Date, Map: 3/26/2024
 Scale: 1" = 400'