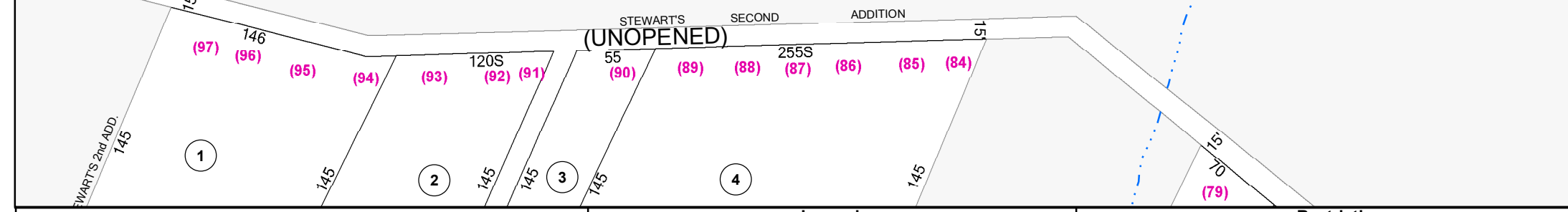


SEE MAP 47



	<p>FOR TAX PURPOSES ONLY</p> <p>LANDMARK geospatial</p> <p><small>A Division of Landmark Forestry LLC</small></p>	<p>Legend</p> <ul style="list-style-type: none"> District Boundary Previous Deed Property Road Easement Railroad Right of Way Road Right of Way River 	<p>Restriction</p> <p>REPRODUCTION OF TAX MAPS PROHIBITED - It is unlawful to copy, photocopy, scan, photograph, or otherwise reproduce this tax map. Pursuant to the provisions of W Va. CSR § 189-5-5 (2013) no person may reproduce, copy, distribute or sell copies of tax maps prepared by the counties without having first obtained the written permission of the Nicholas County Assessor. In addition to other penalties and civil remedies, any person who, without the written permission of the Nicholas County Assessor, reproduces, copies, distributes, or sells or who allows the reproduction, copying, distribution or sale of tax maps prepared by the Nicholas County Assessor, shall be refused permission by the Nicholas County Assessor or Assessor's agent to purchase tax maps in the future.</p>	<p>1 LANDMARK 5/2014</p>	10	19	28	05-23	01-43	01-44		<p>NICHOLAS COUNTY</p> <p>Assessor's Office</p> <p>SUMMERSVILLE, WV</p>	<p>BEAVER</p> <p>District 01 Map No. 47D</p> <p>Date of Publication: 11/21/2024</p> <p>Scale: 1"=100'</p>
				<p>2</p>	11	20	29	01-47C	01-47D	06-3			
3	12	21	30	05-30	1-47	05-31	01-48						
4	13	22	31										
5	14	23	32										
6	15	24	33										
7	16	25	34										
8	17	26	35										
9	18	27	36										