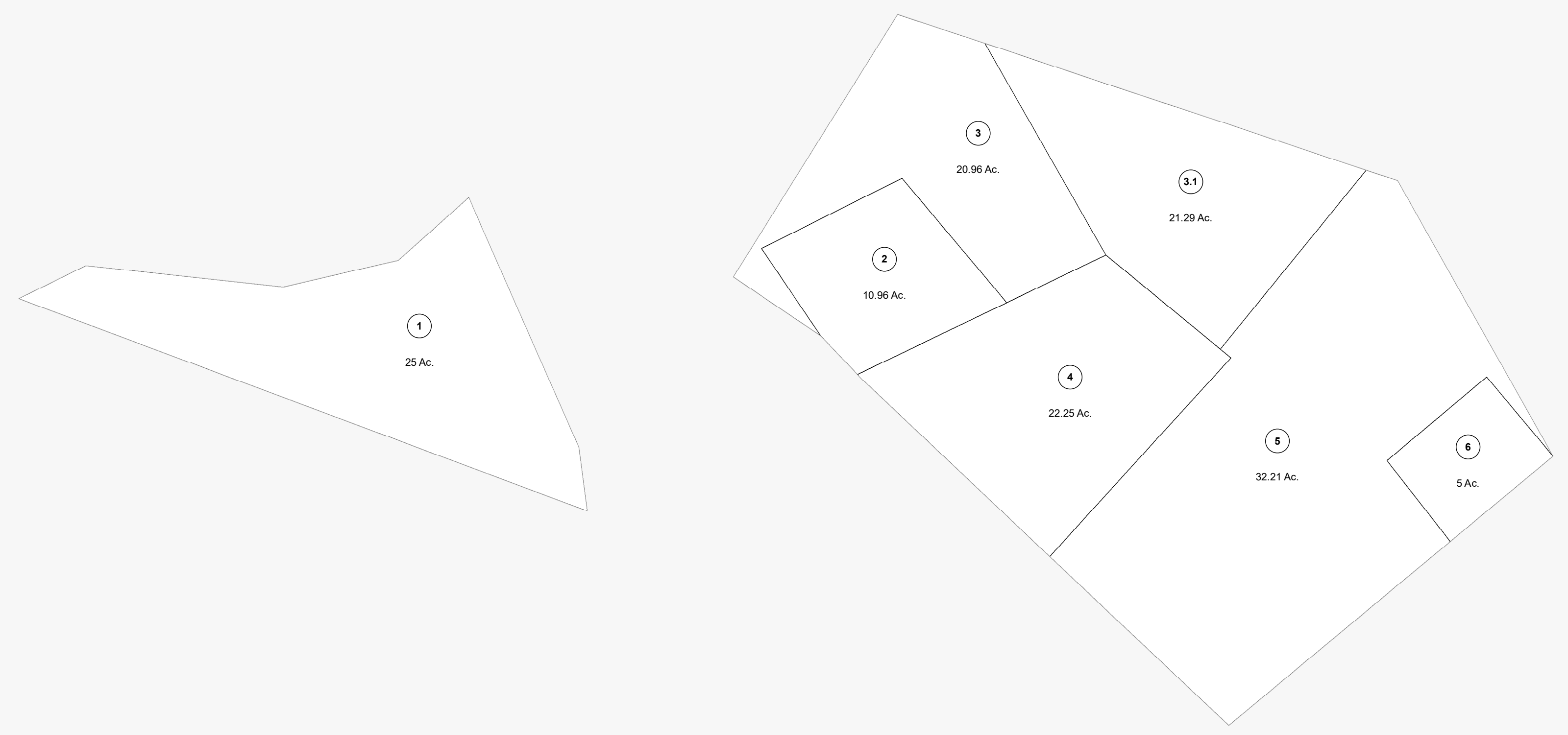


LIBERTYBOWL

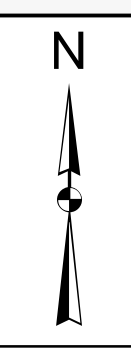
BRANCH



Part of parcel 2, map 9

BEECH

FORK



FOR TAX PURPOSES ONLY
LANDMARK
 geospatial
 A Division of Landmark Forestry LLC

Legend

--- District Boundary
- - - Previous Deed
--- Property
- - - Road Easement
--- Railroad Right of Way
--- Road Right of Way
--- River

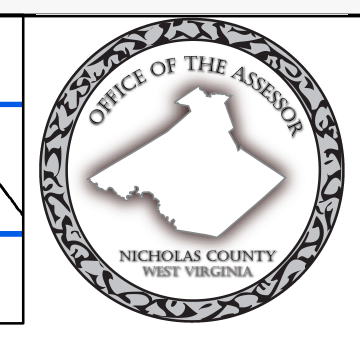
Deed lot Number	(19)
Parcel or Index Number	(9)
Unknown	☐
Improvement	○
Cemetery	(f)
Church	⚡
Educational	⚡

Restriction

REPRODUCTION OF TAX MAPS PROHIBITED
 - It is unlawful to copy, photocopy, scan, photograph, or otherwise reproduce this tax map. Pursuant to the provisions of W.Va. CSR § 189-5-5 (2013) no person may reproduce, copy, distribute or sell copies of tax maps prepared by the counties without having first obtained the written permission of the Nicholas County Assessor. In addition to other penalties and civil remedies, any person who, without the written permission of the Nicholas County Assessor, reproduces, copies, distributes, or sells or who allows the reproduction, copying, distribution or sale of tax maps prepared by the Nicholas County Assessor, shall be refused permission by the Nicholas County Assessor or Assessor's agent to purchase tax maps in the future.

1	10	19	28
2	11	20	29
3	12	21	30
4	13	22	31
5	14	23	32
6	15	24	33
7	16	25	34
8	17	26	35
9	18	27	36

07-2	07-3	03-41
02-2	07-6	03-46
07-5	07-7	
02-5	07-9	07-10



NICHOLAS COUNTY
 Assessor's Office
 SUMMERSVILLE, WV

SUMMERSVILLE
 District 07 Map No. 6
 Date of Publication: 11/1/2023
 Scale: 1"=400'