

PART OF
PARCEL 1, MAP 23

P/O 24-4

1.1
639.36 Ac.

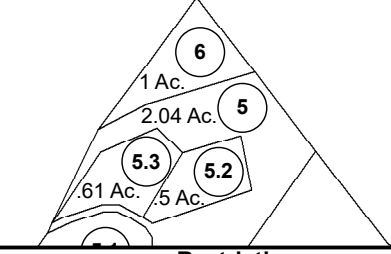
1
1697.429 Ac.
(G-43A)

10
1.5 Ac.

12
2.75 Ac.

13
3.75 Ac.

P/O 13-2



P/O 13-12.1

P/O 13-12.2

P/O 13-25.4

8
7.33 Ac.

9
7.46 Ac.

4
28.24 Ac.

2
26.25 Ac.

21
18.264 Ac.



FOR TAX PURPOSES ONLY
LANDMARK
geospatial
A Division of Landmark Forestry LLC

Legend

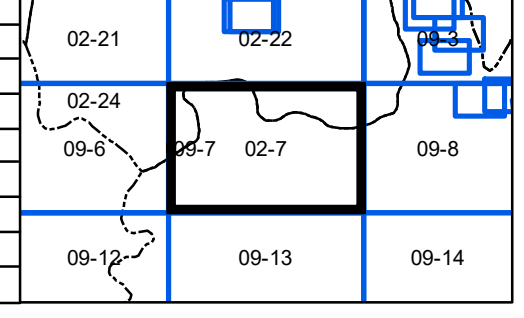
	District Boundary
	Previous Deed
	Property
	Road Easement
	Railroad Right of Way
	Road Right of Way
	River

	Deed lot Number	(15)
	Parcel or Index Number	(9)
	Unknown	
	Improvement	
	Cemetery	
	Church	
	Educational	

Restriction

REPRODUCTION OF TAX MAPS PROHIBITED - It is unlawful to copy, photocopy, scan, photograph, or otherwise reproduce this tax map. Pursuant to the provisions of W.Va. CSR § 189-5-5 (2013) no person may reproduce, copy, distribute or sell copies of tax maps prepared by the counties without having first obtained the written permission of the Nicholas County Assessor. In addition to other penalties and civil remedies, any person who, without the written permission of the Nicholas County Assessor, reproduces, copies, distributes, or sells or who allows the reproduction, copying, distribution or sale of tax maps prepared by the Nicholas County Assessor, shall be refused permission by the Nicholas County Assessor or Assessor's agent to purchase tax maps in the future.

1	10	19	28
2	11	20	29
3	12	21	30
4	13	22	31
5	14	23	32
6	15	24	33
7	16	25	34
8	17	26	35
9	18	27	36



NICHOLAS COUNTY WILDERNESS
Assessor's Office
SUMMERSVILLE, WV

District 09 Map No. 7
Date of Publication: 11/1/2023
Scale: 1"=400'