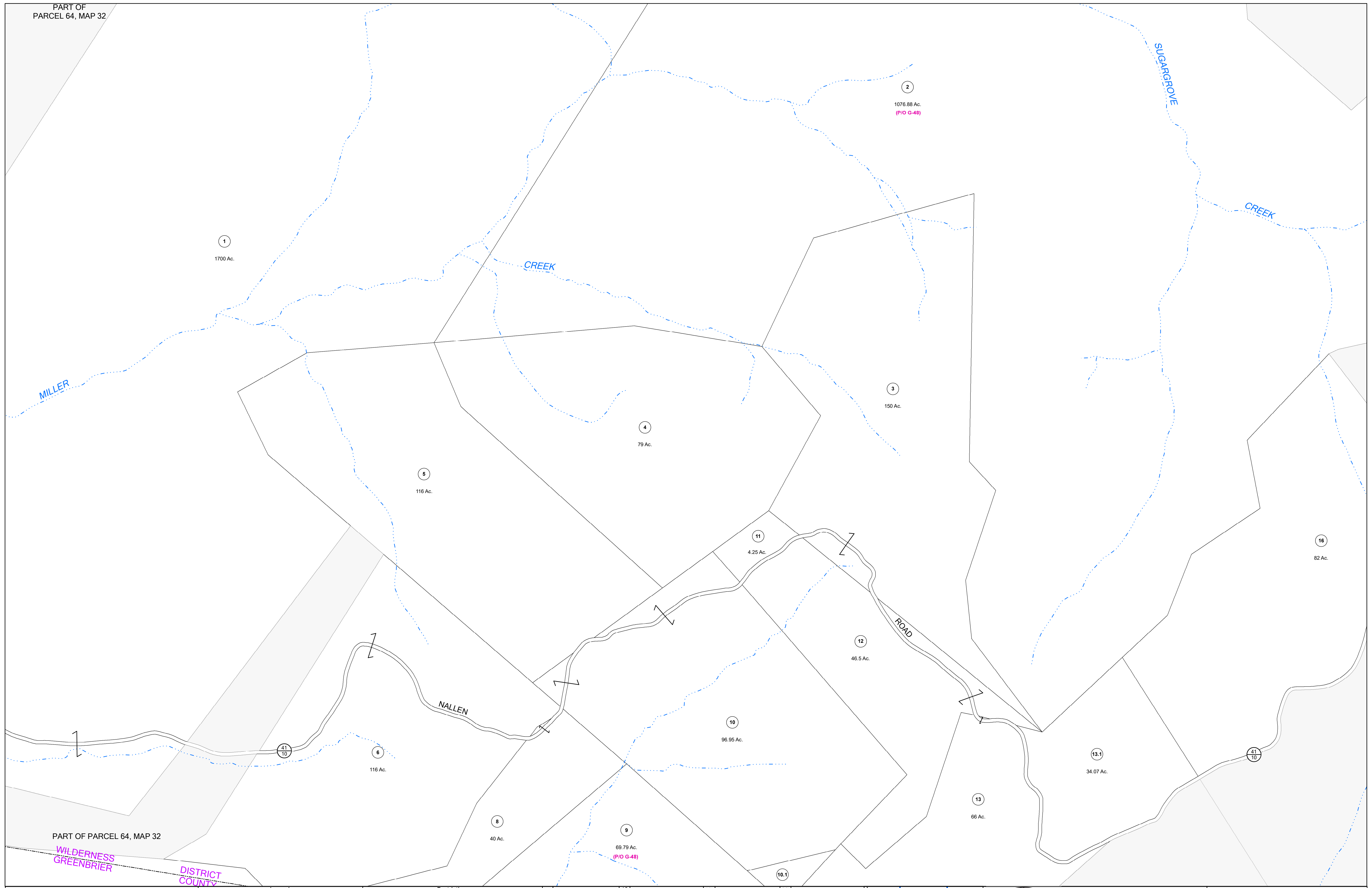
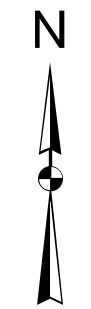


PART OF  
PARCEL 64, MAP 32



PART OF PARCEL 64, MAP 32

WILDERNESS  
GREENBRIER  
DISTRICT  
COUNTY



**FOR TAX  
PURPOSES ONLY**  
**LANDMARK**  
**geospatial**  
A Division of Landmark Forestry LLC

**Legend**

	District Boundary
	Previous Deed
	Property
	Road Easement
	Railroad Right of Way
	Road Right of Way
	River

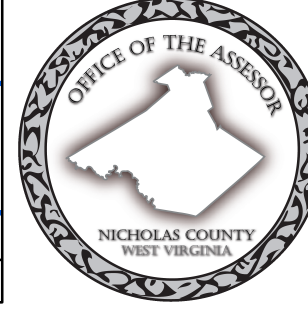
	Deed lot Number
	Parcel or Index Number
	Unknown
	Improvement
	Cemetery
	Church
	Educational

**Restriction**

REPRODUCTION OF TAX MAPS PROHIBITED  
- It is unlawful to copy, photocopy, scan, photograph, or otherwise reproduce this tax map. Pursuant to the provisions of W.Va. CSR § 189-5-5 (2013) no person may reproduce, copy, distribute or sell copies of tax maps prepared by the counties without having first obtained the written permission of the Nicholas County Assessor. In addition to other penalties and civil remedies, any person who, without the written permission of the Nicholas County Assessor, reproduces, copies, distributes, or sells or who allows the reproduction, copying, distribution or sale of tax maps prepared by the Nicholas County Assessor, shall be refused permission by the Nicholas County Assessor or Assessor's agent to purchase tax maps in the future.

1	10	19	28
2	11	20	29
3	12	21	30
4	13	22	31
5	14	23	32
6	15	24	33
7	16	25	34
8	17	26	35
9	18	27	36

09-27	09-28	09-29
09-30	09-31	09-32
09-33	09-34	09-35
09-36	09-37	09-38



**NICHOLAS COUNTY**  
Assessor's Office  
SUMMERSVILLE, WV

**WILDERNESS**  
District 09 Map No. 33  
Date of Publication: 11/1/2023  
Scale: 1"=400'