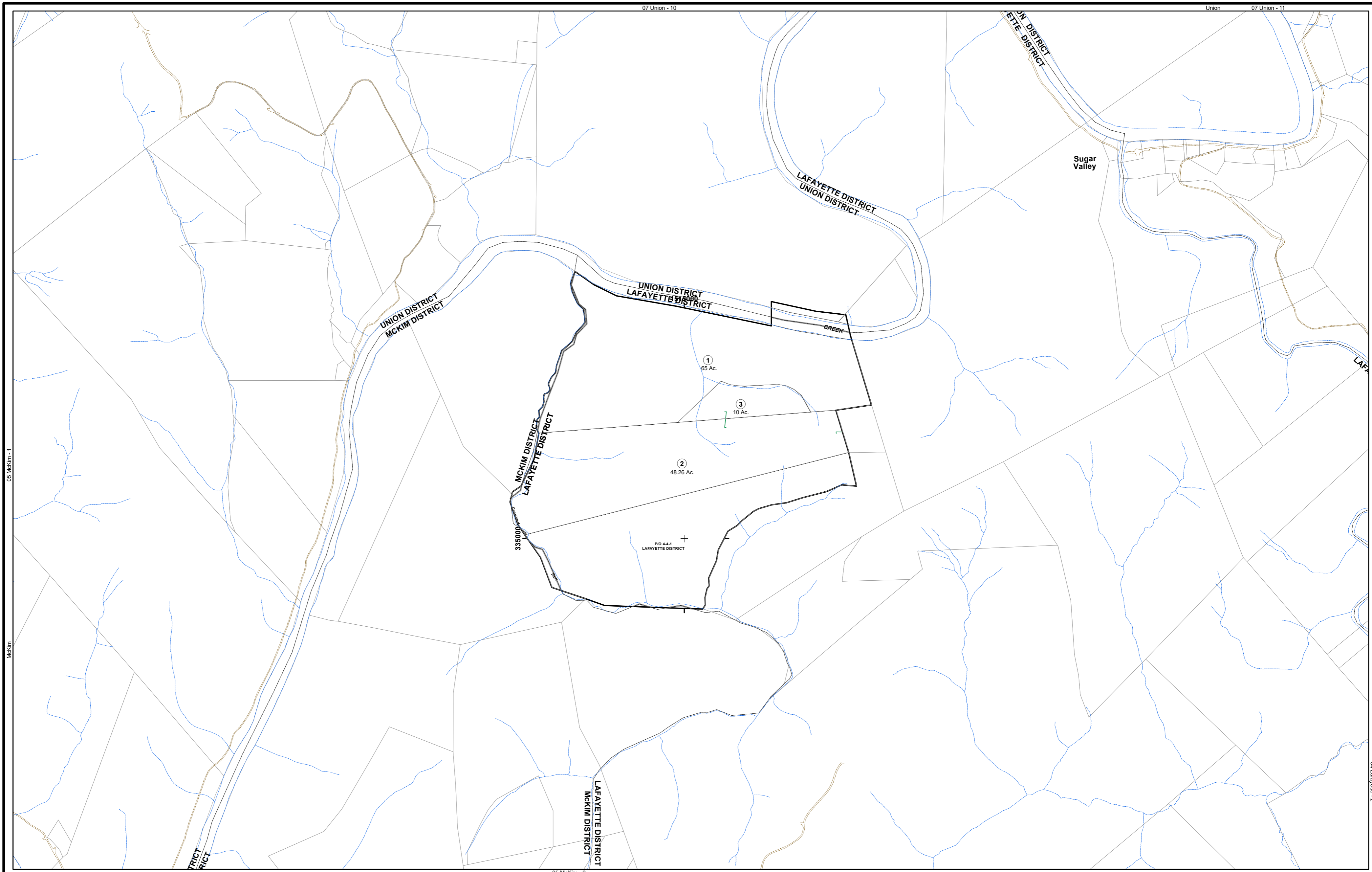


04 Lafayette - 1



05 McKim - 1

05 McKim - 3



FOR TAX PURPOSES ONLY

Prepared By:  
**Vickie Gorrell**  
 Pleasants County Assessor

Legend

Property Line	—————	Original Lot Line	-----
Edge of pavement or roadway	- - - - -	Deed lot number (in parenthesis)	(15)
Corporation line	- · - · -	Parcel or index number	Ⓜ
District line	- · - · -	Improvement	○
County Line	- - - - -	Railroad	+

Restriction

\*All finished tax maps created under the provisions of legislation are the property of the county assessor who created them and the reproduction, copying, distribution, sale, or lease of such tax maps or copies thereof without the written permission of the Pleasants County Assessor is prohibited by law. The State Department of Revenue is hereby designated as an agent for all counties for the purpose of sale, reproduction and distribution of the tax maps.

Key Map

U-10	U-11	U-11
M-1	1	2
M-3	3	4

PLEASANTS COUNTY - WEST VIRGINIA  
 Office of Assessor

District: 04 Lafayette  
 Map No: 1  
 Drawn By: Benjamin T Sweeney  
 Date: February 1, 2024  
 Scale: 1 inch = 615 feet