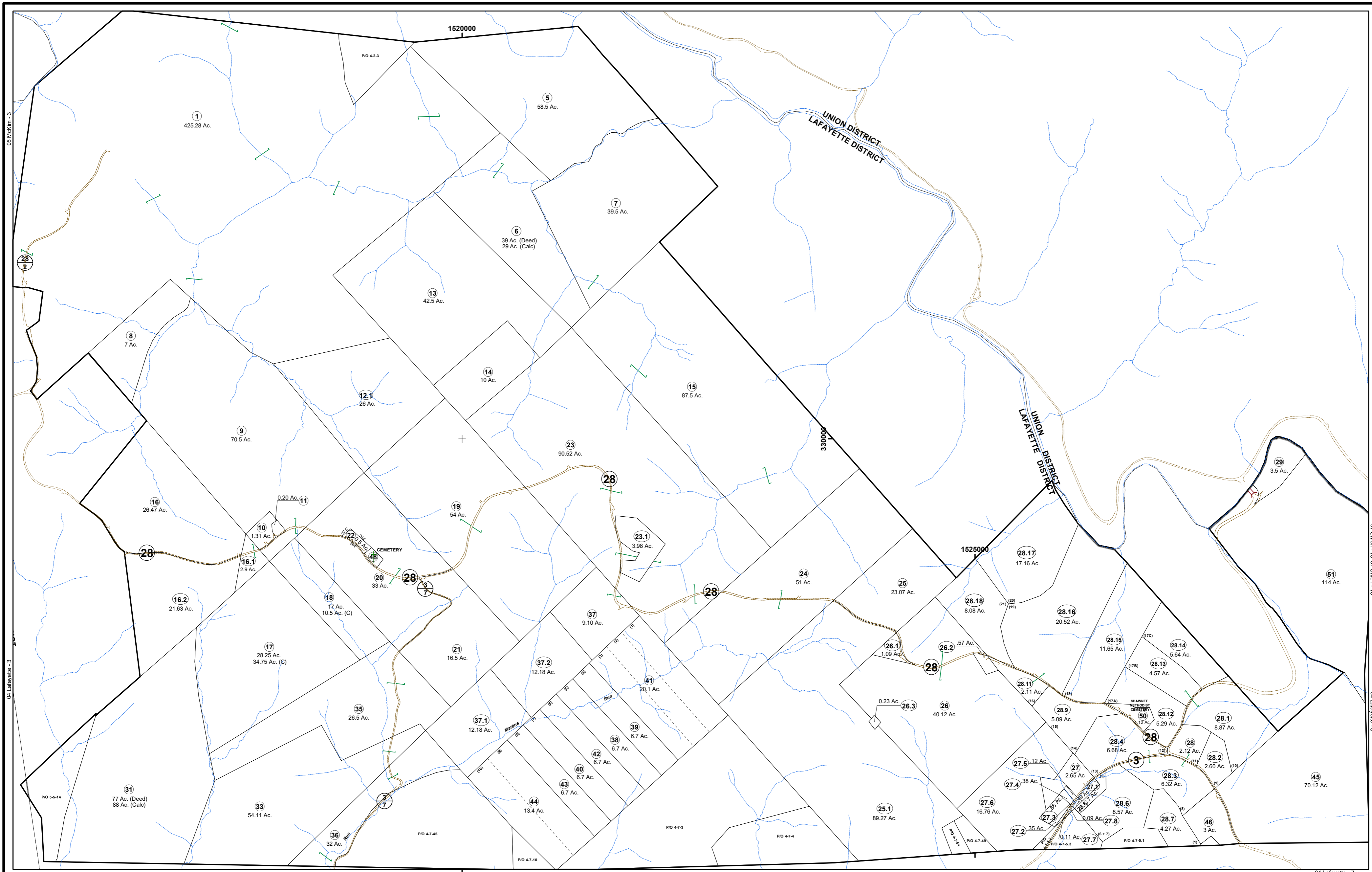


04 Lafayette - 4



04 Lafayette - 7



FOR TAX PURPOSES ONLY
 Prepared By:
Vickie Gorrell
 Pleasants County Assessor

Legend	
Property Line	—
Edge of pavement or roadway	- - - - -
Corporation line	- · - · - · -
District line	- - - - -
County Line	- · - · - · -
Original Lot Line	—
Deed lot number (in parenthesis)	(15)
Parcel or index number	15
Improvement	○
Railroad	—+—+—+—

Restriction
 *All finished tax maps created under the provisions of legislation are the property of the county assessor who created them and the reproduction, copying, distribution, sale, or lease of such tax maps or copies thereof without the written permission of the Pleasants County Assessor is prohibited by law. The State Department of Revenue is hereby designated as an agent for all counties for the purpose of sale, reproduction and distribution of the tax maps.

Key Map		
1	2	U-15
3	4	5
6	7	8

PLEASANTS COUNTY - WEST VIRGINIA
 Office of Assessor

District: **04 Lafayette**
 Map No: **4**
 Drawn By: **Benjamin T Sweeney**
 Date: **February 1, 2024**
 Scale: **1 inch = 615 feet**